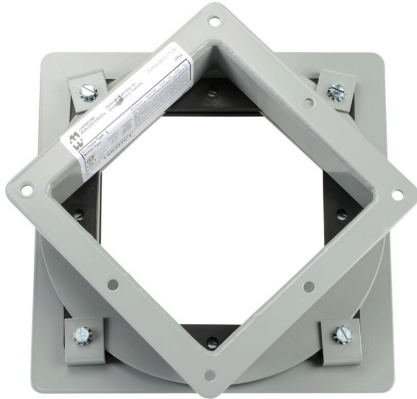


1485DV1 Cut Sheet



Hammond pull-through wireway fitting, box entry swivel nipple, 6 x 6 x 2.25in, carbon steel, ANSI 61 gray, NEMA 12.

For complete product information, please see this item on our store at the following link:



<https://www.automationdirect.com/pn/1485DV1>

Technical Specifications

Brand	Hammond
Item	Wireway fitting
Fitting Type	Box entry swivel nipple
Wireway Type	Pull-through
Size	6 x 6 x 2.25in
Material	Carbon steel
Color	ANSI 61 gray
Finish	Powder coat
NEMA Rating	12
IP Rating	IP54
Includes	(1) angle sealing plate

Agency Approvals

UL Listed File #	E186830
UL Recognized File #	None
UL Hazardous File #	None
CSA File #	LL21312
RoHS Status	Meets RoHS Chemical Restrictions - No CE (See RoHS Statement Below)
EU REACH	View EU REACH document
Other	RoHS Statement