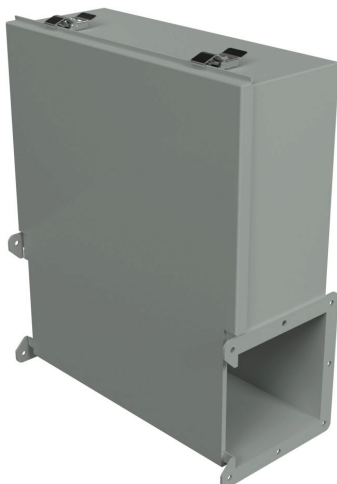


# 1485DJ Cut Sheet



Hammond lay-in wireway fitting, junction box, 16 x 17.87 x 6in, carbon steel, ANSI 61 gray, powder coat finish, quick-release clamps, NEMA 12. For use with 1485 series wireway.

For complete product information, please see this item on our store at the following link:



<https://www.automationdirect.com/pn/1485DJ>

## Technical Specifications

<b>Brand</b>	Hammond
<b>Item</b>	Wireway fitting
<b>Fitting Type</b>	Junction box
<b>Wireway Type</b>	Lay-in
<b>Size</b>	16 x 17.87 x 6in
<b>Material</b>	Carbon steel
<b>Color</b>	ANSI 61 gray
<b>Finish</b>	Powder coat

<b>Cover Type</b>	Hinged
<b>Latch Type</b>	Quick-release clamps
<b>Knockouts</b>	No
<b>NEMA Rating</b>	12
<b>IP Rating</b>	IP54
<b>Includes</b>	(1) snap-on flat sealing plate and (1) subpanel
<b>For Use With</b>	1485 series wireway

## Agency Approvals

<b>UL Listed File #</b>	E186830
<b>UL Recognized File #</b>	None
<b>UL Hazardous File #</b>	None
<b>CSA File #</b>	LL21312
<b>RoHS Status</b>	Meets RoHS Chemical Restrictions - No CE (See RoHS Statement Below)
<b>EU REACH</b>	<a href="#">View EU REACH document</a>
<b>Other</b>	<a href="#">RoHS Statement</a>

## Dimensional Drawings



2D Drawing PDF Link:  
<https://cdn.automationdirect.com/static/drawings/1485DJ.pdf>  
See store item page for other formats.