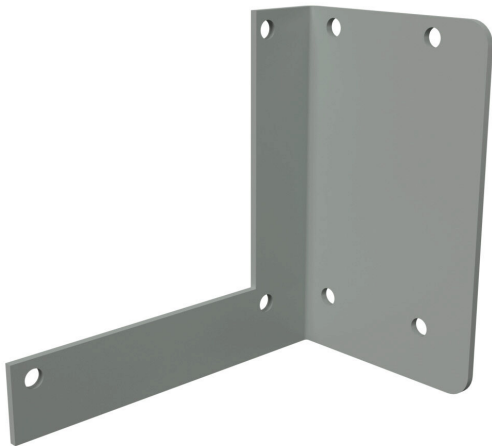


1485CL2 Cut Sheet



Hammond wall hanger, 4 x 4in, carbon steel, ANSI 61 gray, powder coat finish. For use with 1485 and 1487 series wireway.

For complete product information, please see this item on our store at the following link:



<https://www.automationdirect.com/pn/1485CL2>

Technical Specifications

Brand	Hammond
Item	Hanger
Hanger Type	Wall
Size	4 x 4in
Material	Carbon steel
Color	ANSI 61 gray
Finish	Powder coat
For Use With	1485 and 1487 series wireway

Agency Approvals

UL Listed File #	None
UL Recognized File #	None
UL Hazardous File #	None
CSA File #	None
RoHS Status	Meets RoHS Chemical Restrictions - No CE (See RoHS Statement Below)
EU REACH	View EU REACH document
Other	RoHS Statement

Dimensional Drawings



2D Drawing PDF Link:
<https://cdn.automationdirect.com/static/drawings/1485CL2.pdf>
See store item page for other formats.