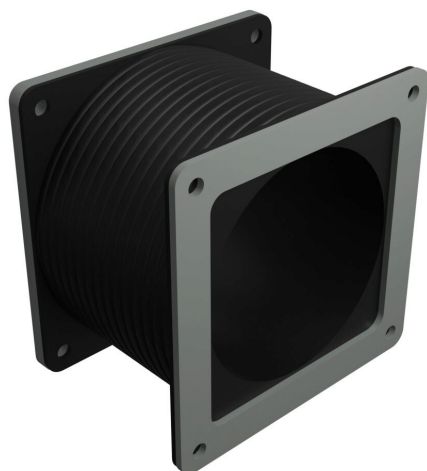


1485CFF Cut Sheet



Hammond pull-through wireway fitting, flexible fitting, 4 x 4 x 3 to 10in, Gortiflex™ bellows with carbon steel flanges, ANSI 61 gray, powder coat finish, NEMA 12. For use with 1485 and 1487 series wireway.

For complete product information, please see this item on our store at the following link:



<https://www.automationdirect.com/pn/1485CFF>

Technical Specifications

Brand	Hammond
Item	Wireway fitting
Fitting Type	Flexible fitting
Wireway Type	Pull-through
Size	4 x 4 x 3 to 10in
Material	Gortiflex™ bellows with carbon steel flanges
Color	ANSI 61 gray
Finish	Powder coat
Knockouts	No
NEMA Rating	12
IP Rating	IP54
For Use With	1485 and 1487 series wireway

Agency Approvals

UL Listed File #	E186830
UL Recognized File #	None
UL Hazardous File #	None
CSA File #	LL21312
RoHS Status	Meets RoHS Chemical Restrictions - No CE (See RoHS Statement Below)
EU REACH	View EU REACH document
Other	RoHS Statement

Dimensional Drawings



2D Drawing PDF Link:
<https://cdn.automationdirect.com/static/drawings/1485CFF.pdf>
See store item page for other formats.