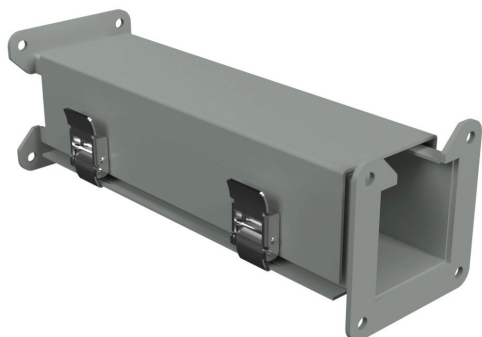


1485BZC12 Cut Sheet



Hammond lay-in wireway fitting, counter-clockwise transposition, 2.5 x 2.5in, carbon steel, ANSI 61 gray, powder coat finish, quick-release clamps, NEMA 12. For use with 1485 series wireway.

For complete product information, please see this item on our store at the following link:



<https://www.automationdirect.com/pn/1485BZC12>

Technical Specifications

Brand	Hammond
Item	Wireway fitting
Fitting Type	Counter-clockwise transposition
Wireway Type	Lay-in
Size	2.5 x 2.5in
Material	Carbon steel
Color	ANSI 61 gray
Finish	Powder coat

Cover Type	Hinged
Latch Type	Quick-release clamps
Knockouts	No
NEMA Rating	12
IP Rating	IP54
Includes	(1) snap-on flat sealing plate
For Use With	1485 series wireway

Agency Approvals

UL Listed File #	E186830
UL Recognized File #	None
UL Hazardous File #	None
CSA File #	LL21312
RoHS Status	Meets RoHS Chemical Restrictions - No CE (See RoHS Statement Below)
EU REACH	View EU REACH document
Other	RoHS Statement

Dimensional Drawings



2D Drawing PDF Link:
<https://cdn.automationdirect.com/static/drawings/1485BZC12.pdf>
See store item page for other formats.