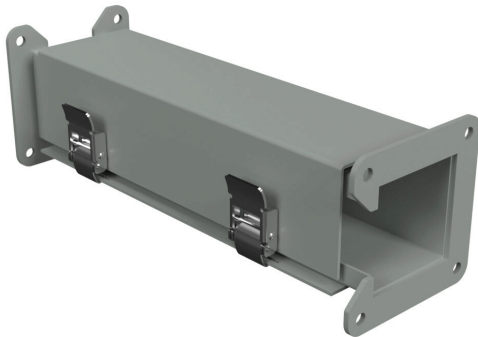


1485BZ12 Cut Sheet



Hammond lay-in wireway fitting, clockwise transposition, 2.5 x 2.5in, carbon steel, ANSI 61 gray, quick-release clamps, NEMA 12.

For complete product information, please see this item on our store at the following link:



<https://www.automationdirect.com/pn/1485BZ12>

Technical Specifications

Brand	Hammond
Item	Wireway fitting
Fitting Type	Clockwise transposition
Wireway Type	Lay-in
Size	2.5 x 2.5in
Material	Carbon steel
Color	ANSI 61 gray
Finish	Powder coat
Cover Type	Hinged
Latch Type	Quick-release clamps
NEMA Rating	12
IP Rating	IP54
Includes	(1) snap-on flat sealing plate

Agency Approvals

UL Listed File #	E186830
UL Recognized File #	None
UL Hazardous File #	None
CSA File #	LL21312
RoHS Status	Meets RoHS Chemical Restrictions - No CE (See RoHS Statement Below)
EU REACH	View EU REACH document
Other	RoHS Statement