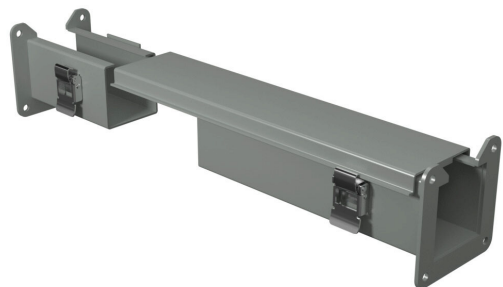


1485BW1 Cut Sheet



Hammond lay-in wireway fitting, cut-off fitting, 2.5 x 2.5 x 9 to 15in, carbon steel, ANSI 61 gray, powder coat finish, quick-release clamps, NEMA 12. For use with 1485 series wireway.

For complete product information, please see this item on our store at the following link:



<https://www.automationdirect.com/pn/1485BW1>

Technical Specifications

Brand	Hammond
Item	Wireway fitting
Fitting Type	Cut-off fitting
Wireway Type	Lay-in
Size	2.5 x 2.5 x 9 to 15in
Material	Carbon steel
Color	ANSI 61 gray
Finish	Powder coat

Cover Type	Hinged
Latch Type	Quick-release clamps
Knockouts	No
NEMA Rating	12
IP Rating	IP54
Includes	(1) angle sealing plate
For Use With	1485 series wireway
Additional Information	Does not meet CSA or UL requirements

Agency Approvals

UL Listed File #	None
UL Recognized File #	None
UL Hazardous File #	None
CSA File #	None
RoHS Status	Meets RoHS Chemical Restrictions - No CE (See RoHS Statement Below)
EU REACH	View EU REACH document
Other	RoHS Statement

Dimensional Drawings



2D Drawing PDF Link:
<https://cdn.automationdirect.com/static/drawings/1485BW1.pdf>
See store item page for other formats.