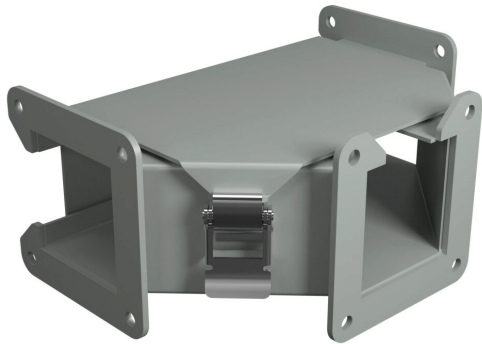


# 1485BTQ Cut Sheet



Hammond lay-in wireway fitting, tee, 2.5 x 2.5in, outside opening, carbon steel, ANSI 61 gray, quick-release clamps, NEMA 12.

For complete product information, please see this item on our store at the following link:



<https://www.automationdirect.com/pn/1485BTQ>

---

## Technical Specifications

<b>Brand</b>	Hammond
<b>Item</b>	Wireway fitting
<b>Fitting Type</b>	Tee
<b>Wireway Type</b>	Lay-in
<b>Size</b>	2.5 x 2.5in
<b>Opening</b>	Outside
<b>Material</b>	Carbon steel
<b>Color</b>	ANSI 61 gray
<b>Finish</b>	Powder coat
<b>Cover Type</b>	Hinged
<b>Latch Type</b>	Quick-release clamps
<b>NEMA Rating</b>	12
<b>IP Rating</b>	IP54
<b>Includes</b>	(2) snap-on flat sealing plates

---

## Agency Approvals

<b>UL Listed File #</b>	E186830
<b>UL Recognized File #</b>	None
<b>UL Hazardous File #</b>	None
<b>CSA File #</b>	LL21312
<b>RoHS Status</b>	Meets RoHS Chemical Restrictions - No CE (See RoHS Statement Below)
<b>EU REACH</b>	<a href="#">View EU REACH document</a>
<b>Other</b>	<a href="#">RoHS Statement</a>