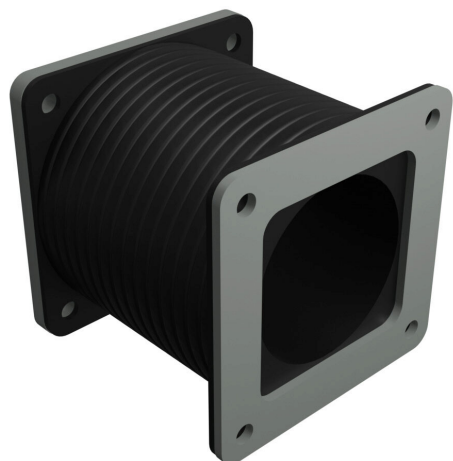


# 1485BFF Cut Sheet



Hammond pull-through wireway fitting, flexible fitting, 2.5 x 2.5 x 3 to 10in, Gortiflex™ bellows with carbon steel flanges, ANSI 61 gray, NEMA 12.

For complete product information, please see this item on our store at the following link:



<https://www.automationdirect.com/pn/1485BFF>

---

## Technical Specifications

<b>Brand</b>	Hammond
<b>Item</b>	Wireway fitting
<b>Fitting Type</b>	Flexible fitting
<b>Wireway Type</b>	Pull-through
<b>Size</b>	2.5 x 2.5 x 3 to 10in
<b>Material</b>	Gortiflex™ bellows with carbon steel flanges
<b>Color</b>	ANSI 61 gray
<b>Finish</b>	Powder coat
<b>NEMA Rating</b>	12
<b>IP Rating</b>	IP54

---

## Agency Approvals

<b>UL Listed File #</b>	E186830
<b>UL Recognized File #</b>	None
<b>UL Hazardous File #</b>	None
<b>CSA File #</b>	LL21312
<b>RoHS Status</b>	Meets RoHS Chemical Restrictions - No CE (See RoHS Statement Below)
<b>EU REACH</b>	<a href="#">View EU REACH document</a>
<b>Other</b>	<a href="#">RoHS Statement</a>