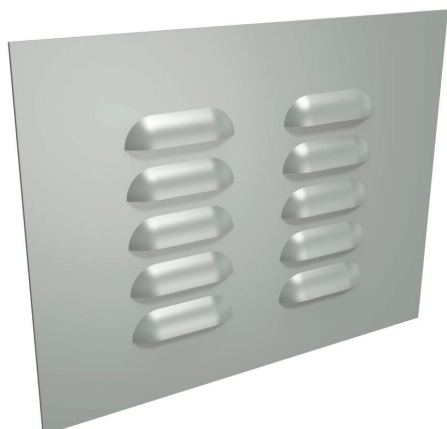


# 1481L3R68GY Cut Sheet



Hammond louver vent assembly, 6.40 x 8.30in (HxW), carbon steel, ANSI 61 gray, powder coat finish, 3.50 x 5.75in (HxW) cutout, for ventilation of metal enclosure. Aluminum filter mesh and mounting hardware included.

For complete product information, please see this item on our store at the following link:



<https://www.automationdirect.com/pn/1481L3R68GY>

## Technical Specifications

<b>Brand</b>	Hammond
<b>Item</b>	Louver vent assembly
<b>Replacement</b>	No
<b>Size</b>	6.40 x 8.30in (HxW)
<b>Material</b>	Carbon steel
<b>Color</b>	ANSI 61 gray
<b>Finish</b>	Powder coat
<b>Cutout Size</b>	3.50 x 5.75in (HxW)
<b>Application</b>	For ventilation of metal enclosure
<b>Includes</b>	Aluminum filter mesh and mounting hardware
<b>Additional Information</b>	Some assembly required

## Agency Approvals

<b>UL Listed File #</b>	E65324
<b>UL Recognized File #</b>	None
<b>UL Hazardous File #</b>	None
<b>CSA File #</b>	LR21001
<b>RoHS Status</b>	Meets RoHS Chemical Restrictions - No CE (See RoHS Statement Below)
<b>EU REACH</b>	<a href="#">View EU REACH document</a>

## Dimensional Drawings



2D Drawing PDF Link:  
<https://cdn.automationdirect.com/static/drawings/1481L3R68GY.pdf>  
See store item page for other formats.