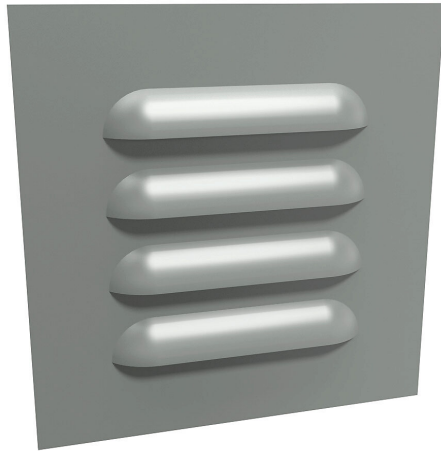


1481L3R66GY Cut Sheet



Hammond louver vent assembly, 6.40 x 6.30in (HxW), carbon steel, ANSI 61 gray, powder coat finish, 4.00 x 3.75in (HxW) cutout, for ventilation of metal enclosure. Aluminum filter mesh and mounting hardware included.

For complete product information, please see this item on our store at the following link:



<https://www.automationdirect.com/pn/1481L3R66GY>

Technical Specifications

Brand	Hammond
Item	Louver vent assembly
Replacement	No
Size	6.40 x 6.30in (HxW)
Material	Carbon steel
Color	ANSI 61 gray
Finish	Powder coat
Cutout Size	4.00 x 3.75in (HxW)
Application	For ventilation of metal enclosure
Includes	Aluminum filter mesh and mounting hardware
Additional Information	Some assembly required

Agency Approvals

UL Listed File #	E65324
UL Recognized File #	None
UL Hazardous File #	None
CSA File #	LR21001
RoHS Status	Meets RoHS Chemical Restrictions - No CE (See RoHS Statement Below)
EU REACH	View EU REACH document

Dimensional Drawings



2D Drawing PDF Link:
<https://cdn.automationdirect.com/static/drawings/1481L3R66GY.pdf>
See store item page for other formats.