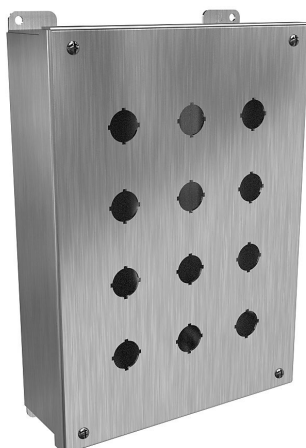


1435MSSO Cut Sheet



Hammond pushbutton enclosure, 12 holes, 22mm, NEMA 3R/4/4X, 12 x 9 x 3in (HxWxD), wall mount, 304 stainless steel, #4 brush finish, hinged screw cover.

For complete product information, please see this item on our store at the following link:



<https://www.automationdirect.com/pn/1435MSSO>

Technical Specifications

Brand	Hammond
Item	Pushbutton enclosure
Number of Pushbutton Holes	12 holes
Pushbutton Hole Nominal Size	22mm
Slope Top	No
NEMA Rating	3R/4/4X
IP Rating	IP66
Nominal Enclosure Dimensions	12 x 9 x 3in (HxWxD)
Enclosure Height	12.06in
Enclosure Width	8.81in
Enclosure Depth	3.22in

Mounting	Wall
Integral Mounting Feet	Yes
Integral Mounting Flange	No
Dual Access	No
Knockouts	No
Material	304 stainless steel
Finish	#4 brush
Cover Type	Hinged screw cover
Hinge Type	Internal lift-off hinge
Number of Hinges Per Door	2
Padlockable	No
Keylocking	No

Agency Approvals

UL Listed File #	E65324
UL Recognized File #	None
UL Hazardous File #	None
CE	View CE declarations
CSA File #	LR21001
RoHS Status	Yes (See CE Doc)
EU REACH	View EU REACH document

Dimensional Drawings



2D Drawing PDF Link:
<https://cdn.automationdirect.com/static/drawings/1435MSSO.pdf>
See store item page for other formats.