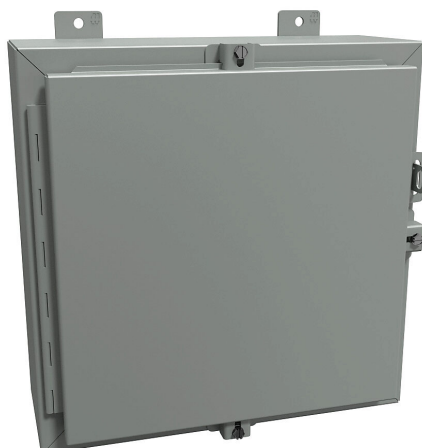


1418N4G6 Cut Sheet



Hammond enclosure, NEMA 3R/4/12, 16 x 16 x 6in (HxWxD), wall mount, carbon steel, ANSI 61 gray, powder coat finish, single-door, stainless steel clamps, padlock hasp and staple.

For complete product information, please see this item on our store at the following link:



<https://www.automationdirect.com/pn/1418N4G6>

Technical Specifications

Brand	Hammond	Dual Access	No
Item	Enclosure	Knockouts	No
Subpanel	Subpanel included	Material	Carbon steel
Slope Top	No	Color	ANSI 61 gray
NEMA Rating	3R/4/12	Finish	Powder coat
IP Rating	IP66	Cover Type	Single-door
Nominal Enclosure Dimensions	16 x 16 x 6in (HxWxD)	Hinge Type	Continuous hinge
Enclosure Height	16.00in	Number of Hinges Per Door	1
Enclosure Width	16.00in	Latch Type	Stainless steel clamps
Enclosure Depth	7.20in	Number Of Latches	3
Mounting	Wall	Padlock Attachment Type	Padlock hasp and staple
Integral Mounting Feet	Yes	Padlockable	Yes
Integral Mounting Flange	No	Keylocking	No

Agency Approvals

UL Listed File #	E65324
UL Recognized File #	None
UL Hazardous File #	None
CE	View CE declarations
CSA File #	LR21001
RoHS Status	Yes (See CE Doc)
EU REACH	View EU REACH document