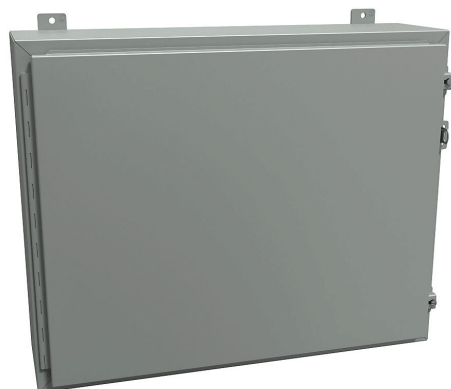


1418KR8 Cut Sheet



Hammond enclosure, NEMA 12/13, 24 x 30 x 8in (HxWxD), wall mount, carbon steel, ANSI 61 gray, powder coat finish, single-door, stainless steel clamps, padlock hasp and staple.

For complete product information, please see this item on our store at the following link:



<https://www.automationdirect.com/pn/1418KR8>

Technical Specifications

Brand	Hammond
Item	Enclosure
Subpanel	Subpanel included
Slope Top	No
3-Piece Assembly	No
Vented	No
NEMA Rating	12/13
IP Rating	IP54
Nominal Enclosure Dimensions	24 x 30 x 8in (HxWxD)
Enclosure Height	24.00in
Enclosure Width	30.00in
Enclosure Depth	9.20in
Mounting	Wall
Integral Mounting Feet	Yes
Integral Mounting Flange	No

Dual Access	No
Knockouts	No
Bottom Gland Plate	No
Material	Carbon steel
Color	ANSI 61 gray
Finish	Powder coat
Cover Type	Single-door
Hinge Type	Continuous hinge
Number of Hinges Per Door	1
Latch Type	Stainless steel clamps
Number Of Latches	2
Padlock Attachment Type	Padlock hasp and staple
Shelf	No
Padlockable	Yes
Keylocking	No

Agency Approvals

UL Listed File #	E65324
UL Recognized File #	None
UL Hazardous File #	None
CE	View CE declarations
CSA File #	LR21001
RoHS Status	Yes (See CE Doc)
EU REACH	View EU REACH document

Dimensional Drawings



2D Drawing PDF Link:
<https://cdn.automationdirect.com/static/drawings/1418KR8.pdf>
See store item page for other formats.