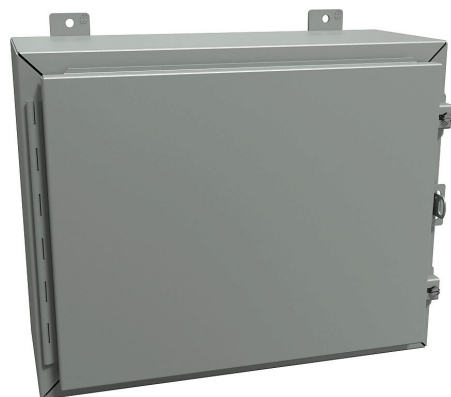


# 1418CR8 Cut Sheet



Hammond enclosure, NEMA 12/13, 16 x 20 x 8in (HxWxD), wall mount, carbon steel, ANSI 61 gray, powder coat finish, single-door, stainless steel clamps, padlock hasp and staple.

For complete product information, please see this item on our store at the following link:



<https://www.automationdirect.com/pn/1418CR8>

## Technical Specifications

|                                     |                       |
|-------------------------------------|-----------------------|
| <b>Brand</b>                        | Hammond               |
| <b>Item</b>                         | Enclosure             |
| <b>Subpanel</b>                     | Subpanel included     |
| <b>Slope Top</b>                    | No                    |
| <b>NEMA Rating</b>                  | 12/13                 |
| <b>IP Rating</b>                    | IP54                  |
| <b>Nominal Enclosure Dimensions</b> | 16 x 20 x 8in (HxWxD) |
| <b>Enclosure Height</b>             | 16.00in               |
| <b>Enclosure Width</b>              | 20.00in               |
| <b>Enclosure Depth</b>              | 9.20in                |
| <b>Mounting</b>                     | Wall                  |
| <b>Integral Mounting Feet</b>       | Yes                   |
| <b>Integral Mounting Flange</b>     | No                    |

|                                  |                         |
|----------------------------------|-------------------------|
| <b>Dual Access</b>               | No                      |
| <b>Knockouts</b>                 | No                      |
| <b>Material</b>                  | Carbon steel            |
| <b>Color</b>                     | ANSI 61 gray            |
| <b>Finish</b>                    | Powder coat             |
| <b>Cover Type</b>                | Single-door             |
| <b>Hinge Type</b>                | Continuous hinge        |
| <b>Number of Hinges Per Door</b> | 1                       |
| <b>Latch Type</b>                | Stainless steel clamps  |
| <b>Number Of Latches</b>         | 2                       |
| <b>Padlock Attachment Type</b>   | Padlock hasp and staple |
| <b>Padlockable</b>               | Yes                     |
| <b>Keylocking</b>                | No                      |

## Agency Approvals

|                             |  |
|-----------------------------|--|
| <b>UL Listed File #</b>     | E65324                                 |
| <b>UL Recognized File #</b> | None                                   |
| <b>UL Hazardous File #</b>  | None                                   |
| <b>CE</b>                   | <a href="#">View CE declarations</a>   |
| <b>CSA File #</b>           | LR21001                                |
| <b>RoHS Status</b>          | Yes (See CE Doc)                       |
| <b>EU REACH</b>             | <a href="#">View EU REACH document</a> |