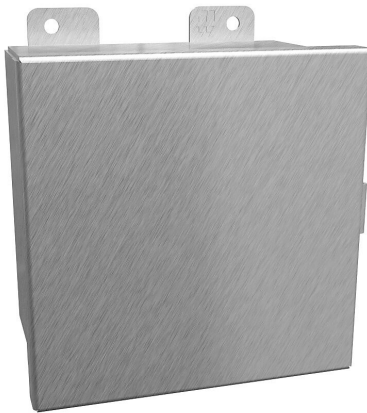


1414N4PHS16E Cut Sheet



Hammond enclosure, NEMA 3R/4/4X/12/13, 6 x 6 x 4in (HxWxD), wall mount, 316 stainless steel, #4 brush finish, single-door, stainless steel clamps.

For complete product information, please see this item on our store at the following link:



<https://www.automationdirect.com/pn/1414N4PHS16E>

Technical Specifications

Brand	Hammond
Item	Enclosure
Subpanel	Subpanel included
Slope Top	No
3-Piece Assembly	No
Vented	No
NEMA Rating	3R/4/4X/12/13
IP Rating	IP66
Nominal Enclosure Dimensions	6 x 6 x 4in (HxWxD)
Enclosure Height	6.31in
Enclosure Width	6.31in
Enclosure Depth	4.20in
Mounting	Wall
Integral Mounting Feet	Yes

Integral Mounting Flange	No
Dual Access	No
Knockouts	No
Bottom Gland Plate	No
Material	316 stainless steel
Finish	#4 brush
Cover Type	Single-door
Hinge Type	Continuous hinge
Number of Hinges Per Door	1
Latch Type	Stainless steel clamps
Number Of Latches	1
Shelf	No
Padlockable	No
Keylocking	No

Agency Approvals

UL Listed File #	E65324
UL Recognized File #	None
UL Hazardous File #	None
CE	View CE declarations
CSA File #	LR21001
RoHS Status	Yes (See CE Doc)
EU REACH	View EU REACH document

Dimensional Drawings



2D Drawing PDF Link:
<https://cdn.automationdirect.com/static/drawings/1414N4PHS16E.pdf>
See store item page for other formats.