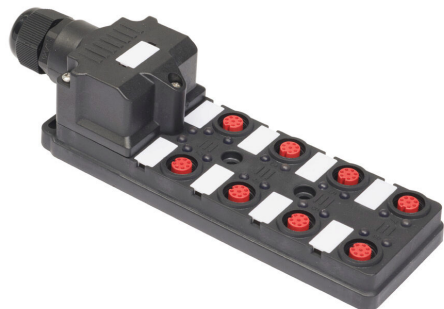


# 140210-Z Cut Sheet



IDEM Z-Range junction block, 8 ports, 8-pin M12 sockets, 24 VDC LED indicator(s), cable clamp for field-wired connection. For use with IDEM Z-Range switches.

For complete product information, please see this item on our store at the following link:



<https://www.automationdirect.com/pn/140210-Z>

## Technical Specifications

<b>Brand</b>	IDEM
<b>Series</b>	Z-Range
<b>Item</b>	Junction block
<b>Number of Ports</b>	8
<b>Socket Type</b>	8-pin M12
<b>Indicator</b>	24 VDC LED
<b>Connector Type</b>	Cable clamp for field-wired connection
<b>For Use With</b>	IDEM Z-Range switches

## Agency Approvals

<b>UL Listed File #</b>	E300466
<b>UL Recognized File #</b>	None
<b>UL Hazardous File #</b>	None
<b>CE</b>	<a href="#">View CE declarations</a>
<b>CSA File #</b>	None
<b>RoHS Status</b>	Yes (See CE Doc)
<b>EU REACH</b>	<a href="#">View EU REACH document</a>

## Dimensional Drawings



2D Drawing PDF Link:  
<https://cdn.automationdirect.com/static/drawings/2d/140210-Z.pdf>  
See store item page for other formats.