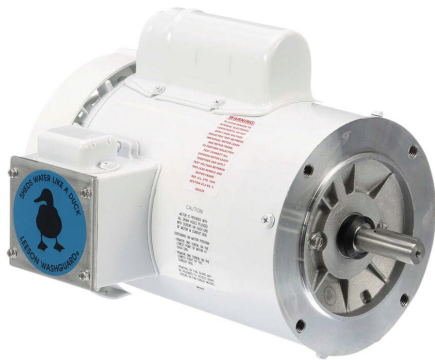


# 114317.00 Cut Sheet



Leeson Washguard White Duck premium efficiency AC induction motor, washdown, 1hp, 1-phase, 115/208-230 VAC, 1800rpm, TEFC, NEMA 56C frame, rolled steel, C-face mount.

For complete product information, please see this item on our store at the following link:



<https://www.automationdirect.com/pn/114317.00>

## Technical Specifications

<b>Brand</b>	Leeson
<b>Item</b>	Motor
<b>Series</b>	Washguard White Duck
<b>Efficiency Group</b>	Premium efficiency
<b>Efficiency</b>	75
<b>Voltage Type</b>	AC
<b>Motor Type</b>	Induction
<b>Motor Application</b>	Washdown
<b>Horsepower Rating</b>	1hp
<b>Number of Phases</b>	1
<b>Voltage Rating</b>	115/208-230 VAC
<b>Synchronous Speed</b>	1800rpm
<b>Nameplate RPM</b>	1725rpm
<b>Overload Type</b>	None
<b>Enclosure Type</b>	TEFC

<b>Shaft Type</b>	Round with square key
<b>Shaft Diameter</b>	5/8in
<b>Shaft Material</b>	303 stainless (C-501) steel
<b>Motor Frame</b>	NEMA 56C
<b>Frame Material</b>	Rolled steel
<b>Electrically Reversible</b>	Yes
<b>Insulation Class</b>	Class F
<b>IP Rating</b>	IP55
<b>Service Factor</b>	1.15
<b>Integrated Brake</b>	No
<b>NEMA Design</b>	Design N
<b>Junction Box Orientation</b>	F1
<b>Mounting</b>	C-face
<b>Mounting Orientation</b>	Horizontal or vertical

## Agency Approvals

<b>UL Listed File #</b>	None
<b>UL Recognized File #</b>	E49747
<b>UL Hazardous File #</b>	None
<b>CSA File #</b>	LR2025
<b>RoHS Status</b>	Yes (See CE Doc)
<b>EU REACH</b>	<a href="#">View EU REACH document</a>

## Dimensional Drawings



2D Drawing PDF Link:  
<https://cdn.automationdirect.com/static/drawings/114317.00.pdf>  
See store item page for other formats.