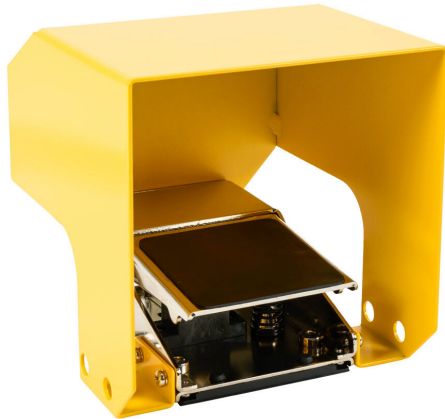


107023003444101 Cut Sheet



Mindman manual valve, locking foot pedal, single, 3-port (3-way), 2-position, N.C., spring return, 1/4in female NPT inlet(s), 1/4in female NPT outlet(s), 1/4in female NPT exhaust(s), Cv=0.44, steel foot guard(s), yellow.

For complete product information, please see this item on our store at the following link:



<https://www.automationdirect.com/pn/107023003444101>

Technical Specifications

Brand	Mindman
Item	Valve
Working Fluid	Pneumatic
Valve Type	Manual directional control
Port Quantity	3-port (3-way)
Number Of Positions	2
Valve Configuration	N.C.
Operator Type	Locking foot pedal
Foot Switch Type	Single
Action	Spring return
Body Material	Aluminum

Seal Material	Nitrile
Inlet Port	1/4in female NPT
Outlet Port	1/4in female NPT
Exhaust Port	1/4in female NPT
Flow Coefficient	0.44
Maximum Operating Pressure	102 psi
Minimum Operating Pressure	29 psi
Working Fluid Temperature	-5 to +60 °C (23-140 °F)
Foot Guard Material	Steel
Foot Guard Color	Yellow
Manufacturer Part Number	MVFA-230-8A-PL-NPT

Agency Approvals

UL Listed File #	None
UL Recognized File #	None
UL Hazardous File #	None
CE	None
CSA File #	None
RoHS Status	Meets RoHS Chemical Restrictions - No CE (See RoHS Statement Below)
EU REACH	View EU REACH document
Other	RoHS Statement

Dimensional Drawings



2D Drawing PDF Link:
<https://cdn.automationdirect.com/static/drawings/2d/107023003444101.pdf>
See store item page for other formats.