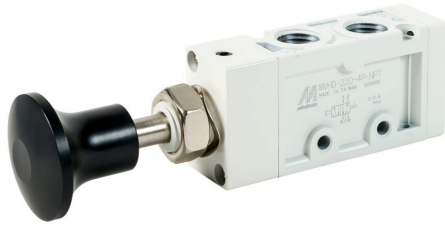


106322000044002 Cut Sheet



Mindman pneumatic manual valve, 5-port (4-way), 2-position, push-pull knob, detented, 1/4in female NPT inlet(s), (2) 1/4in female NPT outlet(s), (2) 1/8in female NPT exhaust(s), Cv=1, panel or surface mount.

For complete product information, please see this item on our store at the following link:



<https://www.automationdirect.com/pn/106322000044002>

Technical Specifications

Brand	Mindman
Item	Valve
Working Fluid	Air
Valve Type	Manual directional control
Port Quantity	5-port (4-way)
Number Of Positions	2
Operator Type	Push-pull knob
Action	Detented
Body Material	Aluminum
Seal Material	Nitrile
Mounting	Panel or surface

Inlet Port	1/4in female NPT
Outlet Port	(2) 1/4in female NPT
Exhaust Port	(2) 1/8in female NPT
Flow Coefficient	1
Maximum Operating Pressure	116 psi
Minimum Operating Pressure	0 psi
Working Fluid Temperature	-5 to +50 °C (23-122 °F)
Includes	Mounting hardware
Additional Information	Panel mounting hole 14.5mm dia x 1.6-8mm thick
Manufacturer Part Number	MVHD-220-4P-NPT

Agency Approvals

UL Listed File #	None
UL Recognized File #	None
UL Hazardous File #	None
CE	None
CSA File #	None
RoHS Status	Meets RoHS Chemical Restrictions - No CE (See RoHS Statement Below)
EU REACH	View EU REACH document
Other	RoHS Statement

Dimensional Drawings



2D Drawing PDF Link:
<https://cdn.automationdirect.com/static/drawings/2d/106322000044002.pdf>
See store item page for other formats.