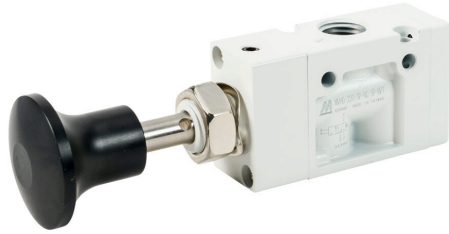


106322000034003 Cut Sheet



Mindman pneumatic manual valve, 3-port (3-way), 2-position, N.C., push-pull knob, spring return, 1/4in female NPT inlet(s), 1/4in female NPT outlet(s), 1/4in female NPT exhaust(s), Cv=1, panel or surface mount.

For complete product information, please see this item on our store at the following link:



<https://www.automationdirect.com/pn/106322000034003>

Technical Specifications

Brand	Mindman
Item	Valve
Working Fluid	Air
Valve Type	Manual directional control
Port Quantity	3-port (3-way)
Number Of Positions	2
Valve Configuration	N.C.
Operator Type	Push-pull knob
Action	Spring return
Body Material	Aluminum
Body Width	22mm
Seal Material	Nitrile

Mounting	Panel or surface
Inlet Port	1/4in female NPT
Outlet Port	1/4in female NPT
Exhaust Port	1/4in female NPT
Flow Coefficient	1
Maximum Operating Pressure	116 psi
Minimum Operating Pressure	0 psi
Working Fluid Temperature	-5 to +50 °C (23-122 °F)
Includes	Mounting hardware
Additional Information	Panel mounting hole 14.5mm dia x 1.6-8mm thick
Manufacturer Part Number	MVHD-220-3P-NC-SP-NPT

Agency Approvals

UL Listed File #	None
UL Recognized File #	None
UL Hazardous File #	None
CE	None
CSA File #	None
RoHS Status	Meets RoHS Chemical Restrictions - No CE (See RoHS Statement Below)
EU REACH	View EU REACH document
Other	RoHS Statement

Dimensional Drawings



2D Drawing PDF Link:
<https://cdn.automationdirect.com/static/drawings/2d/106322000034003.pdf>
See store item page for other formats.