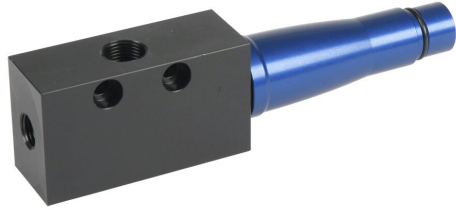


10.02.01.01962 Cut Sheet



Schmalz basic vacuum ejector, 308.8 l/min (10.9 cfm) suction rate, G1/4 female BSPP inlet(s), G3/8 female BSPP vacuum port.

For complete product information, please see this item on our store at the following link:



<https://www.automationdirect.com/pn/10.02.01.01962>

Technical Specifications

Brand	Schmalz
Item	Vacuum ejector
Ejector Type	Basic
Degree of Evacuation	90%
Suction Rate	308.8 l/min (10.9 cfm)
Air Consumption	103 l/min (3.6 cfm)
Average Noise Level	72 dBA
Inlet Port	G1/4 female BSPP
Vacuum Port	G3/8 female BSPP
Air Saving	No

Agency Approvals

RoHS Status	No
EU REACH	View EU REACH document

Dimensional Drawings



2D Drawing PDF Link:
<https://cdn.automationdirect.com/static/drawings/2d/10.02.01.01962.pdf>
See store item page for other formats.