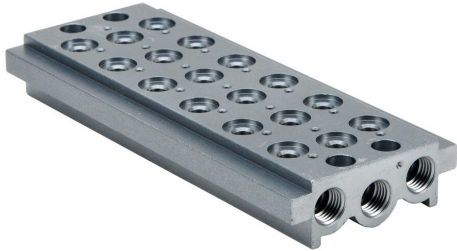


0223000601U Cut Sheet



Metal Work air valve manifold, aluminum, 145 psi (10 bar) maximum operating pressure, (6) stations, 1/4in female NPT inlet(s), 1/4in female NPT exhaust(s). For use with 1/8in NPT Series 70 valves.

For complete product information, please see this item on our store at the following link:



<https://www.automationdirect.com/pn/0223000601U>

Technical Specifications

Brand	Metal Work
Item	Valve manifold
Working Fluid	Air
Material	Aluminum
Number of Stations	6
Maximum Operating Pressure	145 psi (10 bar)
Inlet Port	1/4in female NPT
Exhaust Port	1/4in female NPT
For Use With	1/8in NPT Series 70 valves

Agency Approvals

UL Listed File #	None
UL Recognized File #	None
UL Hazardous File #	None
CSA File #	None
RoHS Status	No
EU REACH	View EU REACH document

Dimensional Drawings



2D Drawing PDF Link:
<https://cdn.automationdirect.com/static/drawings/2d/0223000601U.pdf>
See store item page for other formats.