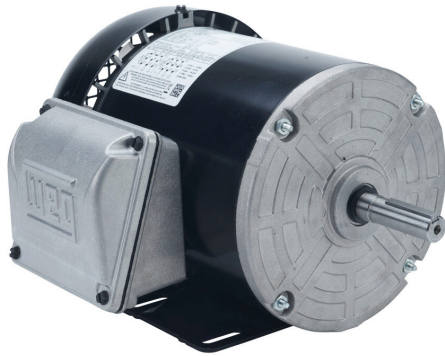


.5018ES3E56-S Cut Sheet



WEG Electric S standard efficiency AC induction motor, general purpose and inverter rated, 1/2hp, 3-phase, 208-230/460 VAC, 1800rpm, TEFC, NEMA 56 frame, rolled steel, rigid base mount.

For complete product information, please see this item on our store at the following link:



<https://www.automationdirect.com/pn/.5018ES3E56-S>

Technical Specifications

Brand	WEG Electric
Item	Motor
Series	S
Efficiency Group	Standard efficiency
Efficiency	77
Voltage Type	AC
Motor Type	Induction
Motor Application	General purpose and inverter rated
Horsepower Rating	1/2hp
Number of Phases	3
Voltage Rating	208-230/460 VAC
Synchronous Speed	1800rpm
Nameplate RPM	1760rpm
Overload Type	None
Enclosure Type	TEFC
Shaft Type	Round with square key

Shaft Diameter	5/8in
Shaft Material	1045 carbon steel
Motor Frame	NEMA 56
Frame Material	Rolled steel
Electrically Reversible	Yes
Insulation Class	Class F
IP Rating	IP55
Constant Torque Rating	10:1
Variable Torque Rating	1000:1
Service Factor	1.15
Integrated Brake	No
Junction Box Orientation	F1
Mounting	Rigid base
Mounting Orientation	Horizontal
Additional Information	Class I Div 2 hazardous rating

Agency Approvals

UL Listed File #	E104590
CE	None
CSA File #	LR38324
RoHS Status	No
EU REACH	View EU REACH document

Dimensional Drawings



2D Drawing PDF Link:
<https://cdn.automationdirect.com/static/drawings/2d/.5018ES3E56-S.pdf>
See store item page for other formats.