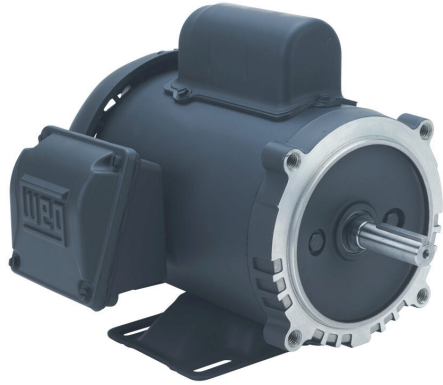


.2518ES1BW56C-S Cut Sheet



WEG Electric S standard efficiency AC induction motor, general purpose, 1/4hp, 1-phase, 115/208-230 VAC, 1800rpm, TEFC, NEMA 56C frame, rolled steel, C-face/rigid base mount.

For complete product information, please see this item on our store at the following link:



<https://www.automationdirect.com/pn/.2518ES1BW56C-S>

Technical Specifications

Brand	WEG Electric
Item	Motor
Series	S
Efficiency Group	Standard efficiency
Efficiency	57
Voltage Type	AC
Motor Type	Induction
Motor Application	General purpose
Horsepower Rating	1/4hp
Number of Phases	1
Voltage Rating	115/208-230 VAC
Synchronous Speed	1800rpm
Nameplate RPM	1735rpm
Overload Type	None
Enclosure Type	TEFC

Shaft Type	Round with square key
Shaft Diameter	5/8in
Shaft Material	1045 carbon steel
Motor Frame	NEMA 56C
Frame Material	Rolled steel
Electrically Reversible	Yes
Insulation Class	Class F
IP Rating	IP55
Service Factor	1.15
Integrated Brake	No
NEMA Design	Design N
Junction Box Orientation	F1
Mounting	C-face/rigid base
Mounting Orientation	Horizontal or vertical

Agency Approvals

UL Listed File #	E104590
CE	None
CSA File #	LR38324
RoHS Status	No
EU REACH	View EU REACH document

Dimensional Drawings



2D Drawing PDF Link:
<https://cdn.automationdirect.com/static/drawings/2d/.2518ES1BW56C-S.pdf>
See store item page for other formats.