

# CONTRINEX M18 Metal Photoelectric Sensors



**LTR-M18MA-PMS-603**

## M18 (18mm) metal – DC

- Diffuse, diffuse with adjustable background suppression, retroreflective, through-beam styles
- M12 quick-disconnect models; purchase cable separately
- Complete overload protection
- IP67 rated
- 2-year warranty
- IO-Link V 1.0 on PNP models

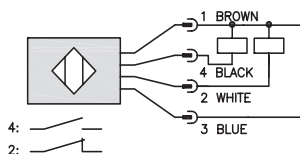


M18 Metal Photoelectric Sensors									
Part Number	Price	Sensing Range	Switching Frequency	Light Type	Logic	Output Function	Connection Type	Wiring	Drawing Link
<b>Diffuse Reflective</b>									
<a href="#">LTR-M18MA-PMS-603</a>	\$40.50	3-1200mm [0.11-47.24 in]	1.5 kHz	Visible red	PNP	Complementary Light-on / Dark-on	4-pin M12 quick-disconnect	2	<a href="#">PDF</a>
<a href="#">LTR-M18MA-PMS-101</a>	\$40.50	3-1200mm [0.11-47.24 in]	1.5 kHz	Visible red	NPN	Complementary Light-on / Dark-on	4-pin M12 quick-disconnect	1	<a href="#">PDF</a>
<b>*Retroreflective sensor</b>									
<a href="#">LRR-M18MA-NMS-603</a>	\$41.50	0.02-7m [0.06-22.96 ft]	1.5 kHz	Visible red	PNP	Complementary Light-on / Dark-on	4-pin M12 quick-disconnect	2	<a href="#">PDF</a>
<a href="#">LRR-M18MA-NMS-101</a>	\$41.50	0.02-7m [0.06-22.96 ft]	1.5 kHz	Visible red	NPN	Complementary Light-on / Dark-on	4-pin M12 quick-disconnect	1	<a href="#">PDF</a>
<b>*Purchase reflector separately</b>									
<b>Background Suppression</b>									
<a href="#">LHR-M18MA-PMS-603</a>	\$51.50	10-250mm [0.39-9.84 in]	700 Hz	Visible red	PNP	Complementary Light-on / Dark-on	4-pin M12 quick-disconnect	2	<a href="#">PDF</a>
<a href="#">LHR-M18MA-TMS-603</a>	\$51.50	10-250mm [0.39-9.84 in]	700 Hz	Visible red	PNP	Complementary Light-on / Dark-on	4-pin M12 quick-disconnect	2	<a href="#">PDF</a>
<a href="#">LHR-M18MA-PMS-101</a>	\$51.50	10-250mm [0.39-9.84 in]	700 Hz	Visible red	NPN	Complementary Light-on / Dark-on	4-pin M12 quick-disconnect	1	<a href="#">PDF</a>
<a href="#">LHR-M18MA-TMS-101</a>	\$51.50	10-250mm [0.39-9.84 in]	700 Hz	Visible red	NPN	Complementary Light-on / Dark-on	4-pin M12 quick-disconnect	1	<a href="#">PDF</a>
<b>Through-beam emitters</b>									
<a href="#">LLR-M18MA-NMS-400</a>	\$27.50	0-30m [0-98.43 ft]	1 kHz	Visible red	N/A	N/A	4-pin M12 quick-disconnect	3	<a href="#">PDF</a>
<b>Through-beam receivers</b>									
<a href="#">LLR-M18MA-NMS-603</a>	\$38.00	0-30m [0-98.43 ft]	1 kHz	N/A	PNP	Complementary Light-on / Dark-on	4-pin M12 quick-disconnect	2	<a href="#">PDF</a>
<a href="#">LLR-M18MA-NMS-101</a>	\$38.00	0-30m [0-w98.43 ft]	1 kHz	N/A	NPN	Complementary Light-on / Dark-on	4-pin M12 quick-disconnect	1	<a href="#">PDF</a>

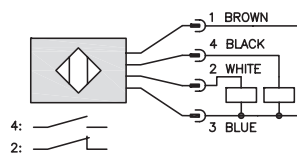
Warning: These products are not safety sensors and are not suitable for use in personal safety applications.

## Wiring Diagrams

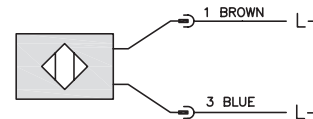
**Diagram 1**  
4-Wire NPN Output



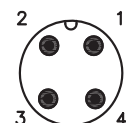
**Diagram 2**  
4-Wire PNP Output



**Diagram 3**  
Emitter



**M12 connector**





# M18 Metal Photoelectric Sensors Specifications



## M18 Metal Photoelectric Sensors Specifications

Sensor type	Diffuse reflective (LTR)	Retroreflective (LRR)	Diffuse reflective with adjustable background suppression (LHR)	Through-Beam (LLR)
<b>Sensing Distance <sup>1</sup> (Except LRR)</b>	3 - 1200 mm [0.11 - 47.24 in]	20 - 7,000 mm [0.78 - 275.59 in]	10 - 250 mm [0.39 - 9.84 in]	0 - 30,000 mm [0 - 1181.10 in]
<b>Operating Range <sup>1</sup> (Except LRR)</b>	5 - 1,000 mm [0.19 - 39.37 in]	30 - 5,500 mm [1.18 - 216.53 in]	15 - 210 mm [0.59 - 8.26 in]	0 - 25,000 mm [0 - 984.25 in]
<b>Light Spot Diameter (Distance)</b>	Ø 11 mm [500mm]/ Ø 21 mm [1m]	Ø 21 mm [1m]/ Ø 110 mm [6m]	Ø 6 mm [100mm]/ Ø 10 mm [250mm]	Ø 35mm [500mm]/ Ø 250mm [6m] 1000mm [25m]
<b>Emission</b>	LED, red 630nm	LED, red 630nm	Pinpoint LED, red 640nm	LED, red 630nm
<b>Sensitivity</b>	30 - 1,200 mm, 3/4-turn pot.	2,500 - 7,000 mm, IO-Link	30 - 250 mm, PM models 3/4-turn pot TM models pushbutton teach	7,000 - 30,000 mm via IO-Link Only
<b>Output Types</b>	NPN or PNP			
<b>Operating Voltage</b>	10-30 VDC			
<b>No Load Supply Current</b>	≤ 15mA	≤ 15mA	≤ 30mA	≤ 7mA (emitter)/ ≤ 13mA (receiver)
<b>Operating (Load) Current</b>	≤ 200mA			
<b>Response Time <sup>2</sup></b>	≤ 300ms (normal)/ ≤ 1ms/≤ 100 µs	≤ 340ms (normal)/ ≤ 1ms/≤ 115 µs	≤ 700ms (normal)/ ≤ 1.1 ms/≤ 500 µs	≤ 500ms (normal)/ ≤ 1ms/≤ 250 µs
<b>Switching Frequency <sup>2</sup></b>	≤ 1.5 kHz (normal)/ ≤ 500Hz/≤ 5 kHz	≤ 1.5 kHz (normal)/ ≤ 500Hz/≤ 4.5 kHz	≤ 700Hz (normal)/ ≤ 450Hz/≤ 1 kHz	≤ 1kHz (normal)/ ≤ 500Hz/≤ 2 kHz
<b>Ripple</b>	≤ 10%Vpp			
<b>Voltage Reversal Protection</b>	Yes			
<b>Short-circuit Protection</b>	Yes			
<b>Operating Temperature</b>	-25 to +65°C [-13 to +149°F]			
<b>Protection Degree</b>	IP67			
<b>LED Indicators - Switching Status</b>	Green LED: excess gain; Yellow LED: sensing state			
<b>Housing Material</b>	Stainless Steel			
<b>Lens Material</b>	PMMA - Poly (methyl methacrylate)			
<b>Shock/Vibration</b>	IEC 60947-5-2			
<b>Tightening Torque</b>	20 N•m max			
<b>Weight</b>	14g [0.49 oz]			
<b>IO-Link</b>	IO-Link version 1.0, PNP units only			
<b>Connectors</b>	4-pin M12 quick-disconnect			
<b>Agency Approvals</b>	cULus, CE			

<sup>1</sup> Object with 90% reflectance (standard white paper)

<sup>2</sup> By default, "Normal" mode. "Fine" and "Fast" modes selectable via IO-Link.

To obtain the most current agency approval information, see the Agency Approval Checklist section on the specific part number's web page.

# Accessories for 18mm Sensors

## Axial Mounting Bracket

Axial mounting bracket available in zinc plated steel or 316L stainless steel. Has two mounting holes (use 4mm screws) and allows for rotation of an optical axis for right-beam-angle-adaptor sensors. Hexagonal nuts not included. For use with 18mm sensors.



**ST18A**

Accessories for 18mm Sensors			
Part Number	Price	Description	Weight lb [g]
<b>ST18A</b>	\$2.00	Micro Detectors mounting bracket, axial, zinc plated steel. For use with 18mm sensors.	0.06 [27.2]
<b>ST18A7W</b>	\$7.25	Micro Detectors mounting bracket, axial, 316L stainless steel. For use with 18mm sensors.	0.06 [27.2]

## Dimensions

mm [inches]



## Right-angle Mounting Bracket

Right-angle mounting bracket for use with 18mm sensors. Has two mounting holes (use 4mm screws) and allows the rotation of an optical axis for axial sensors. Hexagonal nuts not included.

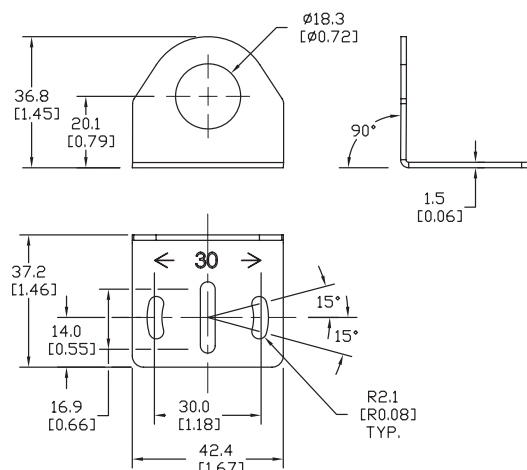


**ST18C**

Accessories for 18mm Sensors			
Part Number	Price	Description	Weight lb [g]
<b>ST18C</b>	\$2.00	Micro Detectors mounting bracket, right-angle, zinc plated steel. For use with 18mm sensors.	0.06 [27.2]
<b>ST18C7W</b>	\$7.25	Micro Detectors mounting bracket, right-angle, 316L stainless steel. For use with 18mm sensors.	0.06 [27.2]

## Dimensions

mm [inches]



# Accessories for 18mm Sensors

## Right-angle Mounting Brackets

Mounting bracket, right-angle, fixed insertion stop adjustment, plastic. For use with 18mm sensors. Available with or without fixed insertion stop.

Accessories for 18mm Sensors				
Part Number	Price	Description	Drawing Link	Weight lb [g]
<a href="#">OPT2104</a>	\$10.50	Wenglor mounting bracket, right-angle, fixed insertion stop adjustment, plastic. For use with 18mm sensors.	<a href="#">PDF</a>	0.06 [27.2]
<a href="#">OPT2105</a>	\$10.50	Wenglor mounting bracket, right-angle, plastic. For use with 18mm sensors.	<a href="#">PDF</a>	0.06 [27.2]



[OPT2104](#), [OPT2105](#)

## Right-angle Swivel Mounting Systems

Mounting bracket, right-angle swivel, 360 degree vertical and horizontal adjustment, 12mm rod mount. For use with 18mm sensors. Available in all 304 stainless steel or with an aluminum head and a stainless steel mounting plate.

Accessories for 18mm Sensors						
Part Number	Price	Description	Mounting Head	Mounting Plate	Drawing Link	Weight lb [g]
<a href="#">OPT2116</a>	\$11.50	Wenglor mounting bracket, right-angle swivel, 360 degree vertical and horizontal adjustment, aluminum, 12mm rod mount. For use with 18mm sensors.	Aluminum	304 Stainless steel	<a href="#">PDF</a>	0.15 [68.0]
<a href="#">OPT2117</a>	\$21.00	Wenglor mounting bracket, right-angle swivel, 360 degree vertical and horizontal adjustment, 304 stainless steel, 12mm rod mount. For use with 18mm sensors.	304 Stainless steel	304 Stainless steel	<a href="#">PDF</a>	0.28 [127.0]



[OPT2116](#), [OPT2117](#)

Note: 304 Stainless steel mounting rods sold separately: [OPT2109](#) (200mm [7.87 in] length), [OPT2110](#) (300mm [11.81 in] length), and [OPT2111](#) (500mm [19.69 in] length).

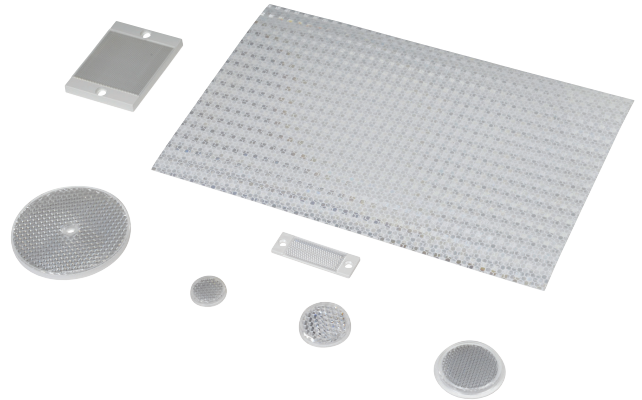
# Reflectors

## RL Series Reflectors for Polarized Reflective Photoelectric Sensors (All Models)

- Suitable for use with polarized light photoelectric sensors
- Shapes and sizes for most applications
- Miniature types for close mounting in multiple sensor installations
- Single hole, dual hole and self-adhesive mounting types available
- Single and 10-packs available

### Installation Notes

- Keep the reflector surface clean to ensure peak detection performance. This is especially true when the maximum sensing range is being used. Clean using a damp cloth.
- When selecting a reflector, it is important to consider the ambient conditions it will be exposed to. Dusty or high humidity conditions may reduce the sensing range as much as 90%.
- Reflectors should be positioned at a 90° angle to the optical axis with a tolerance of ±15°.



Reflector Specifications								
Part number	Price	Drawing Link	Quantity	Dimensions mm [in]	Degree of Protection	Mounting	Materials	
<a href="#">RL102</a>	\$38.00	<a href="#">PDF</a>	10	25	IEC IP67	Customer-supplied adhesive or other mounting method required	Reflective face: PMMA Polymethylmethacrylate (acrylic)  Base material: ABS (Acrylonitrile-butadiene-styren)	
<a href="#">RL102-1</a>	\$4.25		1	[0.98]				
<a href="#">RL103</a>	\$42.50	<a href="#">PDF</a>	10	34.5				
<a href="#">RL103-1</a>	\$4.75		1	[1.36]				
<a href="#">RL104</a>	\$42.50	<a href="#">PDF</a>	10	46				Two 4.3 mm holes
<a href="#">RL104-1</a>	\$4.75		1	[1.81]				
<a href="#">RL105G</a>	\$38.00	<a href="#">PDF</a>	10	95 x 38		Two 6mm holes		
<a href="#">RL105G-1</a>	\$4.25		1	[3.74 x 1.50]				
<a href="#">RL106G</a>	\$42.50	<a href="#">PDF</a>	10	182 x 42		One 5mm hole		
<a href="#">RL106G-1</a>	\$4.75		1	[7.17 x 1.65]				
<a href="#">RL110</a>	\$19.00	<a href="#">PDF</a>	10	84		Two 3mm holes		
<a href="#">RL110-1</a>	\$2.00		1	[3.31]				
<a href="#">RL116</a>	\$19.00	<a href="#">PDF</a>	10	41 x 60		Self-adhesive		Paper (Acrylic tape with micro prism)
<a href="#">RL116-1</a>	\$2.00		1	[3.54 x 2.36]				
<a href="#">RL100DA4</a>	\$38.50	NA	1	200 x 300				
<a href="#">RL100DC4</a>	\$12.00	NA	1	50 x 300				
<a href="#">RL100DQ1</a>	\$8.75	NA	1	100 x 100				
<a href="#">RL111G</a>	\$60.00	<a href="#">PDF</a>	10	22.5 x 47	Two 3mm slots			
<a href="#">RL111G-1</a>	\$7.25		1	[0.89 x 1.85]				
<a href="#">RL112G</a>	\$44.00	<a href="#">PDF</a>	10	19 x 73		Two 4mm slots		
<a href="#">RL112G-1</a>	\$4.75		1	[0.75 x 2.87]				
<a href="#">RL113G</a>	\$53.00	<a href="#">PDF</a>	10	51.4 x 60.3				
<a href="#">RL113G-1</a>	\$6.00		1	[2.02 x 2.37]				

Not recommended for applications involving moist air environments or water immersion.