

C-more 6" Micro-Graphic Panels Overview

Overview

C-more 6" Micro-Graphic panels are joined by a full color, TFT model! C-more 6" Micro-Graphic panels offer touch screen capability and customizable graphics. Two optional Keypad Bezels are available for either Horizontal or Vertical panel orientation.

In addition to the simple panel configuration software, a very helpful feature is the built-in project simulator. The project simulator allows you to view your project on the PC screen as it would appear on the panel and to test all your screens before downloading the project to the panel. You can simulate your entire project at any stage of development. With version 2.50 or later, simulate the function keys and keypad bezel.

Getting started

Installing the software and configuring the C-more 6" Micro-Graphic panel is simple. You will need the following to successfully connect and configure a project for the panel:

- C-more 6" Micro-Graphic panel
- C-more Micro-Graphic Programming Software EA-MG-PGMSW (Downloadable version available from the **AutomationDirect** web site at no charge.)
- C-more Micro-Graphic USB Programming Cable such as USB-CBL-AB6, used to connect between a PC and the Micro-Graphic panel's built-in serial port. The panel will operate in Low-Power mode when powered by the PC and the screen brightness is diminished.
- Power source – An external 12-24 VDC power source is required for normal High-Power operation. Recommended power supplies are AutomationDirect part numbers PSP24-024S or PSP24-024C.
- Personal computer – to run the C-more Micro-Graphic programming software
- Communications Cable (serial) – to connect the C-more Micro-Graphic panel to your controller.

Drivers for your Controller

C-more 6" Micro-Graphic panels have the following drivers available for connection to Productivity Series, CLICK, **Direct**LOGIC and many other devices:

- AutomationDirect Productivity Series
- AutomationDirect CLICK (Modbus)
- **Direct**LOGIC K-sequence, **Direct**LOGIC **Direct**NET, **Direct**LOGIC Modbus (Koyo Addressing)
- Modbus RTU
- Allen Bradley DF1 Full Duplex, Allen Bradley DF1 Half Duplex, Allen Bradley PLC5 DF1, AB DH485
- Omron Host Link (C200 Adapter, C500) Omron FINS serial (CJ1, CS1)
- GE SNPX (90/30, 90/70, Micro 90, VersaMax Micro)
- Mitsubishi Melsec FX
- Siemens PPI
- Entivity Modbus RTU
- GS Drives
- SOLO Temperature Controllers

EA1-S6ML



Shown in Landscape (Horizontal) mode

EA1-S6MLW



Shown in Portrait (Vertical) mode

EA1-T6CL



Shown in Portrait (Vertical) mode



NOTE: EA1-T6CL requires Software and Firmware Version 2.50 or later. Software and Firmware Version 2.0 or later is required with models EA1-S6ML and EA1-S6MLW. Available for free download at www.automationdirect.com.

Features

Bitmaps

- 320 X 240 pixel graphical display supports bitmaps
- Use bitmap images of pushbuttons, switches, indicators, your company logo
- Use provided library of bitmaps
- Create your own library of bitmaps

Text - 40 lines

- 40 lines by 80 characters of static text in Landscape Orientation
- 53 lines by 60 characters of static text in Portrait Orientation
- Look up text, scroll up to 128 characters
- 40 lines by 40 characters of dynamic text, embedded variables, on/off phrases, scroll up to 40 characters
- Scroll text object with up to 128 characters

Beep

- Beep to indicate an alarm
- Beep for a special message
- Beep to verify when button is pressed

Bar graphs

- Line, vertical, horizontal, skinny, fat, multiple

Data entry

- Pop-up numeric key pad on the screen
- Increment/decrement a value by touching arrows
- Two optional keypad bezels, Landscape and Portrait

Recipes

Each recipe button transfers up to 99 values from PLC source registers to PLC destination registers and/or from the recipe table to PLC destination registers.

5 dynamic background colors - EA1-S6ML and EA1-S6MLW

Screen background can be controlled by the program to choose one of five colors depending upon the model. Choices for model EA1-S6ML are green, lime, yellow, amber and red. Model EA1-S6MLW background colors include white, pink1, pink2, pink3 and red. For example, use a red background for an alarm condition or a yellow background on a caution screen that will be easily noticed.



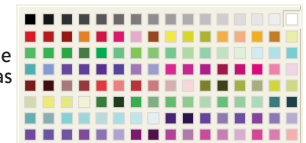
EA1-S6ML



EA1-S6MLW

32K Colors - EA1-T6CL




The TFT panel has a palette of 32K colors available to make full use of color for objects and bitmaps as well as backgrounds.



Up to 999 Screens

C-more Micro-Graphic supports up to 999 screens. Screen quantity is limited by memory usage which is determined by the total bitmaps, objects, etc. that are used.

C-more 6" Micro-Graphic Panels Overview



C-more 6" STN Micro-Graphic Panels			
Part Number		Description	Price
EA1-S6ML		5.7-inch C-more Micro-Graphic Touch Panel with STN LCD monochrome, 320x240 dot display. The panel has red and green LED backlights. Supports 5 selectable backlight colors (Red, Green, Amber, Lime, and Yellow). Includes 5 user-defined function keys with LED indicators. 2 built in serial Ports (RS-232 RJ12 port and 15 pin D-sub RS-232/422/485). NEMA 4/4X, IP65 (when mounted correctly; for indoor use only).	<--->
EA1-S6MLW		5.7-inch C-more Micro-Graphic Touch Panel with STN LCD monochrome, 320x240 dot display. The panel has white and red LED backlights. Supports 5 selectable backlight colors (White, Pink1, Pink2, Pink3, and Red). Includes 5 user-defined function keys with LED indicators. 2 built in serial Ports (RS-232 RJ12 port and 15 pin D-sub RS-232/422/485). NEMA 4/4X, IP65 (when mounted correctly; for indoor use only).	<--->
EA-MG-PGM-CBL		The STN monochrome panels require the USB to serial assembly to connect a personal computer to the panel for programming. (Note: This cable assembly uses the PC's USB port and converts the signals to serial transmissions. The USB port supplies 5 VDC to the Micro-Graphic panel for configuration operations). Assembly includes standard USB A-type connector to B-type connector cable, custom converter, and an RS232C cable with RJ12 modular connector on each end.	<--->



***NOTE: C-more Micro-Graphic panels with the letter "W" in the part number designate units with 5 selectable background colors of White, Pink1, Pink2, Pink3 and Red. Part numbers without the letter "W" are provided with 5 selectable background colors of Green, Red, Amber, Yellow and Lime.**




Note: Software and Firmware Version 2.0 or later is required with models EA1-S6ML and EA1-S6MLW. Available for free download at www.automationdirect.com.




C-more 6" TFT Micro-Graphic Panel			
Part Number		Description	Price
EA1-T6CL		5.7-inch C-more Micro-Graphic Touch Panel with TFT Color LCD, 320 x 240 dot, 32,768 color display with LED backlight. 5 user-defined function keys with LED indicators. Two built-in ports (USB Type-B port and 15-pin D-sub RS-232/422/485 port). Display supports Portrait and Landscape modes. NEMA 4/4X, IP65 (when mounted correctly; for indoor use only).	<--->
USB-CBL-AB3		The C-more Micro-Graphic TFT panel requires a USB A-to-B type cable to connect a personal computer to the panel for programming. (Note: The TFT panel includes a built-in USB to serial converter and the USB driver will appear as a COM port to the PC when properly installed. The USB port supplies 5VDC to the TFT panel so that no external power supply is required for programming.)	<--->
USB-CBL-AB6			<--->
USB-CBL-AB10			<--->
USB-CBL-AB15			<--->



Note: Software and Firmware Version 2.5 or later is required with model EA1-T6CL. Available for free download at www.automationdirect.com.

C-more 6" Micro-Graphic Panels Overview

C-more Micro-Graphic Programming Software		
Part Number	Description	Price
EA-MG-PGMSW	 <p>C-more Micro-Graphic panel Windows-based configuration software. Requires Windows 2000 with Service Pack 4, XP Home or Professional 32-bit with Service Pack 2, Vista or Windows 7 32-bit or 64-bit. Requires USB port connection from PC to touch panel. Includes CD-ROM. Programming cable sold separately. Downloadable version available from the Web site at no charge. Software Help Files included in download. Programs all C-more Micro-Graphic Panels.</p>	<-->

C-more 6" Micro-Graphic Panel Accessories		
Part Number	Description	Price
EA-MG6-BZ2	 <p>For Landscape (Horizontal) Mounted Panels. 20-button keypad bezel with numeric keypad for C-more 6" Micro-Graphic panels, 4 arrow adjust keys, and ESCAPE, MENU, CLEAR and ENTER buttons. Helps to reduce screen wear in heavy-duty applications where operators can use the keypad to enter numeric data. Designed for easy drop-in of the Micro-Graphic panels.</p>	<-->
EA-MG6-BZ2P	 <p>For Portrait (Vertical) Mounted Panels. 21-button keypad bezel with numeric keypad for C-more 6" Micro-Graphic panels, 4 arrow adjust keys, and ESCAPE, MENU, CLEAR and (2) ENTER buttons. Helps to reduce screen wear in heavy-duty applications where operators can use the keypad to enter numeric data. Designed for easy drop-in of the Micro-Graphic panels.</p>	<-->
EA-6-COV2	 <p>Optional clear screen overlay used to protect C-more 6" Micro-Graphic displays from minor scratches and wear. Package contains 3 clear screen overlays.</p>	<-->



For a list of supported protocols and cabling options refer to the 4" & 6" C-more Micro-Graphic Protocols and cabling chart starting on page 11-60.

