

# Accessories

**C0-USER-M \$0.00**

## CLICK PLC Hardware User Manual

Manual covers all CLICK PLC and I/O module installation and wiring, specifications, error codes and trouble shooting guide. Sold separately from hardware.

The CLICK PLC Hardware User Manual can be downloaded free at the *AutomationDirect* Web site, or purchased from the *AutomationDirect* online Web store. [www.automationdirect.com](http://www.automationdirect.com)



**C0-PGMSW \$10.50**

## Programming Software CD-ROM



The programming software can be downloaded free at the *AutomationDirect* Web site, or CD purchased from the *AutomationDirect* online Web store. [www.automationdirect.com](http://www.automationdirect.com)

**EA-MG-PGM-CBL \$43.50**

## PC to Panel Programming Cable Assembly for C-more Micro-Graphic Panels and CLICK PLCs

The 6ft cable assembly connects a personal computer to any C-more Micro-Graphic panel or CLICK PLC for setup and programming.

*Note: This cable assembly uses the PC's USB port and converts the signals to serial transmissions. The USB port supplies 5 VDC to the Micro-Graphic panel for configuration operations.*

Assembly includes standard USB A-type connector to B-type connector cable, custom converter, and a RS232C cable with RJ12 modular connector on each end.

**D2-DSCBL \$18.00**



**Programming Cable for CLICK and DirectLOGIC PLCs** 12ft. (3.66 m) RS232 shielded PC programming cable for CLICK, DL05, DL06, DL105, DL205, D3-350, D4-450, D4-454, and Do-more H2 and T1H series CPUs. 9-pin D-shell female connector to an RJ12 6P6C connector.



Note: If your PC has a USB port but does not have a serial port, you must use programming cable EA-MG-PGM-CBL.

**C0-3TB \$7.25**

## Spare 3-Pole Terminal Block

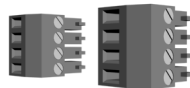
Replacement 3-pole terminal block for the 3-wire RS-485 Port 3 on CLICK Standard and Analog PLCs. Sold in packs of 2.



**C0-4TB \$7.25**

## Spare 24VDC Power Terminal Block

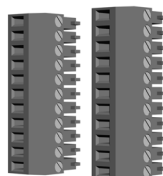
Replacement terminal block for the 24VDC supply power to the PLC. Sold in packs of 2.



**C0-8TB \$12.50**

## Spare 8-Point I/O Terminal Block

Replacement terminal block for the 8-point I/O modules. Sold in packs of 2.



**D2-BAT-1 \$5.50**

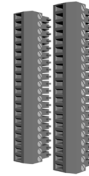
Replacement battery for Standard, Analog, Ethernet Standard and Ethernet Analog PLC units.



**C0-16TB \$17.50**

## Spare 16-Point I/O Terminal Block

Replacement terminal block for the 16-point I/O modules and PLC built-in I/O. Sold in packs of 2.



**DN-WS \$53.00**

## Wire Stripper



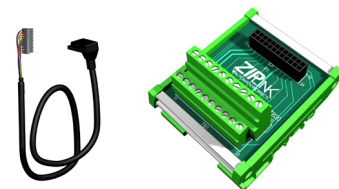
**DN-EB35MN \$18.50**  
DINnectors End Bracket



## C-more and C-more Micro Graphic Operator Interfaces



## ZIPLink Wiring Systems Spare



## Cat5e Ethernet Cable

Cat5e Ethernet Cable sold in lengths of 3ft. to 50ft.





# Wiring System for CLICK PLCs

## Wiring Solutions using the ZIPLink Wiring System

ZIPLinks eliminate the normally tedious process of wiring between devices by utilizing prewired cables and DIN rail mount connector modules. It's as simple as plugging in a cable connector at either end or terminating wires at only one end. Prewired cables keep installation clean and efficient, using half the space at a fraction of the cost of standard terminal blocks.

ZIPLinks are available in a variety of styles to suit your needs, including feedthrough connector module. ZIPLinks are available for all Basic, Standard and Ethernet CLICK PLC units and most discrete and analog I/O modules. Pre-printed I/O-specific adhesive label strips for quick marking of ZIPLink modules are provided with ZIPLink cables.



### Solution 1: CLICK PLC and I/O Modules to ZIPLink Connector Modules

When looking for quick and easy I/O-to-field termination, a ZIPLink connector module used in conjunction with a prewired ZIPLink cable, consisting of an I/O terminal block at one end and a multi-pin connector at the other end, is the best solution.

Use the "CLICK PLC PLC Unit ZIPLink Selector" table and CLICK I/O ZIPLink selector tables located in this section:

1. Locate your PLC or I/O module.
2. Select a ZIPLink Module.
3. Select a corresponding ZIPLink Cable.

### Solution 2: CLICK PLC and I/O Modules to 3rd Party Devices

When wanting to connect I/O to another device within close proximity of the I/O modules, no extra terminal blocks are necessary when using the ZIPLink Pigtail Cables. ZIPLink Pigtail Cables are prewired to an I/O terminal block with color-coded pigtail with soldered-tip wires on the other end.

Use the I/O Modules to 3rd Party Devices selector tables located in the ZIPLink section:

1. Locate your PLC or I/O module.
2. Select a ZIPLink Pigtail Cable that is compatible with your 3rd party device.



### Solution 3: GS Series and DuraPulse Drives Communication Cables

Need to communicate via Modbus RTU to a drive or a network of drives?

ZIPLink cables are available in a wide range of configurations for connecting to PLCs and SureServo, SureStep, Stellar Soft Starter and AC drives. Add a ZIPLink communications module to quickly and easily set up a multi-device network.

Use the Drives Communication selector tables located in the ZIPLink section:

1. Locate your Drive and type of communications.
2. Select a ZIPLink cable and other associated hardware.



### Solution 4: Serial Communications Cables

ZIPLink offers communications cables for use with CLICK PLCs that can also be used with other communications devices. Connections include a 6-pin RJ12 connector which can be used in conjunction with the RJ12 Feedthrough module.

Use the Serial Communications Cables selector table located in the ZIPLink section:

1. Locate your connector type
2. Select a cable.





# Wiring System for CLICK PLCs

CLICK PLC ZIPLink Selector				
PLC		ZIPLink		
PLC Unit	# of Terms	Component	Module Part No.	Cable Part No.
CO-00DD1-D	20	Feedthrough	ZL-RTB20	ZL-CO-CBL20 *
CO-00DD2-D				
CO-00DR-D				
CO-00AR-D				
CO-01DD1-D				
CO-01DD2-D				
CO-01DR-D				
CO-01AR-D				
CO-02DD1-D	No ZIPLinks are available for Analog PLC units.			
CO-02DD2-D				
CO-02DR-D				
CO-10DD1E-D	20	Feedthrough	ZL-RTB20	ZL-CO-CBL20 *
CO-10DD2E-D				
CO-10DRE-D				
CO-10ARE-D				
CO-11DD1E-D				
CO-11DD2E-D				
CO-11DRE-D				
CO-11ARE-D				
CO-12DD1E-D	No ZIPLinks are available for Ethernet Analog PLC units.			
CO-12DD2E-D				
CO-12DRE-D				
CO-12ARE-D				
CO-12DD1E-1-D				
CO-12DD2E-1-D				
CO-12DRE-1-D				
CO-12ARE-1-D				
CO-12DD1E-2-D				
CO-12DD2E-2-D				
CO-12DRE-2-D				
CO-12ARE-2-D				

<sup>1</sup> Note: The CO-04TRS relay output is derated not to exceed 2A per point maximum when used with the ZIPLink wiring system.

<sup>2</sup> Note: Fuses (5 x 20 mm) are not included. See Edison Electronic Fuse section for (5 x 20 mm) fuse. S500 and GMA electronic circuit protection for fast-acting maximum protection. S506 and GMC electronic circuit protection for time-delay performance. Ideal for inductive circuits.

To ensure proper operation, do not exceed the voltage and current rating of ZIPLink module. ZL-RFU20 = 2A per circuit.

CLICK PLC Discrete Input Module ZIPLink Selector				
I/O Module		ZIPLink		
Input Module	# of Terms	Component	Module Part No.	Cable Part No.
CO-08ND3	11	Feedthrough	ZL-RTB20	ZL-CO-CBL11 *
CO-08ND3-1				
CO-08NE3				
CO-08NA				
CO-16ND3	20	Feedthrough	ZL-RTB20	ZL-CO-CBL20 *
		Sensor	ZL-LTB16-24	
CO-16NE3	20	Feedthrough	ZL-RTB20	ZL-CO-CBL20 *
		Sensor	ZL-LTB16-24	

CLICK PLC Discrete Output Module ZIPLink Selector				
I/O Module		ZIPLink		
Output Module	# of Terms	Component	Module Part No.	Cable Part No.
CO-08TD1	11	Feedthrough	ZL-RTB20	ZL-CO-CBL11 *
CO-08TD2				
CO-08TR				
CO-08TA				
CO-16TD1	20	Feedthrough	ZL-RTB20	ZL-CO-CBL20*
		Fuse	ZL-RFU20 <sup>2</sup>	
		Relay (sinking)	ZL-RRL16-24-1	
CO-16TD2	20	Feedthrough	ZL-RTB20	ZL-CO-CBL20 *
		Fuse	ZL-RFU20 <sup>2</sup>	
		Relay (sourcing)	ZL-RRL16-24-2	
CO-04TRS <sup>1</sup>	20	Feedthrough	ZL-RTB20	ZL-CO-CBL20 *

CLICK PLC Combo I/O Module ZIPLink Selector				
I/O Module		ZIPLink		
Combo Module	# of Terms	Component	Module Part No.	Cable Part No.
CO-16CDD1	20	Feedthrough	ZL-RTB20	ZL-CO-CBL20 *
CO-16CDD2				
CO-08CDR	11	Feedthrough	ZL-RTB20	ZL-CO-CBL11 *

CLICK PLC Analog I/O Module ZIPLink Selector				
I/O Module		ZIPLink		
Analog Module	# of Terms	Component	Module Part No.	Cable Part No.
CO-04AD-1	11	Feedthrough	ZL-RTB20	ZL-CO-CBL11 *
CO-04AD-2	11	Feedthrough	ZL-RTB20	ZL-CO-CBL11 *
CO-04RTD	20	No ZIPLinks are available for RTD and thermocouple modules.		
CO-04THM	11			
CO-04DA-1	11	Feedthrough	ZL-RTB20	ZL-CO-CBL11 *
CO-04DA-2	11	Feedthrough	ZL-RTB20	ZL-CO-CBL11 *
CO-4AD2DA-1	20	Feedthrough	ZL-RTB20	ZL-CO-CBL20 *
CO-4AD2DA-2	20	Feedthrough	ZL-RTB20	ZL-CO-CBL20 *

\* Select the cable length by replacing the \* with: Blank = 0.5 m, -1 = 1.0 m, or -2 = 2.0 m.