

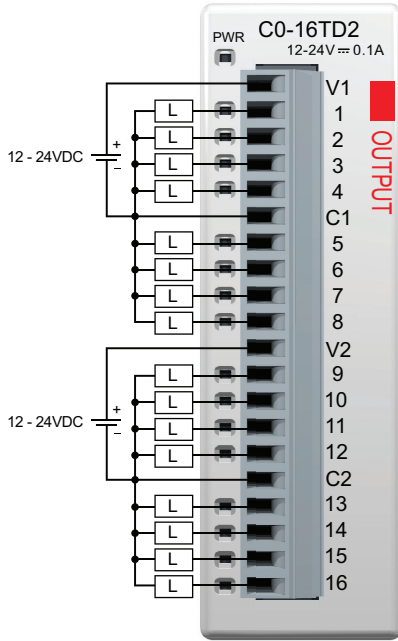
CLICK I/O Module Specifications

CO-16TD2 \$45.00

16-Point Sourcing DC Output Module

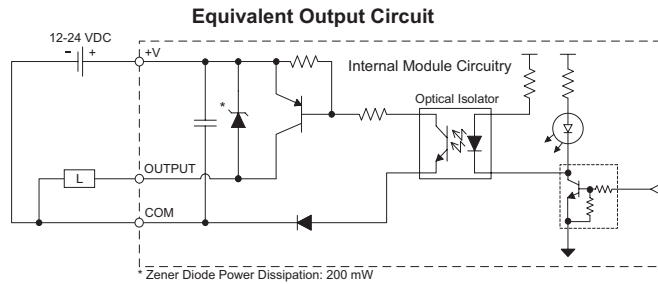
16-pt 12-24 VDC current sourcing output module, 2 commons, isolated, 0.1 A/pt, removable terminal block included (replacement ADC p/n CO-16TB).

Wiring Diagram

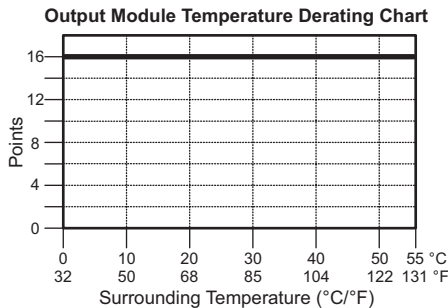


CO-16TD2 Output Specifications	
Outputs per Module	16 (Source)
Operating Voltage Range	12-24 VDC
Output Voltage Range	9.6-30.0 VDC
Maximum Output Current	0.1 A/point , 0.8 A/common
Minimum Output Current	0.2 mA
Maximum Leakage Current	0.1 mA @ 30.0 VDC
On Voltage Drop	0.6 VDC @ 0.1 A
Maximum Inrush Current	150 mA for 10 ms
OFF to ON Response	< 0.5 ms
ON to OFF Response	< 0.5 ms
Status Indicators	Logic Side (16 points, red LED) Power Indicator (green LED)
Commons	2 (8 points/common) Isolated
Bus Power Required (24 VDC)	Max. 80 mA (All Outputs On)
Terminal Block Replacement	ADC p/n CO-16TB
Weight	3.2 oz (90 g)

ZipLink Pre-Wired PLC Connection Cables and Modules for CLICK PLC



20-pin connector cable
 ZL-C0-CBL20 (0.5 m length)
 ZL-C0-CBL20-1 (1.0 m length)
 ZL-C0-CBL20-2 (2.0 m length)



ZL-RTB20 20-pin feed-through connector module



ZL-RFU20 fuse module



ZL-RRL16-24-2 relay module
 Note: 10A/Point (DC)
 8A/Point (AC)
 (Replaceable relays)

