

CLICK I/O Module Specifications

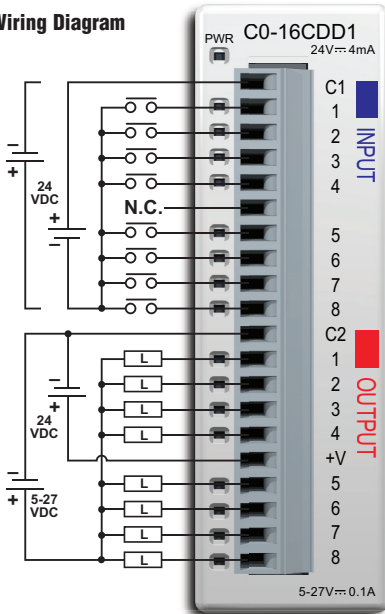
C0-16CDD1

\$59.00

8-Point DC Input and 8-Point DC Sinking Output Module

8-point 24VDC current sinking/sourcing input, 1 common, 8-point 5-27 VDC sinking output, 0.1A/pt., 1 common, non-fused, removable terminal block included. (replacement ADC p/n C0-16TB).

Wiring Diagram

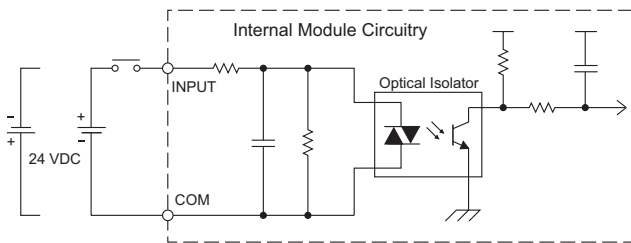


N.C. = Not Connected

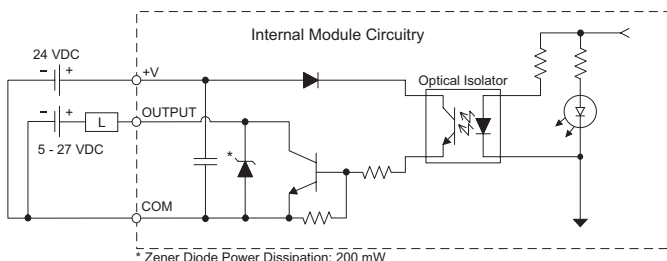


NOTE: When using this module you must also use CLICK programming software and CPU firmware version V1.40 or later.

Equivalent Input Circuit



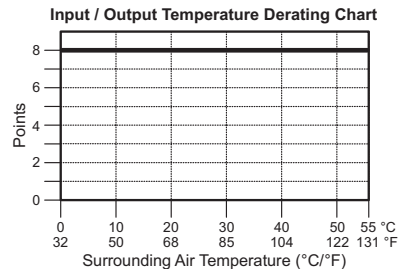
Equivalent Output Circuit



C0-16CDD1 Input Specifications	
Inputs per Module	8 (Source/Sink)
Operating Voltage Range	CE: 24 VDC (-10%/+10%) UL: 24 VDC (-10%/+10%)
Input Voltage Range	21.6 - 26.4 VDC
Input Current	Typ 4.0 mA @ 24 VDC
Maximum Input Current	5.0 mA @ 26.4 VDC
Input Impedance	6.8 kΩ @ 24 VDC
ON Voltage Level	>19.0 VDC
OFF Voltage Level	<7.0 VDC
Minimum ON Current	3.5 mA
Maximum OFF Current	0.5 mA
OFF to ON Response	Max. 10 ms Typ. 2 ms
ON to OFF Response	Max. 10 ms Typ. 3 ms
Status Indicators	Logic Side (8 points, green LED) Power Indicator (green LED)
Commons	1 (8 points/common)

C0-16CDD1 Output Specifications	
Outputs per Module	8 (sink)
Operating Voltage Range	CE: 5-24 VDC (-15%/+20%) UL: 5-27 VDC (-15%/+20%)
Output Voltage Range	4-30 VDC
Maximum Output Current	0.1 A/point, 0.8 A/common
Minimum Output Current	0.2 mA
Maximum Leakage Current	0.1 mA @ 30 VDC
On Voltage Drop	0.5 VDC @ 0.1 A
Maximum Inrush Current	0.15 A for 10 ms
OFF to ON Response	< 0.5 ms
ON to OFF Response	< 0.5 ms
Status Indicators	Logic Side (8 points, red LED)
Commons	1 (8 points/common)
External DC Power Required	24 VDC (-10%/+10%) max. 50 mA (all points on)

C0-16CDD1 General Specifications	
Bus Power Required (24 VDC)	Max. 80 mA (all points on)
Terminal Block Replacement	ADC p/n C0-16TB
Weight	3.2 oz (90 g)



ZipLink Pre-Wired PLC Connection Cables and Modules for CLICK PLC



- 20-pin connector cable
- ZL-C0-CBL20 (0.5 m length)
- ZL-C0-CBL20-1 (1.0 m length)
- ZL-C0-CBL20-2 (2.0 m length)

