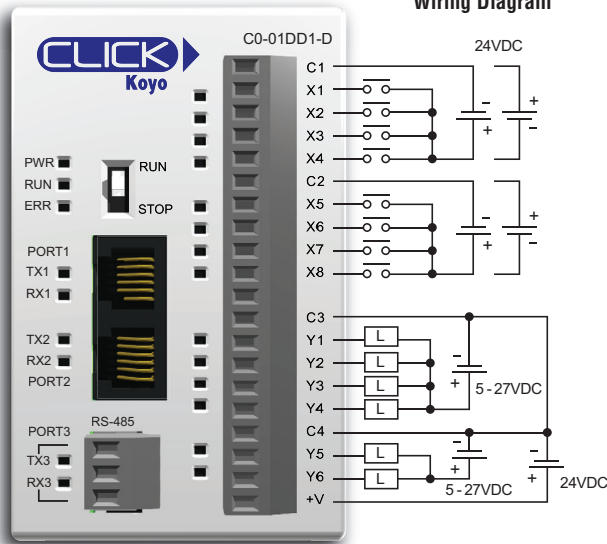


Standard CPU Module Specifications

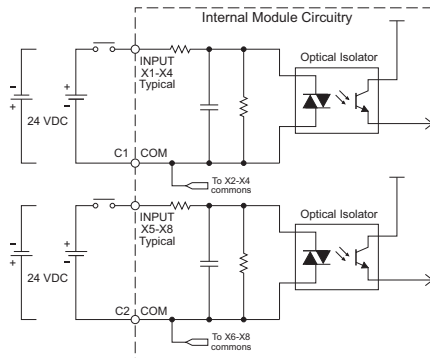
C0-01DD1-D **\$99.00**

8 DC Input/6 Sinking DC Output Micro PLC

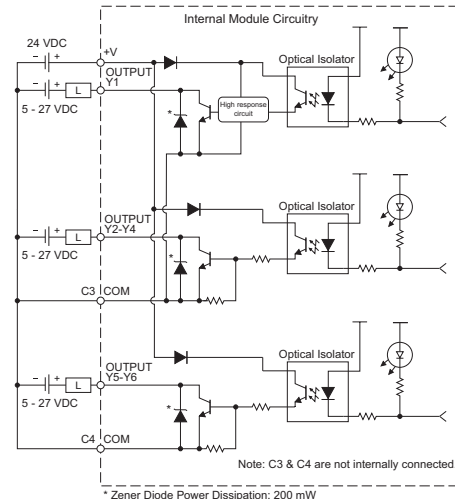


NOTE: When using Standard CPUs, you must use CLICK programming software version V1.20 or later.

Equivalent Input Circuit



Equivalent Output Circuit



* Zener Diode Power Dissipation: 200 mW

C0-01DD1-D Built-in I/O Specifications - Inputs

Inputs per Module	8 (Sink/Source)
Operating Voltage Range	24 VDC
Input Voltage Range	21.6 - 26.4 VDC
Input Current	X1-2: Typ 5 mA @ 24 VDC X3-8: Typ 4 mA @ 24 VDC
Maximum Input Current	X1-2: 6.0 mA @ 26.4 VDC X3-8: 5.0 mA @ 26.4 VDC
Input Impedance	X1-2: 4.7 kΩ @ 24 VDC X3-8: 6.8 kΩ @ 24 VDC
ON Voltage Level	X1-2: > 19 VDC X3-8: > 19 VDC
OFF Voltage Level	X1-2: < 4 VDC X3-8: < 7 VDC
Minimum ON Current	X1-2: 4.5 mA X3-8: 3.5 mA
Maximum OFF Current	X1-2: 0.1 mA X3-8: 0.5 mA
OFF to ON Response	X1-2: Typ 5 μs Max 20 μs X3-8: Typ 2 ms Max 10 ms
ON to OFF Response	X1-2: Typ 5 μs Max 20 μs X3-8: Typ 3 ms Max 10 ms
Status Indicators	Logic Side (8 points, green LED)
Commons	2 (4 points/common) Isolated

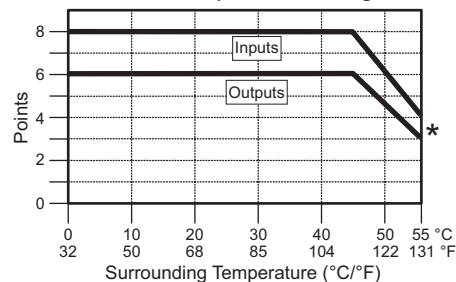
C0-01DD1-D Built-in I/O Specifications - Outputs

Outputs per Module	6 (Sink)
Operating Voltage Range	5-27 VDC
Output Voltage Range	4-30 VDC
Maximum Output Current	0.1 A/point; C3: 0.4 A/common, C4: 0.2 A/common
Minimum Output Current	0.2 mA
Maximum Leakage Current	0.1 mA @ 30.0 VDC
On Voltage Drop	0.5 VDC @ 0.1 A
Maximum Inrush Current	150 mA for 10 ms
OFF to ON Response	Y1: typ 5 μs; max 20 μs Y2-6: < 0.5 ms
ON to OFF Response	Y1: typ 5 μs; max 20 μs Y2-6: < 0.5 ms
Status Indicators	Logic Side (6 points, red LED)
Commons	2 (4 points/com & 2 points/com)
External DC Power Required	20-28 VDC Maximum @ 60 mA (All Points On)

General Specifications

Current Consumption at 24VDC	140 mA
Terminal Block Replacement Part No.	C0-16TB
Weight	5.0 oz (140 g)

C0-01DD1-D Temperature Derating Chart



* Use every other input/output.

ZipLink Pre-Wired PLC Connection Cables and Modules

ZL-RTB20 20-pin feed-through connector module



20-pin connector cable
ZL-C0-CBL20 (0.5 m length)
ZL-C0-CBL20-1 (1.0 m length)
ZL-C0-CBL20-2 (2.0 m length)

