

# BX ME MPUs Accessories

## Replacement Terminal Block Connectors

A 5mm removable screw type 90-degree terminal block is included with each BX ME unit. The power connector replacement

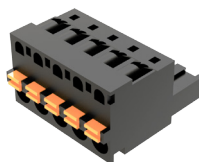
connector specifications are listed in the 2 charts below. Also listed in the tables are an optional spring clamp terminal block

and a screw type 180-degree terminal block that can also be used and are sold separately.

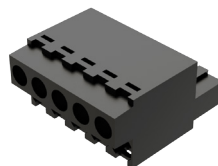
<b>BX-DM1E-M AC Power Supply Connector Specifications</b>			
<b>Part Number</b>	<b><i>BX-RTB05 (included with unit)</i></b>	<b><i>BX-RTB05-1</i></b>	<b><i>BX-RTB05-2</i></b>
<b>Price (each)</b>	\$5.00	\$5.00	\$5.00
Connector Type	Screw Type-90 deg	Spring Clamp Type-180 deg	Screw Type-180 deg
Wire Exit	180 deg	180 deg	180 deg
Pitch	5.0 mm	5.0 mm	5.0 mm
Screw Size	M2.5	N/A	M2.5
Recommended Screw Torque	< 3.98 lb-in (0.45 N·m)	N/A	< 3.98 lb-in (0.45 N·m)
Screwdriver Blade Width	3.5 mm	3.5 mm	3.5 mm
Wire Gauge (Single wire)	28–12 AWG	28–14 AWG	28–14 AWG
Wire Gauge (Two wire)	28–16 AWG	28–16 AWG (Dual Wire Ferrule Required)	28–16 AWG (Dual Wire Ferrule Required)
Wire Strip Length	0.3 in (7.5 mm)	0.37 in (9.5 mm)	0.37 in (9.5 mm)
Equiv. Dinkle P/N	5ESDV-05P-BK	5ESDSR-05P-BK	5ESDSR-05P-BK



***BX-RTB05***

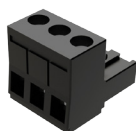


***BX-RTB05-1***

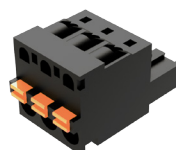


***BX-RTB05-2***

<b>BX-DM1E-M-D DC Power Supply Connector Specifications</b>		
<b>Part Number</b>	<b><i>BX-RTB03</i></b>	<b><i>BX-RTB03-1</i></b>
<b>Price (each)</b>	\$3.00	\$3.00
Connector Type	Screw Type-90 deg	Spring Clamp Type-180 deg
Wire Exit	180 deg	180 deg
Pitch	5.0 mm	5.0 mm
Screw Size	M2.5	N/A
Recommended Screw Torque	< 3.98 lb-in (0.45 N·m)	N/A
Screwdriver Blade Width	3.5 mm	3.5 mm
Wire Gauge (Single wire)	28–12 AWG	28–14 AWG
Wire Gauge (Two wire)	28–16 AWG	28–16 AWG (Dual Wire Ferrule Required)
Wire Strip Length	0.3 in (7.5 mm)	0.37 in (9.5 mm)
Equiv. Dinkle P/N	5ESDV-03P-BK	5ESDSR-03P-BK



***BX-RTB03***



***BX-RTB03-1***