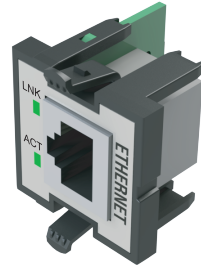
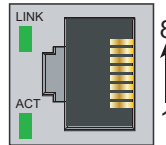


BRX Pluggable Option Modules (POM)

BX-P-ECOMLT \$69.00

The Ethernet LT POM can be connected to the Do-more! Designer programming software or HMI's that support the Do-more!, Modbus, or K-sequence protocol. This POM functions only as a server device.

Pin #	Signal
1	TXD+ Transmit Data
2	TXD- Transmit Data
3	RXD+ Receive Data
4	N/C
5	N/C
6	RXD- Receive Data
7	N/C
8	N/C



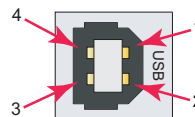
BX-P-ECOMLT Specifications

Description	Standard transformer isolated Ethernet port with built-in surge protection.
Transfer Rate	1 Mbps throughput max
Port Status LED	LINK LED is solid when network is established. ACT LED flashes when port is active.
Supported Protocols	Do-more! Protocol (Server) Modbus TCP (Server) K-sequence (Server) Programming/Monitoring
Cable Recommendation	C5E-STxxx-xx from AutomationDirect.com
Port Type	RJ45, Category 5, Auto Crossover
Ethernet Port Numbers:	
Do-more! Protocol	28784, UDP
Modbus	502, TCP
K-sequence	28784, UDP
Programming/Monitoring	28784, UDP
Hot Swappable	Yes

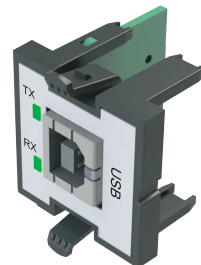
BX-P-USB-B \$27.00

The USB POM can only be connected to the Do-more! Designer programming software.

Pin #	Signal
1	+5
2	-Data
3	+Data
4	GND



Mating face of USB type B female



BX-P-USB-B Specifications

Description	USB Type B Port for programming.
USB Specification Version	USB 2.0
Port Status LED	LED flashes when port is active
Cable Recommendation	USB-CBL-ABxx from AutomationDirect.com
Hot Swappable	Yes