

bimed Cable Entry System



Overview

Frames - BPA Cable Entry

The BPA cable entry systems allow a cable to be installed through an enclosure or other bulkhead surfaces, with the added benefit that pre-made, terminated cables can be installed without disassembling the connectors. The BPA Series is a split-frame system that enables the quick and simple installation of up to 10 cables in a single frame. The grommets are pyramidal and their outer surface shapes are conical. This conicity ensures high strain relief when they are compressed into their conical seats. The BPA cable systems robust multi-part frame design gives better mechanical stability while achieving a high degree of IP66 and UL Type 12, 13, and 4X environmental protection.

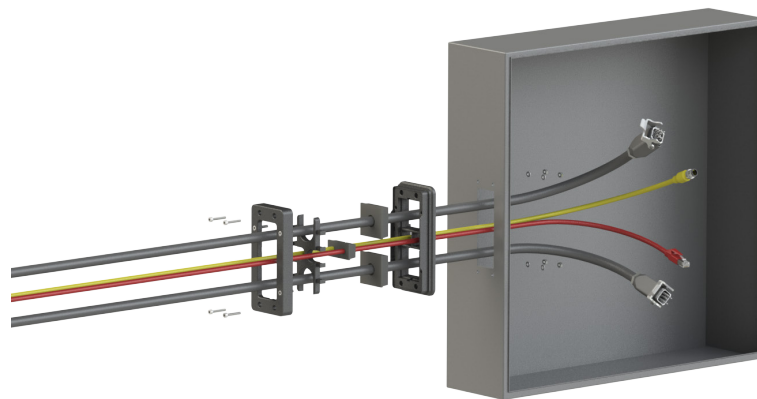


Features

- Uninterrupted cable guidance
- Easy assembly
- Integrated strain relief
- High protection class IP66, UL Type 12, 13, 4X
- Matching grommets: BPA series
- 2-year warranty
- Operating temperature: -40 to +176 °F [-40 to +80 °C]
- Flammability: HB (According to UL94)
- Halogen-free

Agency Approvals

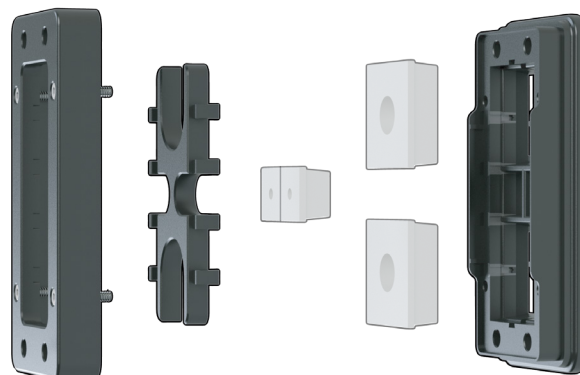
- cURus, meets UL 508A under file E467237



bimed Cable Entry System

Frames - BPA Series

The BPA series is a multi-part split-frame system that clamps together with a grommet block and uses the BPA series grommets to provide a high-density cable entry point with an IP66, UL Type 12,13, and 4X environmental rating. The system allows for easy installation of pre-assembled cables as well as non-terminated cable. The BPA series grommets are sold separately to allow the correct opening size for each cable. Depending on the grommet and frame combination used, up to 10 cables can be quickly and simply installed in a single frame. The grommet block is included with each frame.



Frames - BPA Series						
Part Number	Price	Qty	Number Of Openings Small / Large	Color	Drawing Link	Material
BPA-S-04-1-0	\$19.50	1	2/2	Gray	PDF	Frame and Grommet Block: PA Glass Fiber Reinforced
BPA-S-04-2-0	\$19.50		2/2	Black	PDF	
BPA-S-07-1-0	\$19.50		6/1	Gray	PDF	
BPA-S-07-2-0	\$19.50		6/1	Black	PDF	
BPA-S-10-1-0	\$19.50		10/0	Gray	PDF	
BPA-S-10-2-0	\$19.50		10/0	Black	PDF	

Note: Mounting hardware is included with frames. Screw size: M4x0,7x20 mm fitted with M3 Allen Head [0.40 Nm]



[BPA-S-04-1-0](#)



[BPA-S-04-2-0](#)



[BPA-S-07-1-0](#)



[BPA-S-10-1-0](#)



[BPA-S-10-2-0](#)



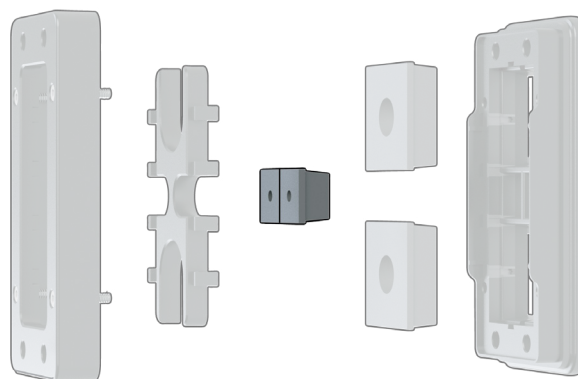
[BPA-S-07-2-0](#)

bimed Cable Entry System



Grommets (Small) BPA Series

The BPA series grommets are perfect for cable entries of round cables. The small version can accept cable diameters between 0.138 to 0.61 inches [3.5 to 15.5 mm].



Grommets (Small) - BPA Series							
Part Number	Price	Qty	For Use With Cable Ø mm [inches]	Number Of Openings	Color	Drawing Link	Material
Small Grommets							
<u>BPA-S-0016C</u>	\$6.75	4	3.5 to 5.5 [0.138 to 0.217]	1	Black	<u>PDF</u>	CR (Chloroprene)
<u>BPA-S-0017C</u>	\$6.75		5.5 to 7.5 [0.217 to 0.295]			<u>PDF</u>	
<u>BPA-S-0018C</u>	\$6.75		7.5 to 9.5 [0.295 to 0.374]			<u>PDF</u>	
<u>BPA-S-0019C</u>	\$6.75		9.5 to 11.5 [0.374 to 0.453]			<u>PDF</u>	
<u>BPA-S-0020C</u>	\$6.75		11.5 to 13.5 [0.453 to 0.531]			<u>PDF</u>	
<u>BPA-S-0021C</u>	\$6.75		13.5 to 15.5 [0.531 to 0.61]			<u>PDF</u>	
<u>BPA-S-0029C</u>	\$6.75		Blank			0	

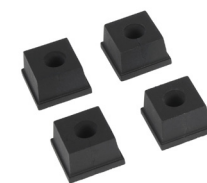
Notes: Ingress protection is met when used with cable of specified diameter.



[BPA-S-0016C](#)



[BPA-S-0017C](#)



[BPA-S-0018C](#)



[BPA-S-0020C](#)



[BPA-S-0021C](#)



[BPA-S-0029C](#)

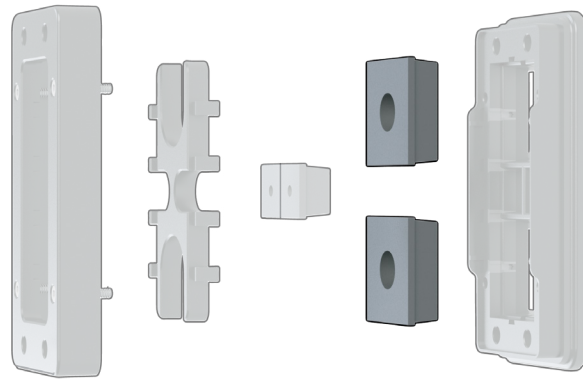


[BPA-S-0019C](#)

bimed Cable Entry System

Grommets (Large) BPA Series

The BPA series grommets are perfect for cable entries of round cables. The large version can accept cable diameters between 0.61 to 1.161 inches [15.5 to 29.5 mm].



Grommets (Large) - BPA Series							
Part Number	Price	Qty	For Use With Cable Ø mm [Inches]	Number Of Openings	Color	Drawing Link	Material
Large Grommets							
BPA-S-0022C	\$13.00	4	15.5 to 17.5 [0.61 to 0.689]	1	Black	PDF	CR (Chloroprene)
BPA-S-0023C	\$13.00		17.5 to 19.5 [0.689 to 0.768]			PDF	
BPA-S-0024C	\$13.00		19.5 to 21.5 [0.768 to 0.846]			PDF	
BPA-S-0025C	\$13.00		21.5 to 23.5 [0.846 to 0.925]			PDF	
BPA-S-0026C	\$13.00		23.5 to 25.5 [0.925 to 1.004]			PDF	
BPA-S-0027C	\$13.00		25.5 to 27.5 [1.004 to 1.083]			PDF	
BPA-S-0028C	\$13.00		27.5 to 29.5 [1.083 to 1.161]			PDF	
BPA-S-0030C	\$13.00		Blank	0		PDF	

Notes: Ingress protection is met when used with cable of specified diameter.

