

# Triton Series – Fiberglass Enclosures

## NEMA Type 1 and 3R Single-Door with Twist-Lock Latches



**T483612RT**

### Construction

- Hot compression molded fiberglass reinforced polyester, hand layup FRP
- Poured polyurethane seamless gasket provides watertight, dust-tight environmental seal
- 304 stainless steel used on all external hardware
- Panel mounting capability for fixed rear panel
- Bosses with threaded brass inserts accept 3/8-16 screws
- Integral mounting feet
- Rounded edges, minimal protrusions or exposed pocket areas for accumulation of dust or debris
- Rain shield protection against incidental water ingress
- Dust-tight, watertight, non-corrosive environmental design
- Door has stainless steel hinge and twist-lock latches for easy entry
- Built-in padlock hasp
- Non-conductive, UV resistant
- 216 lb-in impact resistance per UL746C
- Smooth surface, no color variations, swirls or color pockets, no voids
- Color: Gray

### Listings

- UL/cUL File E64358
- NEMA Ratings 1, 3R (UL508A, UL50 & UL50e)
- CSA Std. C22.2 File LR069014
- Temperature Range (-76°F to +274°F) (-60°C to +134°C)
- Flammability Rating UL94-5V
- Self Extinguishing Non-Halogenated, Non-flame propagating
- NFPA No. 101 Flame Spread Class A (1)
- Impact Rating IK10
- Certifications UL, IEC, CSA, REACH, RoHS
- Outdoor UV Exposure (UL 746C) (f1) Rated



Enclosure Shipping Schedule			
Same day	1 - 5 days	1 - 15 days	1 - 20 days

Color indicates shipping lead time in business days.

Triton Series Fiberglass Enclosures - NEMA Type 1 and 3R Single-Door with Twist-Lock Latches							
Part Number	Price	Enclosure Overall Size HxWxD	Wt. (lb)	No. Latches	Carbon Steel Subpanel	Aluminum Subpanel	
T242410RT	\$541.00	27.00 x 25.24 x 11.90 [686 x 641 x 302]	36.2	2	BPT2424CS	BPT2424A	
T30208RT	\$544.00	32.86 x 20.99 x 9.89 [835 x 533 x 251]	30.9	2	BPT3020CS	BPT3020A	
T302010RT	\$646.00	32.86 x 20.99 x 11.89 [835 x 533 x 302]	31.5	2	BPT3020CS	BPT3020A	
T302410RT	\$579.00	33.41 x 26.32 x 11.95 [849 x 668 x 304]	45.7	2	BPT3024CS	BPT3024A	
T302412RT	\$613.00	33.41 x 26.32 x 13.79 [849 x 668 x 350]	44.9	2	BPT3024CS	BPT3024A	
T36308RT	\$783.00	39.31 x 32.50 x 10.05 [999 x 826 x 255]	52.7	3	BPT3630CS	BPT3630A	
T363010RT	\$791.00	39.31 x 32.50 x 12.05 [999 x 826 x 306]	57.1	3	BPT3630CS	BPT3630A	
T363012RT	\$834.00	39.31 x 32.50 x 14.05 [999 x 826 x 357]	59.7	3	BPT3630CS	BPT3630A	
T483612RT	\$1,523.00	51.29 x 36.62 x 14.43 [1303 x 930 x 367]	85.6	3	BPT4836CS	BPT4836A	
T483616RT	\$1,663.00	51.29 x 36.62 x 18.43 [1303 x 930 x 468]	94.2	3	BPT4836CS	BPT4836A	

Notes: Subpanels must be ordered separately.  
Dimensions in inches [millimeters].

See our website: [www.AutomationDirect.com](http://www.AutomationDirect.com) for complete engineering drawings.

# Triton Series – Fiberglass Enclosures

## NEMA Type 1, 3, 3R, 4X and 12 - Single-Door with Twist-Lock Latches



T483612HWT

### Construction

- Hot compression molded fiberglass reinforced polyester, hand layup FRP
- Poured polyurethane seamless gasket provides watertight, dust-tight environmental seal
- 304 stainless steel used on all external hardware
- Panel mounting capability for fixed rear panel
- Bosses with threaded brass inserts accept 3/8-16 screws
- Integral mounting feet
- Rounded edges, minimal protrusions or exposed pocket areas for accumulation of dust or debris
- Dust-tight, watertight, non-corrosive environmental design
- Stainless steel, hinged door with twist-lock latches for easy entry
- Built-in padlock hasp on enclosure sizes 20x16 and larger
- Non-conductive, UV resistant
- 216 lb-in impact resistance per UL746C
- Smooth surface, no color variations, swirls or color pockets, no voids
- Color: Gray

### Listings

- UL/cUL File E64358
- NEMA Ratings 1, 3, 3R, 4X, 12 (UL508A, UL50 & UL50e)
- CSA Std. C22.2 File LR069014
- IEC 60529 Ratings IP66
- UL 1741 File E333478
- Temperature Range (-76°F to +274°F) (-60°C to +134°C)
- Flammability Rating UL94-5V
- Self Extinguishing non-Halogenated, Non-flame propagating
- NFPA No. 101 Flame Spread Class A (1)
- Impact Rating IK10
- Certifications UL, IEC, CSA, REACH, RoHS
- Outdoor UV Exposure (UL 746C) (f1) Rated



Enclosure Shipping Schedule			
Same day	1 - 5 days	1 - 15 days	1 - 20 days

Color indicates shipping lead time in business days.

Triton Series Fiberglass Enclosures - NEMA Type 1, 3, 3R, 4X, and 12 - Single-Door with Twist-Lock Latches						
Part Number	Price	Enclosure Overall Size HxWxD	Wt. (lb)	No. Latches	Carbon Steel Subpanel	Aluminum Subpanel
T16107HWT	\$369.00	18.75 x 10.96 x 9.03 [476 x 278 x 229]	8.9	2	BPT1610CS	BPT1610A
T201612HWT	\$452.00	22.75 x 16.87 x 13.77 [578 x 429 x 350]	20.5	2	BPT2016CS	BPT2016A
T24126HWT	\$500.00	26.95 x 13.72 x 7.98 [685 x 348 x 203]	23.7	2	BPT2412CS	BPT2412A
T241210HWT	\$486.00	26.95 x 13.72 x 11.99 [685 x 348 x 304]	22.7	2	BPT2412CS	BPT2412A
T24208HWT	\$552.00	27.00 x 21.24 x 9.90 [686 x 539 x 252]	26.9	4	BPT2420CS	BPT2420A
T242410HWT	\$639.00	27.00 x 25.24 x 11.90 [686 x 641 x 302]	32.6	4	BPT2424CS	BPT2424A
T242412HWT	\$728.00	27.00 x 25.24 x 13.90 [686 x 641 x 353]	37.2	4	BPT2424CS	BPT2424A
T30206HWT	\$580.00	32.86 x 20.99 x 7.89 [835 x 533 x 200]	27.9	5	BPT3020CS	BPT3020A
T30208HWT	\$589.00	32.86 x 20.99 x 9.89 [835 x 533 x 251]	30.9	5	BPT3020CS	BPT3020A
T302010HWT	\$714.00	32.86 x 20.99 x 11.89 [835 x 533 x 302]	31.5	5	BPT3020CS	BPT3020A
T302012HWT	\$723.00	32.86 x 20.99 x 13.89 [835 x 533 x 353]	34.7	5	BPT3020CS	BPT3020A
T30247HWT	\$661.00	33.41 x 26.32 x 8.81 [849 x 668 x 224]	42.8	5	BPT3024CS	BPT3024A
T302410HWT	\$669.00	33.41 x 26.32 x 11.95 [849 x 668 x 304]	40.3	5	BPT3024CS	BPT3024A
T302412HWT	\$704.00	33.41 x 26.32 x 13.79 [849 x 668 x 350]	44.9	5	BPT3024CS	BPT3024A
T36308HWT	\$857.00	39.31 x 32.50 x 10.05 [999 x 826 x 255]	53.0	5	BPT3630CS	BPT3630A
T363010HWT	\$866.00	39.31 x 32.50 x 12.05 [999 x 826 x 306]	57.1	5	BPT3630CS	BPT3630A
T363012HWT	\$928.00	39.31 x 32.50 x 14.05 [999 x 826 x 357]	59.7	5	BPT3630CS	BPT3630A
T483612HWT	\$1,548.00	51.29 x 36.62 x 13.93 [1303 x 930 x 354]	89.4	10	BPT4836CS	BPT4836A
T483616HWT	\$1,712.00	51.29 x 36.62 x 17.93 [1303 x 930 x 456]	94.2	10	BPT4836CS	BPT4836A
T603612HWT	\$2,006.00	63.50 x 36.50 x 14.12 [1613 x 927 x 359]	108.4	11	BPT6036CS	BPT6036A
T603616HWT	\$2,195.00	63.50 x 36.50 x 18.12 [1613 x 927 x 460]	113.4	11	BPT6036CS	BPT6036A

Notes: Subpanels must be ordered separately. Dimensions in inches [millimeters].

# Triton Series – Fiberglass Enclosures

NEMA Type 1, 3, 3R, 4X and 12 - Single-Door with Acrylic Window and Twist-Lock Latches



**TW483612HWT**

## Construction

- Hot compression molded fiberglass reinforced polyester, hand layup FRP
- Poured polyurethane seamless gasket provides watertight, dust-tight environmental seal
- 304 stainless steel used on all external hardware
- Panel mounting capability for fixed rear panel
- Bosses with threaded brass inserts for 3/8-16 screws
- Integral mounting feet
- Rounded edges, minimal protrusions or exposed pocket areas for accumulation of dust or debris
- Dust-tight, watertight, non-corrosive environmental design
- Stainless steel, hinged door with twist-lock latches for easy entry
- Non-conductive, UV resistant
- 216 lb-in impact resistance per UL746C
- Smooth surface, no color variations, swirls or color pockets, no voids
- Scratch- and abrasion-resistant, UVA acrylic flush-bonded window
- Color: Gray

## Listings

- UL/cUL File E64358
- NEMA Ratings 1, 3, 3R, 4X, 12 (UL508A, UL50 & UL50e)
- CSA Std. C22.2 File LR069014
- UL 1741 File E333478
- Temperature Range (-76°F to +274°F) (-60°C to +134°C)
- Flammability Rating UL94-5V
- Window Temperature Range (-26°F to +170°F) (-32°C to +76°C)
- Window Flammability Rating UL94-HB
- Self Extinguishing Non-Halogenated, Non-flame propagating
- NFPA No. 101 Flame Spread Class A (1)
- Impact Rating IK10
- Certifications UL, CSA, CE, REACH, RoHS
- Outdoor UV Exposure (UL 746C) (f1) Rated



Enclosure Shipping Schedule			
Same day	1 - 5 days	1 - 15 days	1 - 20 days

Color indicates shipping lead time in business days.

Triton Series Fiberglass Enclosures - NEMA Type 1, 3, 3R, 4X and 12 - Single-Door with Acrylic Window and Twist-Lock Latches						
Part Number	Price	Enclosure Overall Size HxWxD	Wt. [lb]	No. Latches	Carbon Steel Subpanel	Aluminum Subpanel
TW201610HWT	\$819.00	22.75 x 16.87 x 11.77 [578 x 429 x 299]	19.9	2	BPT2016CS	BPT2016A
TW241210HWT	\$917.00	26.95 x 13.72 x 11.99 [685 x 348 x 304]	19.8	2	BPT2412CS	BPT2412A
TW24208HWT	\$990.00	27.00 x 21.24 x 9.90 [686 x 539 x 252]	47.1	4	BPT2420CS	BPT2420A
TW242410HWT	\$1,138.00	27.00 x 25.24 x 11.90 [686 x 641 x 302]	34.1	4	BPT2424CS	BPT2424A
TW30208HWT	\$1,179.00	32.86 x 20.99 x 9.89 [835 x 533 x 251]	31.9	5	BPT3020CS	BPT3020A
TW302410HWT	\$1,221.00	33.41 x 26.32 x 11.95 [849 x 668 x 304]	45.2	5	BPT3024CS	BPT3024A
TW363012HWT	\$1,736.00	39.31 x 32.50 x 14.05 [999 x 826 x 357]	59.7	5	BPT3630CS	BPT3630A
TW483612HWT	\$2,996.00	51.29 x 36.62 x 13.93 [1303 x 930 x 354]	85.6	10	BPT4836CS	BPT4836A

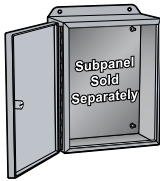
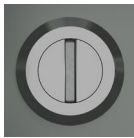
Notes: Subpanels must be ordered separately.  
Dimensions in inches [millimeters].

# Triton Series – Fiberglass Enclosures

## Single-Door with Slotted Security Latch



**T24208HWTSL**



### Construction

- Hot compression molded fiberglass reinforced polyester, hand layup FRP
- Poured polyurethane seamless gasket provides watertight, dust-tight environmental seal
- 304 stainless steel used on all external hardware
- Panel mounting capability for fixed rear panel
- Bosses with threaded brass inserts accept 3/8-16 screws
- Integral mounting feet
- Rounded edges, minimal protrusions or exposed pocket areas for accumulation of dust or debris
- Dust-tight, watertight, non-corrosive environmental design
- Full length, stainless steel hinges
- One slotted security latch requires a screwdriver to open. The remaining latches are padlockable quick-release latches
- Built-in padlock hasp on enclosure sizes 20 x 16 and larger
- Non-conductive, UV resistant
- 216 lb-in impact resistance per UL746C
- Smooth surface, no color variations, swirls or color pockets, no voids
- Color: Gray

### Listings

- cULus File E64358
- NEMA Ratings 1, 3, 3R, 4X, 12 [UL508A, UL50 & UL50e]
- IEC 60529 Ratings IP66
- Temperature Range [-76°F to +274°F] [-60°C to +134°C]
- Flammability Rating UL94-5V
- Self Extinguishing non-Halogenated, Non-flame propagating
- NFPA No. 101 Flame Spread Class A [1]
- Impact Rating IK10
- Certifications cULs, IEC, REACH, RoHS
- Outdoor UV Exposure [UL 746C] [f1] Rated



Enclosure Shipping Schedule			
Same day	1 - 5 days	1 - 15 days	1 - 20 days

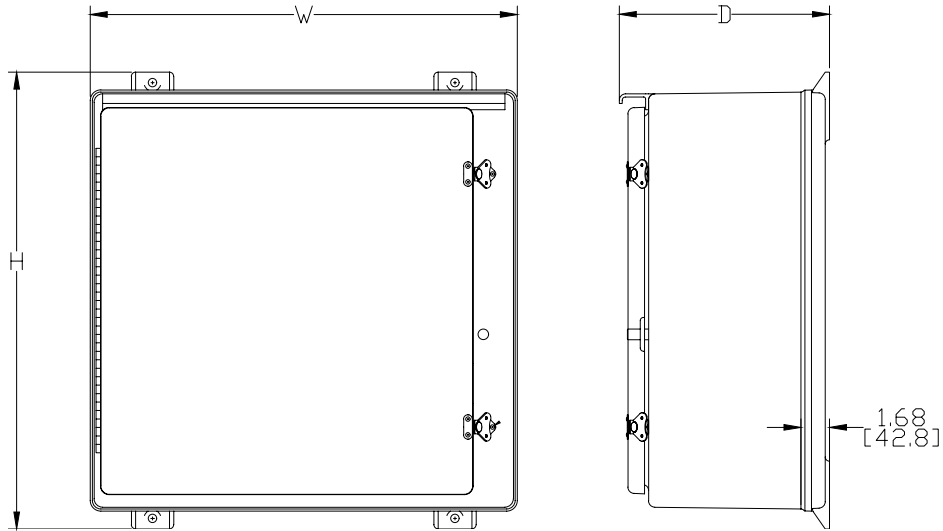
Color indicates shipping lead time in business days.

Triton Series Fiberglass Enclosures - Single-Door with Slotted Security Latch						
Part Number	Price	Enclosure Overall Size HxWxD	Wt. [lb]	No. Latches	Carbon Steel Subpanel	Aluminum Subpanel
<b>T24208HWTSL</b>	\$658.00	27.00 x 21.24 x 9.90 [686 x 539 x 252]	26.9	4	<b>BPT2420CS</b>	<b>BPT2420A</b>
<b>T242410HWTSL</b>	\$762.00	27.00 x 25.24 x 11.90 [686 x 641 x 302]	32.6	4	<b>BPT2424CS</b>	<b>BPT2424A</b>
<b>T242412HWTSL</b>	\$867.00	27.00 x 25.24 x 13.90 [686 x 641 x 353]	37.2	4	<b>BPT2424CS</b>	<b>BPT2424A</b>
<b>T30208HWTSL</b>	\$702.00	32.86 x 20.99 x 9.89 [835 x 533 x 251]	30.9	5	<b>BPT3020CS</b>	<b>BPT3020A</b>
<b>T302410HWTSL</b>	\$797.00	33.41 x 26.32 x 11.95 [849 x 668 x 304]	40.3	5	<b>BPT3024CS</b>	<b>BPT3024A</b>
<b>T363010HWTSL</b>	\$1,032.00	39.31 x 32.50 x 12.05 [999 x 826 x 306]	57.1	5	<b>BPT3630CS</b>	<b>BPT3630A</b>
<b>T363012HWTSL</b>	\$1,107.00	39.31 x 32.50 x 14.05 [999 x 826 x 357]	59.7	5	<b>BPT3630CS</b>	<b>BPT3630A</b>

**Notes:** Subpanels must be ordered separately.  
Dimensions in inches [millimeters].

# Triton Series – Fiberglass Enclosures

## Dimensions for Triton Series Enclosures



**Note: Mounting hole is .50" [1.27mm]**

*See our website: [www.AutomationDirect.com](http://www.AutomationDirect.com) for complete engineering drawings.*

# Subpanels for Triton Series Fiberglass Enclosures

## Carbon steel subpanels

- Material: Carbon steel
- Finish: White polyester powder



Subpanel Part Number	Price	Subpanel Size HxWxD	Enclosure Nominal Size HxW	Panel Type	Formed Height (F)	Wt. (lb)
<b>BPT1610CS</b>	\$25.50	13.00 x 8.50 x 0.105 [330 x 216 x 2.7]	16 x 10	Flat	N/A	3.3
<b>BPT2016CS</b>	\$43.50	17.00 x 13.00 x 0.105 [432 x 330 x 2.7]	20 x 16	Flat		6.7
<b>BPT2412CS</b>	\$42.00	21.00 x 9.00 x 0.105 [533 x 229 x 2.7]	24 x 12	Flat		8.7
<b>BPT2420CS</b>	\$86.00	21.00 x 17.00 x 0.105 [533 x 432 x 2.7]	24 x 20	Flat		11
<b>BPT2424CS</b>	\$145.00	21.00 x 21.00 x 0.105 [533 x 533 x 2.7]	24 x 24	Flat		13
<b>BPT3020CS</b>	\$109.00	27.00 x 17.00 x 0.105 [686 x 432 x 2.7]	30 x 20	Flat		14
<b>BPT3024CS</b>	\$134.00	27.00 x 21.00 x 0.105 [686 x 533 x 2.7]	30 x 24	Flat		17
<b>BPT3630CS</b>	\$210.00	33.00 x 27.00 x 0.105 [838 x 686 x 2.7]	36 x 30	Flat		27
<b>BPT4836CS</b>	\$304.00	33.00 x 45.00 x 0.105 [838 x 1143 x 2.7]	48 x 36	Formed	0.50 in	41
<b>BPT6036CS</b>	\$377.00	57.00 x 33.00 x 0.105 [1448 x 838 x 2.7]	60 x 36	Formed		60
<b>BP2016CD</b>	\$132.00	16.88 x 13.38 x 0.130 [429 x 340 x 3.3]	20 x 16	Formed		7.3
<b>BP2412CD</b>	\$122.00	20.88 x 9.38 x 0.13 [530 x 238 x 3.3]	24 x 12	Formed	0.81 in	6.6
<b>BP2424CD</b>	\$170.00	20.88 x 21.38 x 0.130 [530 x 543 x 3.3]	24 x 24	Formed		14
<b>BP3024CD</b>	\$179.00	26.88 x 21.38 x 0.130 [683 x 543 x 3.3]	30 x 24	Formed		19
<b>BP3630CD</b>	\$229.00	32.88 x 27.38 x 0.135 [835 x 695 x 3.4]	36 x 30	Formed		28

**Note: Dimensions in inches [millimeters].**

## Aluminum subpanels

- Material: 3003H14 aluminum
- Finish: Mill

Subpanel Part Number	Price	Subpanel Size HxWxD	Enclosure Nominal Size HxW	Panel Type	Formed Height (F)	Wt. (lb)
<b>BPT1610A</b>	\$39.00	13.00 x 8.50 x 0.081 [330 x 216 x 2.0]	16 x 10	Flat	N/A	1.0
<b>BPT2016A</b>	\$43.50	17.00 x 13.00 x 0.081 [432 x 330 x 2.0]	20 x 16	Flat		2.0
<b>BPT2412A</b>	\$42.00	21.00 x 9.00 x 0.081 [533 x 229 x 2.0]	24 x 12	Flat		4.5
<b>BPT2420A</b>	\$86.00	21.00 x 17.00 x 0.129 [533 x 432 x 3.3]	24 x 20	Flat		4.5
<b>BPT2424A</b>	\$105.00	21.00 x 21.00 x 0.129 [533 x 533 x 3.3]	24 x 24	Flat		5.5
<b>BPT3020A</b>	\$109.00	27.00 x 17.00 x 0.129 [686 x 432 x 3.3]	30 x 20	Flat		5.8
<b>BPT3024A</b>	\$134.00	27.00 x 21.00 x 0.129 [686 x 533 x 3.3]	30 x 24	Flat		7.0
<b>BPT3630A</b>	\$210.00	33.00 x 27.00 x 0.129 [838 x 686 x 3.3]	36 x 30	Flat		11
<b>BPT4836A</b>	\$304.00	33.00 x 45.00 x 0.129 [838 x 1143 x 3.3]	48 x 36	Formed	0.50 in	22
<b>BPT6036A</b>	\$377.00	57.00 x 33.00 x 0.129 [1448 x 838 x 3.3]	60 x 36	Formed		23

**Note: Dimensions in inches [millimeters].**

Enclosure Shipping Schedule			
Same day	1 - 5 days	1 - 15 days	1 - 20 days

Color indicates shipping lead time in business days.

See our website: [www.AutomationDirect.com](http://www.AutomationDirect.com) for complete engineering drawings.

# Enclosure Accessories - Hole Seals and Plugs



**AttaBox**  
A ROBROY ENCLOSURES™ BRAND

## Hole Plugs for Non-Metal Enclosures

Designed to seal extra pushbutton holes, conduit openings, and knockout openings in AttaBox fiberglass enclosures from dirt, dust, oil, and water. Conduit hole sizes are nominal trade sizes, not actual hole sizes. (Example: 1 in. conduit actual diameter = 1.315 in.)

Enclosure Shipping Schedule			
Same day	1 - 5 days	1 - 15 days	1 - 20 days

Color indicates shipping lead time in business days.



**REHPSERIES1**



**REHPSERIES3**



**REHPSERIES8**

Hole Plugs for Non-Metal Enclosures				
Hole Plugs	Price	Description	Nominal Hole Diameter Range in [mm]	Wt [oz]
<b>REHPSERIES1</b>	\$4.00	AttaBox hole plug, fiberglass-reinforced polyester (FRP), closed-cell neoprene gasket, for 1/2 to 3/4-inch hole in non-metallic enclosure	0.50 - 0.81 [12.7 - 20.6]	2
<b>REHPSERIES1.5</b>	\$5.75	AttaBox hole plug, fiberglass-reinforced polyester (FRP), closed-cell neoprene gasket. For use with 1/2in conduit holes in non-metallic enclosures.	0.88 [22.4]	2
<b>REHPSERIES2</b>	\$4.75	AttaBox hole plug, fiberglass-reinforced polyester (FRP), closed-cell neoprene gasket, for 1/2- to 3/4-inch conduit holes and 22 or 30mm pushbutton holes in non-metallic enclosure	0.88 - 1.28 [22.4 - 32.5]	2
<b>REHPSERIES3</b>	\$7.50	AttaBox hole plug, fiberglass-reinforced polyester (FRP), closed-cell neoprene gasket, for 1 to 1-1/4 inch conduit holes in non-metallic enclosure	1.38 - 1.75 [35.1 - 44.5]	2
<b>REHPSERIES4</b>	\$9.50	AttaBox hole plug, fiberglass-reinforced polyester (FRP), closed-cell neoprene gasket, for 1-1/2 to 2-inch conduit holes in non-metallic enclosure	2.00 - 2.56 [50.1 - 65.0]	2
<b>REHPSERIES5</b>	\$17.25	AttaBox hole plug, fiberglass-reinforced polyester (FRP), closed-cell neoprene gasket. For use with 2-1/2in conduit holes in non-metallic enclosures.	3.00 [76.2]	2
<b>REHPSERIES6</b>	\$23.00	AttaBox hole plug, fiberglass-reinforced polyester (FRP), closed-cell neoprene gasket. For use with 3in conduit holes in non-metallic enclosures.	3.62 [92.0]	2
<b>REHPSERIES7</b>	\$30.00	AttaBox hole plug, fiberglass-reinforced polyester (FRP), closed-cell neoprene gasket. For use with 3-1/2in conduit holes in non-metallic enclosures.	4.12 [104.7]	2
<b>REHPSERIES8</b>	\$38.50	AttaBox hole plug, fiberglass-reinforced polyester (FRP), closed-cell neoprene gasket. For use with 4in conduit holes in non-metallic enclosures.	4.62 [117.4]	2

## Agency Approvals

- Fiberglass hole plug for UL Types 1, 3R, 4, 4X, 6, 6P, 12 Industrial control panel enclosures. [UL File E64358]
- CSA Types 1, 12, 3, 3R, 4, 4X, 6, 6P: IEC Code IP66, IP67, IP68 [CSA File LR069014]

# Vents and Louvers for Non-Metallic Enclosures



## Drain/Breather Vents



**REDVK3KIT**



**REBV4XKIT**

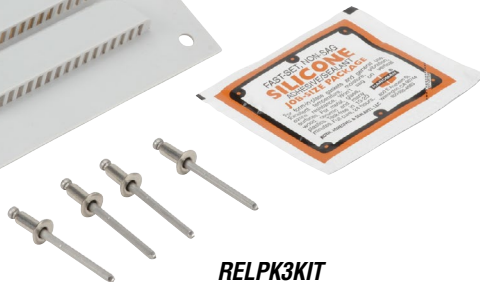
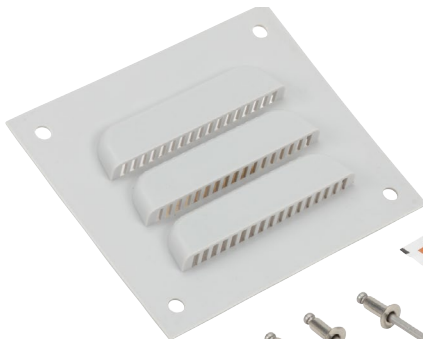


**REDV4KIT**

Part Number	Price	Description	Wt. [oz]
<b>REDV1PVC</b>	\$8.25	AttaBox single drain vent, PVC. For use on non-metallic enclosures. Includes drain vent and silicone adhesive/sealant.	2
<b>REDVK3KIT</b>	\$12.50	AttaBox single drain vent kit, PVC. Includes drain vent and silicone adhesive/sealant.	2
<b>REBV4XKIT</b>	\$42.50	AttaBox single breather vent kit allows enclosure to "breathe" while maintaining UL Type 4X enclosure rating.	4.8
<b>REDV4XKIT</b>	\$17.75	AttaBox single drain vent kit properly drains unwanted moisture while maintaining ULType 4X enclosure rating.	3.2

Enclosure Shipping Schedule			
Same day	1 - 5 days	1 - 15 days	1 - 20 days
Color indicates shipping lead time in business days.			

## Louver Plate



**RELPK3KIT**

Part Number	Price	Description	Wt. [oz]
<b>REL P1</b>	\$12.25	Louver plate, for ventilation in non-metallic enclosure, polypropylene, 4.5 inch wide x 4.0 inch high. For 3 inch x 3 inch cutout.	2
<b>RELPK3KIT</b>	\$30.50	Louver plate kit, for ventilation in non-metallic enclosure. Includes 4.5 inch wide x 4.0 inch high polypropylene louver plate, rivets and silicone adhesive/sealant. For 3 inch x 3 inch cutout.	2