

Fiberglass Pushbutton Enclosures – Commander Series

30mm Multi-Hole Pushbutton



CO6PBW

Construction

- Hot compression molded fiberglass reinforced thermoset polyester
- Poured polyurethane seamless gasket provides watertight, dust-tight environmental seal
- Recessed captive stainless steel screws
- 300 Series stainless steel used on all external hardware
- Integral mounting flange for easy mounting
- Optional mounting feet not available on this model
- Rounded edges, minimal protrusions or exposed pocket areas for accumulation of dust or debris
- Raised bosses with brass inserts accepting 10-32 screws for optional panel mounting
- Stainless steel beaded cover retention chain
- Metal grounding strap
- Submersible, non-corrosive environment
- Lift-off cover with four cover screws
- Non-conductive, impact-resistant, UV-resistant
- Temperature Range: -40°F to 250°F (-40°C to 120°C)
- Non-flame propagating
- Smooth surface, no color variations, swirls or color pockets, no voids
- Color: Gray

Listings

- UL/cUL File # E64358
- NEMA Ratings 1, 3R, 4X, 6P, and 12 [UL508A, UL50 and UL50e]
- CSA Std. C22.2 File # 1, 3R, 4X, 6P, and 12 per CSA File# LR069014
- IEC 60529 Ratings IP66, IP67, IP68 per UL file# E362920
- UL 1741 File # E333478
- Temperature Range (-76°F to +274°F) (-60°C to +134°C)
- Flammability Rating UL94-5V
 - Self-extinguishing
 - Non-halogenated
 - Non-flame propagating
- NFPA No. 101 Flame Spread Class A (1)
- Certifications cULus, CSA, IEC, REACH, RoHS
- Outdoor UV Exposure (UL 746C) (f1) Rated
- Plenum Space Rating (UL 2043) Yes



Shipping Schedule

Same day 1 - 5 days 1 - 7 days 1 - 15 days 1 - 20 days

Color indicates shipping lead time in business days.

30mm Fiberglass Multi-Hole Pushbutton Enclosures – Commander Series

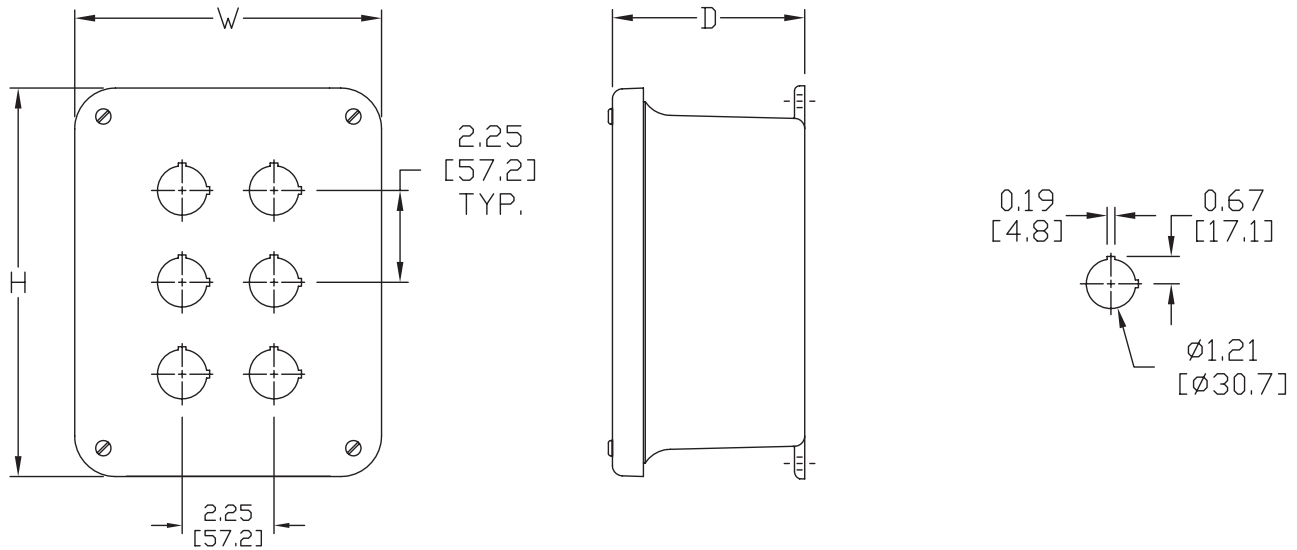
Part Number	Price	# Holes	Enclosure Overall Size HxWxD (inches)	Wt. (lb)	Carbon Steel Subpanel	Fiberglass Subpanel	Aluminum Subpanel
CO4PBW	Retired	4	7.50 x 7.50 x 4.75 [191 x 191 x 121]	2.75	BP66CS	—	BP66A
CO6PBW	Retired	6	9.62 x 7.50 x 4.74 [244 x 191 x 121]	3.5	BP86CS	BP86FG	BP86A
CO9PBW	Retired	9	11.62 x 9.41 x 4.25 [295 x 239 x 108]	5	BP108CS	BP108FG	BP108A

Notes: Subpanels must be ordered separately.
Dimensions in inches [millimeters].

Fiberglass Pushbutton Enclosures – Commander Series

30mm Multi-Hole Pushbutton

Dimensions



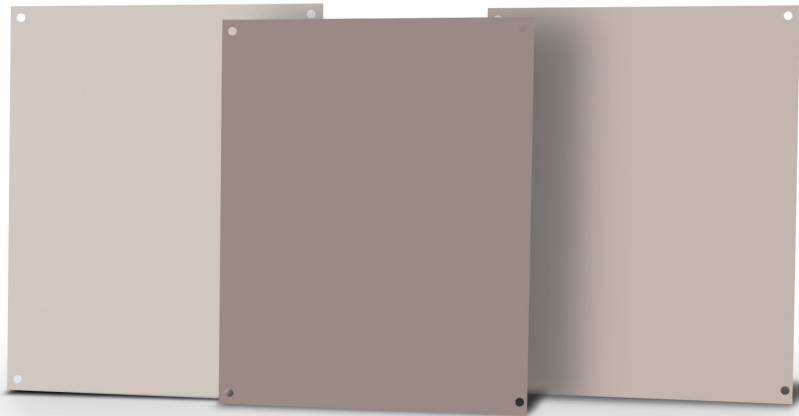
Mounting Foot Kit for Commander Series Enclosures



Shipping Schedule				
Same day	1 - 5 days	1 - 7 days	1 - 15 days	1 - 20 days
Color indicates shipping lead time in business days.				

Mounting Foot Kit for Commander Series Enclosures			
Part Number	Price	Description	Wt.
COMTGFTKIT	Retired	Mounting Foot Kit for Commander Series of Non-Metallic Enclosures	1 oz.

Subpanels for Freedom, MachoBox and Centurion Series Fiberglass Enclosures



Carbon steel subpanels

- Material: Carbon steel
- Finish: White polyester powder finish

Fiberglass subpanels

- Material: Fiberglass reinforced polyester (FRP)
- Color: Gray

Part Number	Price	Subpanel Size HxWxD	Enclosure Nominal Size HxW	Wt(lb)
BP64CS	\$17.25	4.88 x 2.88 x 0.075 [124 x 73 x 1.9]	6 x 4	0.3
BP66CS	\$11.25	4.88 x 4.88 x 0.075 [124 x 124 x 1.9]	6 x 6	0.5
BP76CS	Retired	6.00 x 4.88 x 0.075 [152 x 124 x 1.9]	7 x 6	0.6
BP86CS	\$13.50	6.75 x 4.88 x 0.075 [152 x 124 x 1.9]	8 x 6	0.8
BP88CS	\$21.00	6.88 x 6.88 x 0.075 [175 x 175 x 1.9]	8 x 8	0.8
BP96CS	Retired	8.25 x 4.88 x 0.075 [175 x 124 x 1.9]	9 x 6	0.9
BP108CS	\$20.50	8.75 x 6.88 x 0.075 [225 x 175 x 1.9]	10 x 8	1.3
BP1210CS	\$25.00	10.88 x 8.75 x 0.075 [276 x 225 x 1.9]	12 x 10	2.1
BP1412CS	\$30.00	12.88 x 10.88 x 0.075 [327 x 276 x 1.9]	14 x 12	3.0
BP1614CS	\$39.00	14.88 x 12.88 x 0.075 [378 x 327 x 1.9]	16 x 14	4.1
BP1816CS	\$50.50	16.88 x 14.88 x 0.075 [429 x 378 x 1.9]	18 x 16	5.4
BPM2016CS	Retired	18.88 x 14.88 x 0.075 [479 x 378 x 1.9]	20 x 16	6.1
BPM2020CS	Retired	18.00 x 18.00 x 0.105 [457 x 457 x 2.7]	20 x 20	9.4
BPM2420CS	Retired	22.00 x 18.00 x 0.105 [558 x 457 x 2.7]	24 x 20	11
BPM2424CS	Retired	22.00 x 22.00 x 0.105 [558 x 558 x 2.7]	24 x 24	22

Note: Dimensions in inches [millimeters].

Part Number	Price	Subpanel Size HxWxD	Enclosure Nominal Size HxW	Wt.(lb)
BP64FG	Retired	4.88 x 2.88 x 0.13 [124 x 73 x 3.2]	6 x 4	0.1
BP66FG	Retired	4.88 x 4.88 x 0.13 [124 x 124 x 3.2]	6 x 6	0.2
BP86FG	\$20.25	6.88 x 4.88 x 0.13 [175 x 124 x 3.2]	8 x 6	0.3
BP88FG	Retired	6.88 x 6.88 x 0.13 [175 x 175 x 3.2]	8 x 8	0.3
BP108FG	\$27.00	8.88 x 6.88 x 0.13 [225 x 175 x 3.2]	10 x 8	0.5
BP1210FG	\$34.50	10.88 x 8.88 x 0.13 [276 x 225 x 3.2]	12 x 10	0.9
BP1412FG	\$43.50	12.88 x 10.88 x 0.13 [327 x 276 x 3.2]	14 x 12	1.0
BP1614FG	\$54.00	14.88 x 12.88 x 0.13 [378 x 327 x 3.2]	16 x 14	0.8
BP1816FG	\$59.00	16.88 x 14.88 x 0.13 [429 x 378 x 3.2]	18 x 16	2.0
BPM2016FG	Retired	18.88 x 14.88 x 0.13 [479 x 378 x 3.2]	20 x 16	2.2
BPM2020FG	Retired	18.00 x 18.00 x 0.13 [457 x 457 x 3.2]	20 x 20	2.3
BPM2420FG	Retired	22.00 x 18.00 x 0.13 [558 x 457 x 3.2]	24 x 20	2.8
BPM2424FG	Retired	22.00 x 22.00 x 0.13 [558 x 558 x 3.2]	24 x 24	3.5

Note: Dimensions in inches [millimeters].

Subpanels for Freedom, MachoBox and Centurion Series Fiberglass Enclosures

Shipping Schedule

Same day 1 - 5 days 1 - 7 days 1 - 15 days 1 - 20 days

Color indicates shipping lead time in business days.



AttaBox
A ROBROY ENCLOSURES™ BRAND

Aluminum subpanels

- Material: 3003H14 aluminum
- Finish: Mill

Part Number	Price	Subpanel Size HxWxD	Enclosure Nominal Size HxW	Wt. (lb)
BP64A	Retired	4.88 x 2.88 x 0.081 [124 x 73 x 2.0]	6 x 4	0.1
BP66A	\$11.25	4.88 x 4.88 x 0.081 [124 x 124 x 2.0]	6 x 6	0.2
BP86A	\$13.50	6.88 x 4.88 x 0.081 [175 x 124 x 2.0]	8 x 6	0.3
BP108A	\$20.50	8.88 x 6.88 x 0.081 [225 x 175 x 2.0]	10 x 8	0.5
BP1010A	\$24.00	8.88 x 8.88 x 0.081 [225 x 225 x 2.0]	10 x 10	4.3
BP1210A	\$25.00	10.88 x 8.88 x 0.081 [276 x 225 x 2.0]	12 x 10	0.8
BP1412A	\$30.00	12.88 x 10.88 x 0.081 [327 x 276 x 2.0]	14 x 12	1.1
BP1614A	\$39.00	14.88 x 12.88 x 0.081 [378 x 327 x 2.0]	16 x 14	1.5
BP1816A	\$50.50	16.88 x 14.88 x 0.081 [429 x 378 x 2.0]	18 x 16	2.5
BPM2016A	Retired	18.88 x 14.88 x 0.081 [479 x 378 x 2.0]	20 x 16	2.4
BPM2020A	Retired	18.00 x 18.00 x 0.129 [457 x 457 x 3.3]	20 x 20	3.7
BPM2420A	Retired	22.00 x 18.00 x 0.129 [558 x 457 x 3.3]	24 x 20	4.5
BPM2424A	Retired	22.00 x 22.00 x 0.129 [558 x 558 x 3.3]	24 x 24	5.4
BPM3024A	Retired	27.00 x 21.00 x 0.129 [686 x 533 x 3.3]	30 x 24	7.0

Note: Dimensions in inches (millimeters).



Aluminum swing-out panel

- Swing-out panel with 8 swing-panel mounts
- Works with 30 x 24 in [762 x 610 mm] and 24 x 30 in [610 x 762 mm] MachoBox series enclosures

Part Number	Price	Panel Size HxWxD	Enclosure Nominal Size HxW	Wt. (lb)
M3024SPK	Retired	27.00 x 21.00 X 0.129 [686 X 533 X 3.3]	30 x 24	11

Dimensions

