

Fiberglass Enclosures – MachoBox Series – Extra Deep

Extra-Deep Single Door with Padlocking Twist-Lock Latches



M10088SSH

Construction

- Hot compression molded fiberglass reinforced polyester (thermoset)
- Poured polyurethane seamless gasket provides watertight, dust-tight environmental seal
- 304 stainless steel used on all external hardware
- Rounded edges, minimal protrusions or exposed pocket area for accumulation of dust or debris
- Molded-in flange for easy mounting
- Raised bosses with brass inserts accepting #10-32 screws for optional panel mounting
- Workable material cuts, drills, punches and saws with ease and accuracy
- Clamshell-style cover
- Full length, stainless steel, hinged door with padlockable twist-lock latches
- Full 180° door opening
- Non-conductive, UV resistant
- 216 lb-in impact resistance per UL746C
- Smooth surface, no color variations, swirls or color pockets, no voids
- Color: Gray

Listings

- UL/cUL File E64358
- NEMA Ratings 1, 3, 4X, 12 (UL508A, UL50 & UL50e)
- IEC 60529 Ratings IP66 per UL File E362920
- UL 1741 File E333478
- CSA Std. C22.2 Types 1, 3, 4X, 12 per CSA File LR069014
- Temperature Range (-76°F to +274°F) (-60°C to +134°C)
- Flammability Rating UL94-5V
- Self Extinguishing Non-Halogenated, Non-flame propagating
- NFPA No. 101 Flame Spread Class A (1)
- Impact Rating IK10
- Certifications cULus, IEC, REACH, RoHS
- Outdoor UV Exposure (UL 746C) (f1) Rated



Enclosure Shipping Schedule			
Same day	1 - 5 days	1 - 15 days	1 - 20 days
Color indicates shipping lead time in business days.			

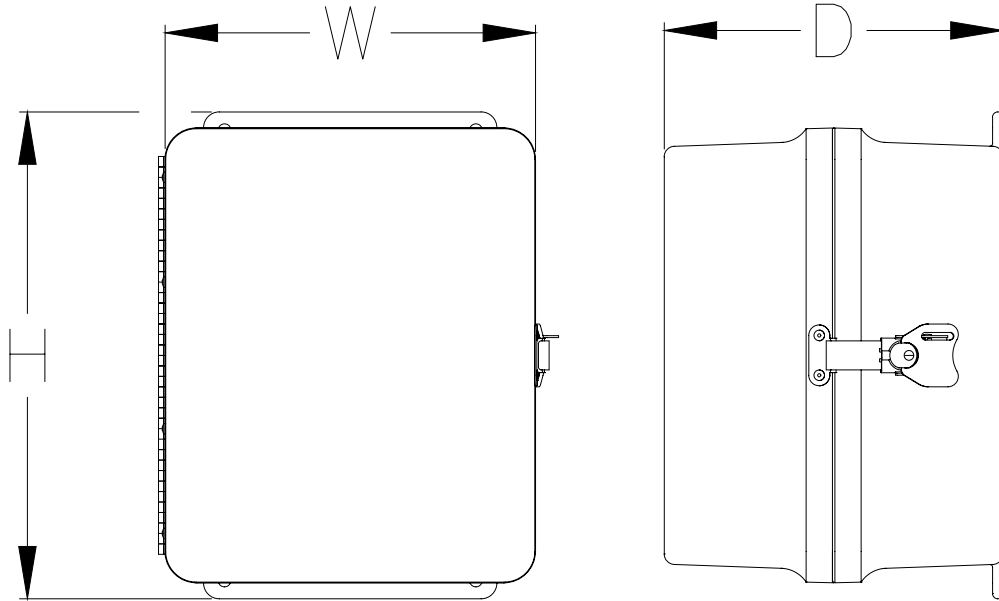
MachoBox Series Fiberglass Enclosures - Extra-Deep Single Door with Padlocking Twist-Lock Latches							
Enclosure Part Number	Price	Enclosure Overall Size (HxWxD)	Wt. [lb]	No. Latches	Carbon Steel Subpanel	Fiberglass Subpanel	Aluminum Subpanel
M8068SSH	\$133.00	9.63 x 6.85 x 9.06 [245 x 174 x 230]	4.5	1	BP86CS	BP86FG	BP86A
M8088SSH	\$142.00	9.56 x 8.84 x 9.44 [243 x 225 x 240]	4.8	1	BP88CS	BP88FG	-
M10088SSH	\$152.00	11.63 x 8.84 x 8.09 [295 x 225 x 206]	10.4	1	BP108CS	BP108FG	BP108A
M121010SSH	\$166.00	13.56 x 10.93 x 10.06 [344 x 278 x 256]	7.5	1	BP1210CS	BP1210FG	BP1210A
M141212SSH	\$215.00	15.50 x 12.83 x 12.06 [394 x 326 x 306]	11.3	2	BP1412CS	BP1412FG	BP1412A
M161412SSH	\$227.00	17.53 x 14.94 x 12.07 [445 x 379 x 307]	15.0	2	BP1614CS	BP1614FG	BP1614A
M181617SSH	\$284.00	19.63 x 16.92 x 17.19 [499 x 430 x 437]	21.6	2	BP1816CS	BP1816FG	BP1816A
M201617SSH	\$474.00	22.00 x 17.00 x 17.21 [559 x 432 x 437]	23.3	2	BPM2016CS	BM2016FG	BPM2016A

*Notes: Subpanels must be ordered separately.
Dimensions in inches [millimeters].*

Fiberglass Enclosures – MachoBox Series – Extra Deep

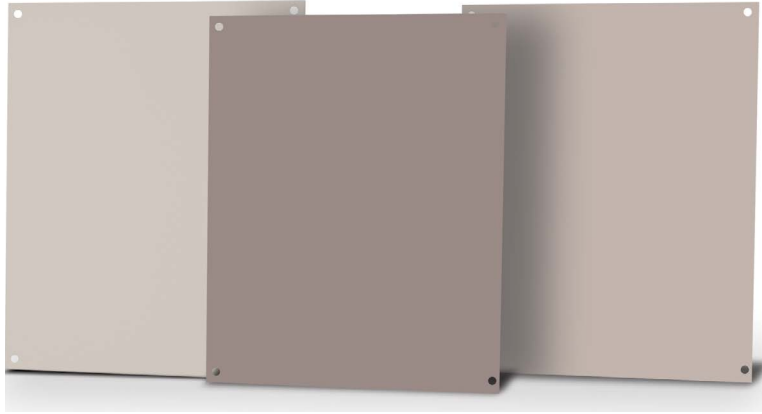


Dimensions for MachoBox Series Extra Deep Enclosures



See our website: www.AutomationDirect.com for complete engineering drawings.

Subpanels for Freedom, MachoBox and Centurion Series Fiberglass Enclosures



Subpanel Specifications		
Subpanel	Material	Color/Finish
Carbon Steel	Carbon Steel	White polyester powder Finish
Aluminum	3003H14 Aluminum	Mill Finish
Fiberglass	FRP (Fiberglass reinforced polyester)	Gray



Carbon steel subpanels

Fiberglass subpanels

Subpanel Part Number	Price	Subpanel Size HxWxD	Enclosure Nominal Size HxW	Wt (lb)
BP64CS	\$5.00	4.88 x 2.88 x 0.075 [124 x 73 x 1.9]	6 x 4	0.3
BP66CS	\$5.00	4.88 x 4.88 x 0.075 [124 x 124 x 1.9]	6 x 6	0.5
BP76CS	\$5.50	6.00 x 4.88 x 0.075 [152 x 124 x 1.9]	7 x 6	0.6
BP86CS	\$6.00	6.75 x 4.88 x 0.075 [152 x 124 x 1.9]	8 x 6	0.8
BP88CS	\$8.50	6.88 x 6.88 x 0.075 [175 x 175 x 1.9]	8 x 8	0.8
BP96CS	\$7.50	8.25 x 4.88 x 0.075 [175 x 124 x 1.9]	9 x 6	0.9
BP108CS	\$9.25	8.75 x 6.88 x 0.075 [225 x 175 x 1.9]	10 x 8	1.3
BP1210CS	\$11.00	10.88 x 8.75 x 0.075 [276 x 225 x 1.9]	12 x 10	2.1
BP1412CS	\$13.25	12.88 x 10.88 x 0.075 [327 x 276 x 1.9]	14 x 12	3.0
BP1614CS	\$17.25	14.88 x 12.88 x 0.075 [378 x 327 x 1.9]	16 x 14	4.1
BP1816CS	\$22.50	16.88 x 14.88 x 0.075 [429 x 378 x 1.9]	18 x 16	5.4
BPM2016CS	\$28.50	18.88 x 14.88 x 0.075 [479 x 378 x 1.9]	20 x 16	6.1
BPM2020CS	\$83.00	18.00 x 18.00 x 0.105 [457 x 457 x 2.7]	20 x 20	9.4
BPM2420CS	\$100.00	22.00 x 18.00 x 0.105 [558 x 457 x 2.7]	24 x 20	11
BPM2424CS	\$123.00	22.00 x 22.00 x 0.105 [558 x 558 x 2.7]	24 x 24	22

Note: Dimensions in inches [millimeters].

Subpanel Part Number	Price	Subpanel Size HxWxD	Enclosure Nominal Size HxW	Wt. (lb)
BP64FG	\$3.50	4.88 x 2.88 x 0.13 [124 x 73 x 3.2]	6 x 4	0.1
BP66FG	\$4.25	4.88 x 4.88 x 0.13 [124 x 124 x 3.2]	6 x 6	0.2
BP86FG	\$5.50	6.88 x 4.88 x 0.13 [175 x 124 x 3.2]	8 x 6	0.3
BP88FG	\$7.50	6.88 x 6.88 x 0.13 [175 x 175 x 3.2]	8 x 8	0.3
BP108FG	\$8.00	8.88 x 6.88 x 0.13 [225 x 175 x 3.2]	10 x 8	0.5
BP1210FG	\$10.50	10.88 x 8.88 x 0.13 [276 x 225 x 3.2]	12 x 10	0.9
BP1412FG	\$14.50	12.88 x 10.88 x 0.13 [327 x 276 x 3.2]	14 x 12	1.0
BP1614FG	\$18.25	14.88 x 12.88 x 0.13 [378 x 327 x 3.2]	16 x 14	0.8
BP1816FG	\$22.50	16.88 x 14.88 x 0.13 [429 x 378 x 3.2]	18 x 16	2.0
BPM2016FG	\$27.50	18.88 x 14.88 x 0.13 [479 x 378 x 3.2]	20 x 16	2.2
BPM2020FG	\$90.00	18.00 x 18.00 x 0.13 [457 x 457 x 3.2]	20 x 20	2.3
BPM2420FG	\$109.00	22.00 x 18.00 x 0.13 [558 x 457 x 3.2]	24 x 20	2.8
BPM2424FG	\$133.00	22.00 x 22.00 x 0.13 [558 x 558 x 3.2]	24 x 24	3.5

Note: Dimensions in inches [millimeters].

Enclosure Shipping Schedule			
Same day	1 - 5 days	1 - 15 days	1 - 20 days

Color indicates shipping lead time in business days.

Subpanels for Freedom, MachoBox and Centurion Series Fiberglass Enclosures



Aluminum subpanels

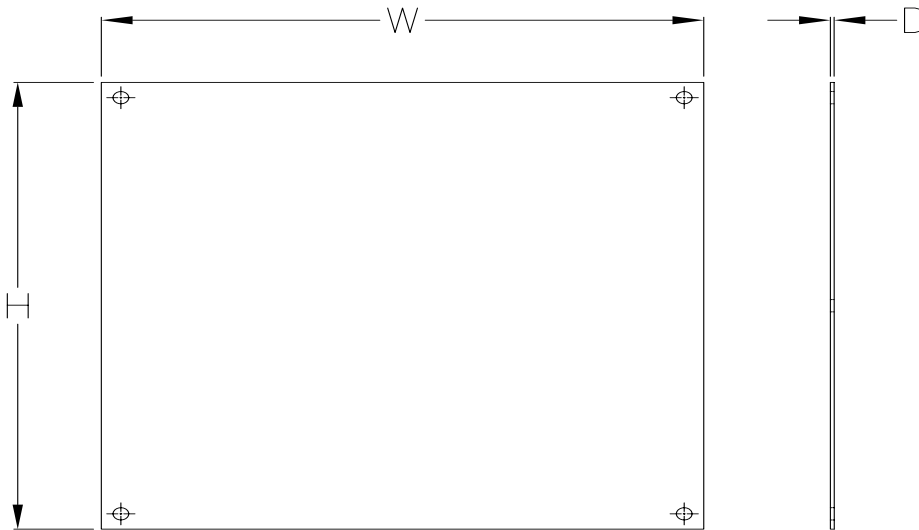
Subpanel Part Number	Price	Subpanel Size HxWxD	Enclosure Nominal Size HxW	Wt. (lb)
BP64A	\$5.00	4.88 x 2.88 x 0.081 [124 x 73 x 2.0]	6 x 4	0.1
BP66A	\$5.00	4.88 x 4.88 x 0.081 [124 x 124 2.0]	6 x 6	0.2
BP86A	\$6.00	6.88 x 4.88 x 0.081 [175 x 124] 2.0]	8 x 6	0.3
BP108A	\$9.25	8.88 x 6.88 x 0.081 [225 x 175 x 2.0]	10 x 8	0.5
BP1210A	\$11.00	10.88 x 8.88 x 0.081 [276 x 225 x 2.0]	12 x 10	0.8
BP1412A	\$13.25	12.88 x 10.88 x 0.081 [327 x 276 x 2.0]	14 x 12	1.1
BP1614A	\$17.25	14.88 x 12.88 x 0.081 [378 x 327 x 2.0]	16 x 14	1.5
BP1816A	\$22.50	16.88 x 14.88 x 0.081 [429 x 378 x 2.0]	18 x 16	2.5
BPM2016A	\$28.50	18.88 x 14.88 x 0.081 [479 x 378 x 2.0]	20 x 16	2.4
BPM2020A	\$79.00	18.0 x 18.0 x 0.129 [457 x 457 x 3.3]	20 x 20	3.7
BPM2420A	\$96.00	22.0 x 18.0 x 0.129 [558 x 457 x 3.3]	24 x 20	4.5
BPM2424A	\$118.00	22.0 x 22.0 x 0.129 [558 x 558 x 3.3]	24 x 24	5.4

Note: Dimensions in inches [millimeters].

Enclosure Shipping Schedule			
Same day	1 - 5 days	1 - 15 days	1 - 20 days

Color indicates shipping lead time in business days.

Dimensions



See our website: www.AutomationDirect.com for complete engineering drawings.

Enclosure Accessories - Hole Seals and Plugs



Hole Plugs for Non-Metal Enclosures

Designed to seal extra pushbutton holes, conduit openings, and knockout openings in AttaBox fiberglass enclosures from dirt, dust, oil, and water. Conduit hole sizes are nominal trade sizes, not actual hole sizes. (Example: 1 in. conduit actual diameter = 1.315 in.)



Hole Plugs	Price	Description	Nominal Hole Diameter Range in [mm]	Wt. [oz]
REHPSERIES1	\$3.50	AttaBox hole plug, fiberglass-reinforced polyester (FRP), closed-cell neoprene gasket, for 1/2- to 3/4-inch hole in non-metallic enclosure	0.50 - 0.81 [12.7 - 20.6]	2
REHPSERIES1.5	\$4.75	AttaBox hole plug, fiberglass-reinforced polyester (FRP), closed-cell neoprene gasket. For use with 1/2in conduit holes in non-metallic enclosures.	0.88 [22.4]	2
REHPSERIES2	\$4.00	AttaBox hole plug, fiberglass-reinforced polyester (FRP), closed-cell neoprene gasket, for 1/2- to 3/4-inch conduit holes and 22 or 30mm pushbutton holes in non-metallic enclosure	0.88 - 1.28 [22.4 - 32.5]	2
REHPSERIES3	\$6.25	AttaBox hole plug, fiberglass-reinforced polyester (FRP), closed-cell neoprene gasket, for 1 to 1-1/4 inch conduit holes in non-metallic enclosure	1.38 - 1.75 [35.1 - 44.5]	2
REHPSERIES4	\$8.00	AttaBox hole plug, fiberglass-reinforced polyester (FRP), closed-cell neoprene gasket, for 1-1/2 to 2-inch conduit holes in non-metallic enclosure	2.00 - 2.56 [50.1 - 65.0]	2
REHPSERIES5	\$14.75	AttaBox hole plug, fiberglass-reinforced polyester (FRP), closed-cell neoprene gasket. For use with 2-1/2in conduit holes in non-metallic enclosures.	3.00 [76.2]	2
REHPSERIES6	\$19.75	AttaBox hole plug, fiberglass-reinforced polyester (FRP), closed-cell neoprene gasket. For use with 3in conduit holes in non-metallic enclosures.	3.62 [92.0]	2
REHPSERIES7	\$25.50	AttaBox hole plug, fiberglass-reinforced polyester (FRP), closed-cell neoprene gasket. For use with 3-1/2in conduit holes in non-metallic enclosures.	4.12 [104.7]	2
REHPSERIES8	\$33.00	AttaBox hole plug, fiberglass-reinforced polyester (FRP), closed-cell neoprene gasket. For use with 4in conduit holes in non-metallic enclosures.	4.62 [117.4]	2

Agency Approvals

- Fiberglass hole plug for UL Types 1, 3R, 4, 4X, 6, 6P, 12 Industrial control panel enclosures.
[UL File E64358]
- CSA Types 1, 12, 3, 3R, 4, 4X, 6, 6P:
IEC Code IP66, IP67, IP68
[CSA File LR069014]

Enclosure Shipping Schedule			
Same day	1 - 5 days	1 - 15 days	1 - 20 days
Color indicates shipping lead time in business days.			

Vents and Louvers for Non-Metallic Enclosures



Drain/Breather Vents



REDVK3KIT



REBV4XKIT



REDV4KIT

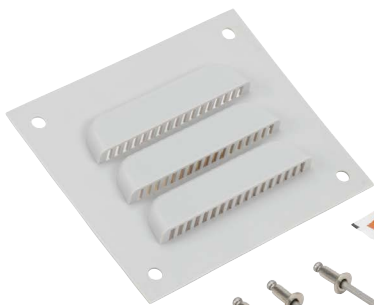
Part Number	Price	Description	Wt. [oz]
REDV1PVC	\$7.00	AttaBox single drain vent, PVC. For use on non-metallic enclosures. Includes drain vent and silicone adhesive/sealant.	2
REDVK3KIT	\$10.75	AttaBox single drain vent kit, PVC. Includes drain vent and silicone adhesive/sealant.	2
REBV4XKIT	\$36.00	AttaBox single breather vent kit allows enclosure to "breathe" while maintaining UL Type 4X enclosure rating.	4.8
REDV4XKIT	\$15.25	AttaBox single drain vent kit properly drains unwanted moisture while maintaining ULType 4X enclosure rating.	3.2

Enclosure Shipping Schedule

Same day	1 - 5 days	1 - 15 days	1 - 20 days
----------	------------	-------------	-------------

Color indicates shipping lead time in business days.

Louver Plate



RELPK3KIT

Part Number	Price	Description	Wt. [oz]
RELPL1	\$10.50	Louver plate, for ventilation in non-metallic enclosure, polypropylene, 4.5 inch wide x 4.0 inch high. For 3 inch x 3 inch cutout.	2
RELPK3KIT	\$26.00	Louver plate kit, for ventilation in non-metallic enclosure. Includes 4.5 inch wide x 4.0 inch high polypropylene louver plate, rivets and silicone adhesive/sealant. For 3 inch x 3 inch cutout.	2