

Inline Mechanical Pressure Switches and Flow Control Valves

Pneumatic push-to-connect mechanical pressure switches with brass sensing elements, nitrile seals and technopolymer body. Manually adjustable setpoint allows easy process feedback for a wide range of applications.

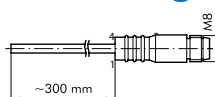
Features

- Works with flexible pneumatic tubing
- Easily added to existing circuits
- Max pressure 145 psi



Pressure Switch

Wiring

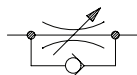


Inline Mechanical Pressure Switches												
Part No.	Price	Connection	Setpoint Range	Deadband Range	Switching Output	Max Current	Max Voltage	Electrical Connection	Weight (lbs)	Brand	Drawing Link	Manufacturer Specifications
9070116	\$36.00	(2) 6mm push-to-connect	7.5–145 psig	5.8–11.6 psig	SPDT 2A	2A	250V	1ft / 0.3m cable with 3-pin M8 snap-fit connector	0.12	METAL WORK	PDF	PDF
9070116U	\$36.00	(2) 1/4in push-to-connect	7.5–145 psig	5.8–11.6 psig	SPDT 2A	2A	250V	1ft / 0.3m cable with 3-pin M8 snap-fit connector	0.12		PDF	
9070124	\$36.50	(2) 5/16in (8mm) push-to-connect	7.5–145 psig	5.8–11.6 psig	SPDT 2A	2A	250V	1ft / 0.3m cable with 3-pin M8 snap-fit connector	0.15		PDF	
9070132U	\$43.00	(2) 3/8in push-to-connect	7.5–145 psig	5.8–11.6 psig	SPDT 2A	2A	250V	1ft / 0.3m cable with 3-pin M8 snap-fit connector	0.18		PDF	

Pneumatic push-to-connect inline flow control valves are free flow in one direction and regulated flow in the other. Ideal for controlling actuator speed or other similar applications.

Features

- Works with flexible pneumatic tubing
- Easily added to existing circuits



Flow Control Valve



Inline Flow Control Valves										
Part No.	Price	Connection	Operating Pressure	Operating Temperature	Flow Rate (scfm)*	Weight (lbs)	Brand	Drawing Link	Manufacturer Specifications	
9041366	\$16.50	(1) 6mm push-to-connect to (1) 6mm push-to-connect	0–145 psi	-4 to +140 °F	15.9	0.08	METAL WORK	PDF	PDF	
9041366U	\$16.50	(1) 1/4in push-to-connect to (1) 1/4in push-to-connect				0.09		PDF		
9041374	\$19.00	(1) 5/16in (8mm) push-to-connect to (1) 5/16in (8mm) push-to-connect			30.0	0.12		PDF		
9041382U	\$36.00	(1) 3/8in push-to-connect to (1) 3/8in push-to-connect			49.4	0.17		PDF		

*Flow conditions: 90 psi inlet pressure, 14.5 psi ΔP

See our website www.AutomationDirect.com for complete Engineering drawings.

Special Purpose Push-to-Connect Pneumatic Fittings



(Fasteners shown not included)

Pneumatic inline fittings are special purpose products mounted inline with pneumatic circuits. With these small, highly efficient components it is possible to perform many pneumatic functions at any point in a circuit.

- Ultra-modular
- Components can be connected in parallel or series
- Push-to-Connect: No tools required!
- Made of lightweight technopolymer
- Stem adapters connect push-to-connect fittings to NPT ports



Inline Pilot Valves



Inline Pressure Regulators



Inline Pressure Gauges



Inline Mechanical Pressure Switch



Inline Pressure Indicators



Inline Manual Shutoff Valves



Stem Adapters



Inline Flow Control Valves



Inline Quick Exhaust Valves



Inline Filter and Elements

