



bit Filter-Regulators

Metal Work **bit** filter-regulators provide particulate and moisture removal as well as pressure regulation in a compact package.



Features

- Includes filter and regulator
- Fluid - Compressed air or other inert gases
- Port sizes from 1/8in NPT to 1/4in NPT
- Gauges and/or hex plugs sold separately
- Replaceable 20 micron filter element (5 and 50 micron filters sold separately)
- Max. input pressure 188 psi
- Max. Temperature 122 °F [50 °C]



See www.AutomationDirect.com for a wide variety of fitting options









Metal Work bit Filter-Regulators													
Part No.	Price	Weight (lbs)	Inlet(s) (NPT)	Outlet(s) (NPT)	Drain Bowl	Drain Type	Setpoint Range	Filter	Drawing Link	Manufacturer Specifications			
5105002U	\$41.00	0.38	1/8" FNPT	1/8" FNPT	Clear technopolymer	Manual/semi-automatic	0-30 psig	Replaceable 20 micron filter element	PDF	PDF			
5105005U	\$36.50	0.39					0-60 psig		PDF				
5105008U	\$36.50	0.39					0-120 psig		PDF				
5105011U	\$36.50	0.40					0-180 psig		PDF				
5205002U	\$36.50	0.36	1/4" FNPT	1/4" FNPT			0-30 psig		Manual/semi-automatic		Replaceable 20 micron filter element	PDF	PDF
5205005U	\$36.50	0.37					0-60 psig					PDF	
5205008U	\$36.50	0.37					0-120 psig					PDF	
5205011U	\$36.50	0.38					0-180 psig					PDF	

For additional details see manufacturer's technical specifications.

See our website www.AutomationDirect.com for complete Engineering drawings.



bit Accessories

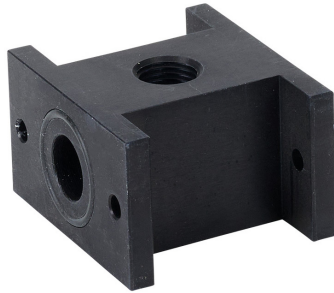
Metal Work bit Accessories							
Item Photo	Part No.	Price	Description	Drawing Link	Manufacturer Specifications	Weight (lbs)	
	<u>9200701</u>	\$3.25	Metal Work mounting bracket, panel, plated steel. For use with Metal Work BIT series air prep components.	<u>PDF</u>		0.08	
	<u>9170201</u>	\$0.75	Metal Work assembly plates, component connection, plated steel. For use with Metal Work BIT series air prep components. Mounting hardware included.	<u>PDF</u>		0.02	
	<u>9170301</u>	\$5.25	Metal Work mounting brackets, panel, plated steel. For use with Metal Work BIT series air prep components. Mounting hardware included.	<u>PDF</u>		0.03	
	<u>9251708</u>	\$6.50	Metal Work particulate filter element, replacement, 5 micron particles, yellow HDPE. For use with Metal Work BIT series filters.	<u>PDF</u>		<u>PDF</u>	0.02
	<u>9251709</u>	\$6.00	Metal Work particulate filter element, replacement, 20 micron particles, white HDPE. For use with Metal Work BIT series filters.	<u>PDF</u>			0.02
	<u>9251710</u>	\$6.50	Metal Work particulate filter element, replacement, 50 micron particles, blue HDPE. For use with Metal Work BIT series filters.	<u>PDF</u>			0.02
	<u>9251712</u>	\$70.00	Metal Work coalescing oil removal filter element, replacement, 0.01 micron particles, borosilicate glass microfiber. For use with Metal Work BIT series filters.	<u>PDF</u>			0.07
	<u>88257C1</u>	\$1.75	Metal Work pneumatic threaded fitting, recessed hex plug, brass body, brass threads, G1/8 male BSPP.	<u>PDF</u>	<u>N/A</u>	0.12	

For additional details see manufacturer's technical specifications.



bit Air Distribution Block

Metal Work **bit** air distribution block adds two 1/8" NPT outlets to a modular air prep assembly.



Features

- Fluid - Compressed air or other inert gases
- Max. input pressure 188 psi
- Max. Temperature 122 °F [50 °C]



See www.AutomationDirect.com for a wide variety of fitting options

Metal Work bit Air Distribution Block						
Part No.	Price	Weight (lbs)	Thru Port Diameter (in)	Outlet(s) (NPT)	Drawing Link	Manufacturer Specifications
9100401U	\$13.00	0.14	0.394 (10mm)	(1) 1/4in NPT axial (2) 1/8in NPT vertically opposing	PDF	PDF

For additional details see manufacturer's technical specifications.



bit Air Prep Components

The **bit** line of air prep components from Metal Work offers outstanding performance in a compact, lightweight design. Focus is on value and ease-of-use.

Features

- Lightweight yet durable bodies of technopolymer and nickel-plated brass
- Port sizes from 1/8in NPT to 1/4in NPT

