



# bit Filters



Metal Work **bit** filters provide particulate and moisture removal in a compact package. The technopolymer bowl is more resistant to environmental stress cracking than polycarbonate.

## Features

- Replaceable 20 micron filter element
- Fluid - Compressed air or other inert gases
- Port sizes from 1/8in NPT to 1/4in NPT
- Replaceable 20 micron filter element (5 and 50 micron filters sold separately)
- Max. input pressure 188 psi
- Max. Temperature 122 °F [50 °C]



See [www.AutomationDirect.com](http://www.AutomationDirect.com) for a wide variety of fitting options









Metal Work bit Filters									
Part No.	Price	Weight (lbs)	Inlet(s) (NPT)	Outlet(s) (NPT)	Bowl Material	Drain Type	Filter	Drawing Link	Manufacturer Specifications
<a href="#">5101002U</a>	\$20.50	0.23	1/8" FNPT	1/8" FNPT	Clear technopolymer	Manual/semi-automatic	Replaceable 20 micron filter element	<a href="#">PDF</a>	<a href="#">PDF</a>
<a href="#">5201002U</a>	\$20.50	0.21	1/4" FNPT	1/4" FNPT				<a href="#">PDF</a>	

For additional details see manufacturer's technical specifications.

See our website [www.AutomationDirect.com](http://www.AutomationDirect.com) for complete Engineering drawings.



# bit Accessories

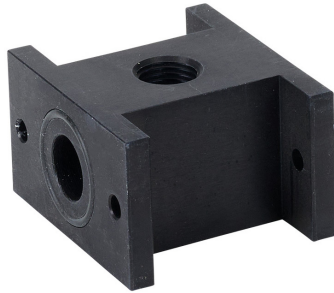
Metal Work bit Accessories							
Item Photo	Part No.	Price	Description	Drawing Link	Manufacturer Specifications	Weight (lbs)	
	<a href="#"><u>9200701</u></a>	\$3.25	Metal Work mounting bracket, panel, plated steel. For use with Metal Work BIT series air prep components.	<a href="#"><u>PDF</u></a>		0.08	
	<a href="#"><u>9170201</u></a>	\$0.75	Metal Work assembly plates, component connection, plated steel. For use with Metal Work BIT series air prep components. Mounting hardware included.	<a href="#"><u>PDF</u></a>		0.02	
	<a href="#"><u>9170301</u></a>	\$5.25	Metal Work mounting brackets, panel, plated steel. For use with Metal Work BIT series air prep components. Mounting hardware included.	<a href="#"><u>PDF</u></a>		0.03	
	<a href="#"><u>9251708</u></a>	\$6.50	Metal Work particulate filter element, replacement, 5 micron particles, yellow HDPE. For use with Metal Work BIT series filters.	<a href="#"><u>PDF</u></a>		<a href="#"><u>PDF</u></a>	0.02
	<a href="#"><u>9251709</u></a>	\$6.00	Metal Work particulate filter element, replacement, 20 micron particles, white HDPE. For use with Metal Work BIT series filters.	<a href="#"><u>PDF</u></a>			0.02
	<a href="#"><u>9251710</u></a>	\$6.50	Metal Work particulate filter element, replacement, 50 micron particles, blue HDPE. For use with Metal Work BIT series filters.	<a href="#"><u>PDF</u></a>			0.02
	<a href="#"><u>9251712</u></a>	\$70.00	Metal Work coalescing oil removal filter element, replacement, 0.01 micron particles, borosilicate glass microfiber. For use with Metal Work BIT series filters.	<a href="#"><u>PDF</u></a>			0.07
	<a href="#"><u>88257C1</u></a>	\$1.75	Metal Work pneumatic threaded fitting, recessed hex plug, brass body, brass threads, Buna-N O-ring seal(s), G1/8 male BSPP.	<a href="#"><u>PDF</u></a>	<a href="#"><u>N/A</u></a>	0.60	

For additional details see manufacturer's technical specifications.



# bit Air Distribution Block

Metal Work **bit** air distribution block adds two 1/8" NPT outlets to a modular air prep assembly.



## Features

- Fluid - Compressed air or other inert gases
- Max. input pressure 188 psi
- Max. Temperature 122 °F [50 °C]



See [www.AutomationDirect.com](http://www.AutomationDirect.com) for a wide variety of fitting options

Metal Work bit Air Distribution Block						
Part No.	Price	Weight (lbs)	Thru Port Diameter (in)	Outlet(s) (NPT)	Drawing Link	Manufacturer Specifications
<a href="#">9100401U</a>	\$13.00	0.14	0.394 (10mm)	(1) 1/4in NPT axial (2) 1/8in NPT vertically opposing	<a href="#">PDF</a>	<a href="#">PDF</a>

For additional details see manufacturer's technical specifications.



# bit Air Prep Components

The **bit** line of air prep components from Metal Work offers outstanding performance in a compact, lightweight design. Focus is on value and ease-of-use.

## Features

- Lightweight yet durable bodies of technopolymer and nickel-plated brass
- Port sizes from 1/8in NPT to 1/4in NPT

