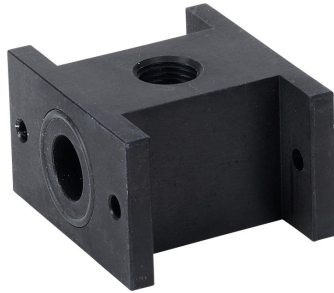




bit Air Distribution Block

Metal Work **bit** air distribution block adds two 1/8" NPT outlets to a modular air prep assembly.



Features

- Fluid - Compressed air or other inert gases
- Max. input pressure 188 psi
- Max. Temperature 122 °F [50 °C]











See www.AutomationDirect.com for a wide variety of fitting options

| Metal Work bit Air Distribution Block | | | | | | |
|---------------------------------------|---------|--------------|-------------------------|--|---------------------|-----------------------------|
| Part No. | Price | Weight (lbs) | Thru Port Diameter (in) | Outlet(s) (NPT) | Drawing Link | Manufacturer Specifications |
| 9100401U | \$13.00 | 0.14 | 0.394 (10mm) | (1) 1/4in NPT axial (2) 1/8in NPT vertically opposing | PDF | PDF |

For additional details see manufacturer's technical specifications.



bit Accessories

| Metal Work bit Accessories | | | | | | | |
|---|--------------------------------|---------|--|----------------------------|-----------------------------|----------------------------|------|
| Item Photo | Part No. | Price | Description | Drawing Link | Manufacturer Specifications | Weight (lbs) | |
|  | <u>9200701</u> | \$3.25 | Metal Work mounting bracket, panel, plated steel. For use with Metal Work BIT series air prep components. | <u>PDF</u> | | 0.08 | |
|  | <u>9170201</u> | \$0.75 | Metal Work assembly plates, component connection, plated steel. For use with Metal Work BIT series air prep components. Mounting hardware included. | <u>PDF</u> | | 0.02 | |
|  | <u>9170301</u> | \$5.25 | Metal Work mounting brackets, panel, plated steel. For use with Metal Work BIT series air prep components. Mounting hardware included. | <u>PDF</u> | | 0.03 | |
|  | <u>9251708</u> | \$6.50 | Metal Work particulate filter element, replacement, 5 micron particles, yellow HDPE. For use with Metal Work BIT series filters. | <u>PDF</u> | | <u>PDF</u> | 0.02 |
|  | <u>9251709</u> | \$6.00 | Metal Work particulate filter element, replacement, 20 micron particles, white HDPE. For use with Metal Work BIT series filters. | <u>PDF</u> | | | 0.02 |
|  | <u>9251710</u> | \$6.50 | Metal Work particulate filter element, replacement, 50 micron particles, blue HDPE. For use with Metal Work BIT series filters. | <u>PDF</u> | | | 0.02 |
|  | <u>9251712</u> | \$70.00 | Metal Work coalescing oil removal filter element, replacement, 0.01 micron particles, borosilicate glass microfiber. For use with Metal Work BIT series filters. | <u>PDF</u> | | | 0.07 |
|  | <u>88257C1</u> | \$1.75 | Metal Work pneumatic threaded fitting, recessed hex plug, brass body, brass threads, Buna-N O-ring seal(s), G1/8 male BSPP. | <u>PDF</u> | <u>N/A</u> | 0.60 | |

For additional details see manufacturer's technical specifications.



bit Air Prep Components

The **bit** line of air prep components from Metal Work offers outstanding performance in a compact, lightweight design. Focus is on value and ease-of-use.

Features

- Lightweight yet durable bodies of technopolymer and nickel-plated brass
- Port sizes from 1/8in NPT to 1/4in NPT

