

Accessories for QM Series Photoelectric Sensors

Mounting Bracket

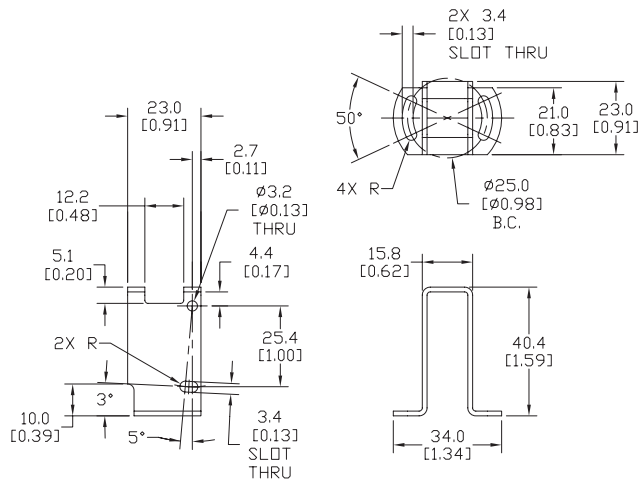
Mounting bracket, protective vertical, 304 stainless steel. For use with prewired QM series photoelectric sensors only. Mounting hardware included.

Accessories for QM Series Photoelectric Sensor			
Part Number	Price	Description	Weight [lb]
ST103	\$4.00	Mounting bracket, protective vertical, 304 stainless steel. For use with prewired QM series photoelectric sensors only. Mounting hardware included.	0.06



Dimensions

mm [inches]



See our website: www.AutomationDirect.com for complete engineering drawings