

# Mounting Rods

## Mounting Rods

304 Stainless steel rods for mounting swivel brackets OPT2112 - OPT2127. Available in three lengths: 200mm, 300mm, and 500mm. 12mm diameter.

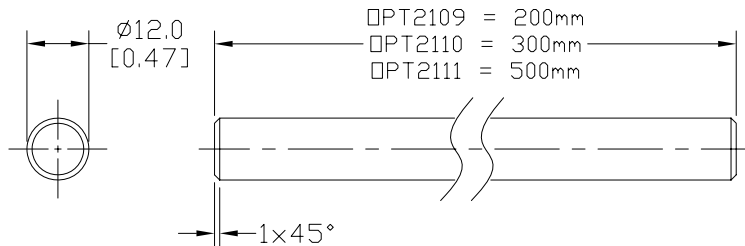
Mounting Rods for OPT2112-2127 Swivel Mounting Brackets			
Part Number	Price	Description	Weight [lb]
<b>OPT2109</b>	\$10.50	Mounting rod, 12mm diameter, 200mm length, 304 stainless steel.	0.41
<b>OPT2110</b>	\$12.50	Mounting rod, 12mm diameter, 300mm length, 304 stainless steel.	0.60
<b>OPT2111</b>	\$16.50	Mounting rod, 12mm diameter, 500mm length, 304 stainless steel.	0.98



**OPT2109, OPT2110, OPT2111**

## Dimensions

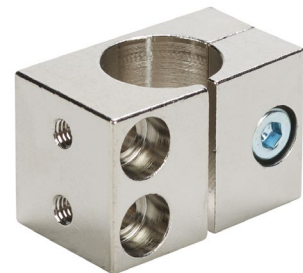
mm [inches]



## Right-angle Mounting Bracket

Mounting bracket, right-angle, nickel-plated brass. For use with 12mm mounting rods OPT2109, OPT2110 & OPT2111.

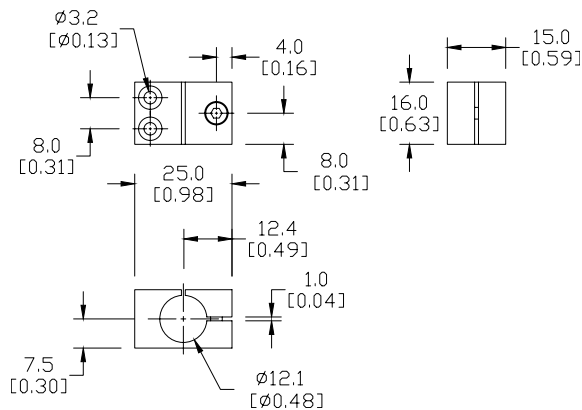
Accessories for 12mm Sensors			
Part Number	Price	Description	Weight [lb]
<b>OPT2108</b>	\$12.50	Mounting bracket, right-angle, nickel-plated brass. For use with 12mm mounting rods OPT2109, OPT2110 & OPT2111.	0.07



**OPT2108**

## Dimensions

mm [inches]



See our website: [www.AutomationDirect.com](http://www.AutomationDirect.com) for complete engineering drawings