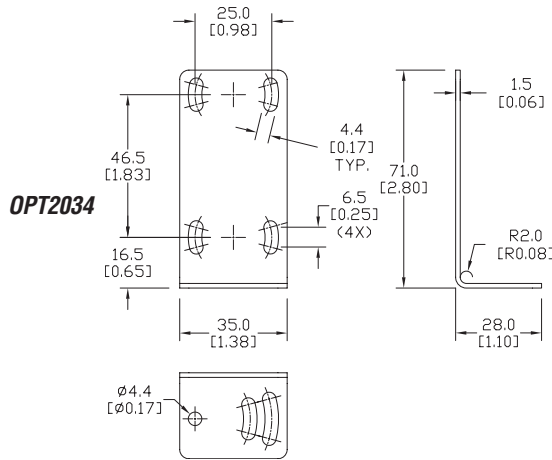


Accessories for OPT2024-OPT2025 Photoelectric Sensors

Right-Angle Mounting Brackets

Mounting bracket, right angle, steel and nickel plated. For use with OPT2024-OPT2025 photoelectric sensors.

Mounting Brackets for OPT Series Photoelectric Sensors				
Part Number	Price	Description	Qty.	Weight
OPT2034	\$5.50	Right-angle mounting bracket, vertical adjustment, steel and nickel plated. For use with OPT2024 & OPT2025 photoelectric sensors.	1	38g [1.3404 oz]



OPT2034

Right-angle Swivel Mounting Systems

Mounting bracket, right-angle swivel, 360 degree vertical and horizontal adjustment, 12mm rod mount. For use with OPT2024-OPT2025 photoelectric sensors. Available in all 304 stainless steel or with an aluminum mounting head and 304 stainless steel mounting plate.

Accessories for 25mm Sensors					
Part Number	Price	Description	Mounting Head	Mounting Plate	Weight [lb]
OPT2124	\$9.00	Mounting bracket, right-angle swivel, 360 vertical and horizontal adjustment, aluminum, 12mm rod mount. For use with OPT2024-OPT2025 photoelectric sensors.	Aluminum	304 Stainless Steel	0.15
OPT2125	\$15.00	Mounting bracket, right-angle swivel, 360 vertical and horizontal adjustment, 304 stainless steel, 12mm rod mount. For use with 20PT2024-OPT2025 photoelectric sensors.	304 Stainless Steel	304 Stainless Steel	0.27

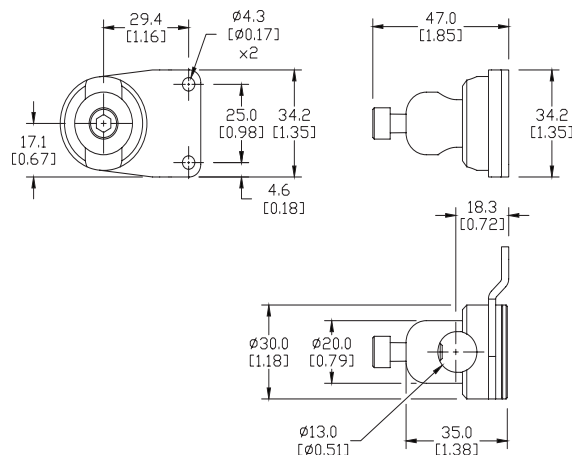
Note: 304 Stainless steel mounting rods sold separately: OPT2109 (200mm length), OPT2110 (300mm length), and OPT2111 (500mm length).



OPT2124, OPT2125

Dimensions

mm [inches]



See our website: www.AutomationDirect.com for complete engineering drawings