

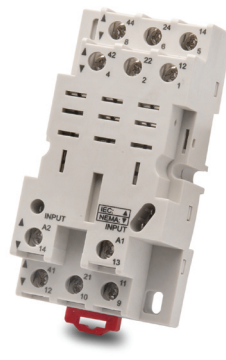
Relay Sockets 78 Series



781-1C-SKT



782-2C-SKT



783-3C-SKT



784-4C-SKT-1

Relay Sockets 78 Series				
Part Number	Price	Description	Drawing Link	Agency Approval
<u>781-1C-SKT</u>	\$4.50	AutomationDirect relay socket, 35mm DIN rail or panel mount. For use with 781 series cube relays.	PDF	UL Recognized file number: E225080
<u>782-2C-SKT</u>	\$4.50	AutomationDirect relay socket, 35mm DIN rail or panel mount. For use with 782 and AD-70S2 series cube relays.	PDF	
<u>783-3C-SKT</u>	\$5.00	AutomationDirect relay socket, 35mm DIN rail or panel mount. For use with 783 series cube relays.	PDF	
<u>784-4C-SKT-1</u>	\$5.25	AutomationDirect relay socket, 35mm DIN rail or panel mount. For use with 784 series cube relays.	PDF	

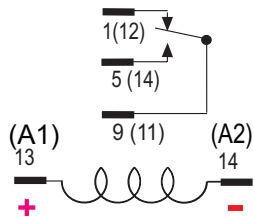
Relay Sockets 78 Series Screw Torques and Wire Sizes		
Part Number	Maximum Screw Torques	Maximum Wire Sizes
<u>781-1C-SKT</u>	Terminals 13, 14: 7 in-lbs/0.8 N·m Terminals 1, 5, 9: 9 in-lbs/1.0 N·m	Terminals 13, 14: 18 to 20 AWG, solid or stranded, one or two identical wires Terminals 1, 5, 9: 12 to 20 AWG, solid or stranded, one or two identical wires
<u>782-2C-SKT</u>	All terminals: 9 in-lbs/1.0 N·m	All terminals: 12 to 20 AWG, solid or stranded, one or two identical wires
<u>783-3C-SKT</u>		
<u>784-4C-SKT-1</u>		

Note: Order sockets separately; holding clips are included with sockets.

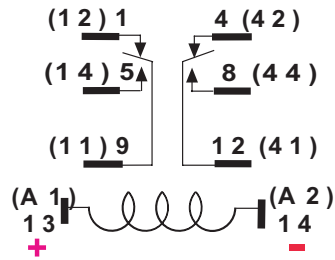
Wiring Diagrams 78 Series

Wiring Diagrams (viewed from pin end)

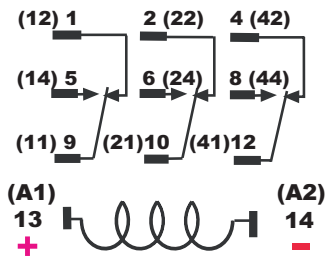
781-1C-XXX



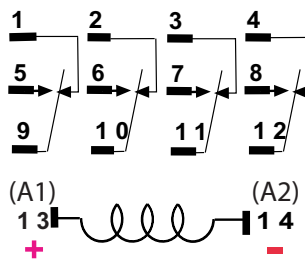
782-2C-XXX



783-3C-XXX



784-4C-XXX



*Note: ALTERNATE NEMA OR IEC () NUMBERS, VIEWED FROM PIN SIDE