

# DL05: Super Powerful and Only \$99.00

Top eight reasons to choose a DL05 micro PLC for discrete control applications (and we've even added a little motion control!)

## What is it?

The DL05 is our least expensive PLC, but it's not short on features. For small I/O applications, the DL05 can do the job of some of our larger PLCs.

## What's it got?

- Eight inputs and six outputs (integrated)
- Six I/O models of AC, DC and relay I/O
- 2K program memory
- 4K data memory
- 129 instructions, including four PID loops
- Powerful functions like FOR/NEXT loops, subroutines, and drum sequencers
- Removable terminal block

## What discrete control can I perform with it?

- Control a small material positioning machine using built-in high-speed counting or pulse output I/O for cut-to-length, pick-and-place, speed monitoring, and more.
- Create a sequence controller using the drum instruction and discrete I/O for piece counting, sortation, stamping, filling, level control, and more.
- Build an events recorder using sensors and discrete I/O with the real-time clock option module installed.
- Use the 10-30 VDC-powered units in remote locations for data monitoring and control.

### 1 Super low prices, starting at \$99.00

The DL05 micro PLC offers incredible features at a disposable price.

### 2 Practical communications

Two RS-232 serial communication ports are included on all models.

This allows connectivity to an operator interface and networking with an AC drive or another PLC at the same time. The DL05 also supports industry standard Modbus RTU protocol (both master and slave on Port 2 up to 38.4K baud). Or, if you need additional ports, check out the D0-DCM module with connection speed up to 115.2 Kbps.

### 3 Simple high-speed counting or pulse output built in (on specific models)

The DL05 includes built-in configurable high-speed I/O. There's no need to purchase a separate motion controller or programmable limit switch (PLS) if your application only includes one simple motion requirement. For motion control on a budget, consider one of these options already included in the DL05:

- 5 kHz max. inputs for two up-only counters or one quadrature encoder
- One external interrupt input or pulse catch input (minimum pulse width 100 µSec)
- One 7 kHz maximum pulse output (step and direction or clockwise and counter clockwise pulse outputs selectable)

**\$195.00**



Two built-in RS-232 serial communication ports. Port 2 configurable up to 38.4K baud and supports master/slave on DirectNET and Modbus RTU.

FA-ISOCOM



Modbus RTU master/slave communication to GS1 AC drive

### 4 Easy connection to ZIPLink modules

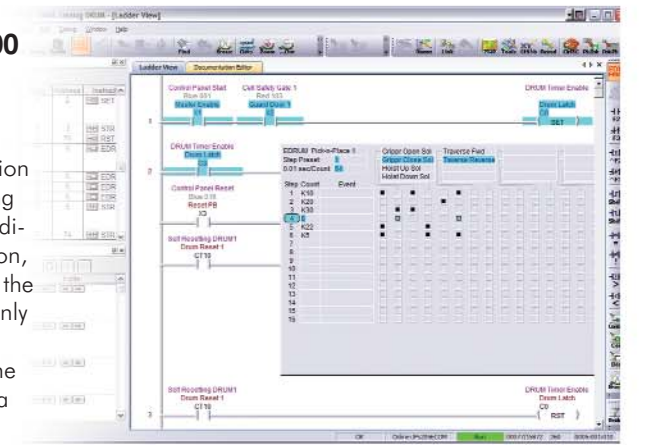
The 16-point option modules can connect to a variety of ZIPLink modules, including the low-cost feedthrough terminals, optional fuse, LED and even ZIPLink relay modules. The powerful 10 amp ZIPLink relay system will allow a DL05 to connect to high-current loads like contactors, solenoids and hydraulic valves.

(See ZIPLink section for our "five-second wiring solution.")

ZIPLink feed-through module ZL-CM056 (\$22.00), feed-through cable ZL-CBL056 (\$23.00)

### FREE Software - PC-DS100 Simple programming for your applications

5 Our DirectSOFT (version 5.0) PLC programming software offers our traditional full package version, which will program every CPU in the DirectLOGIC series of PLCs for only \$395.00. The free PC-DS100 package has all the features of the full package, but restricts you to a 100-word program download. Many of our DL05, DL105 and DL06 customers are taking advantage of this free programming software with all of its new enhancements, like IBox instructions, configurable tool bars, dockable and floatable windows and more.



### 6 Memory cartridge/real-time clock for only \$49.00

Install our D0-01MC into the option module slot and enable the DL05 for event scheduling or data logging applications. The D0-01MC also protects data during extended power removal with its on-board battery. Integrated upload and download buttons allow quick loading of a CPU program without the need for software.



### 7 Expansion I/O using option modules

Add up to 16 more discrete I/O points by installing an option module. Choose from 12 different discrete modules, including DC in, AC in DC out, DC in/out, and relay out, starting at only \$39.00.



D0-10ND3 10-pt. DC In .....	\$49.00	D0-07CDR 4-pt. DC In/3pt Relay Out ..	\$55.00
D0-10TD1 10-pt. DC Out .....	\$52.00	D0-08TR 8-pt. Relay Out .....	\$55.00
D0-10ND3F 10-pt. Fast Response .....	\$55.00	F0-04TRS 4-pt. Isolated Relay .....	\$39.00
F0-08NA-1 8-pt. AC In .....	\$47.00	D0-16ND3 16-pt. DC In .....	\$51.00
D0-10TD2 10-pt. DC Out .....	\$52.00	D0-16TD1 16-pt. DC Out .....	\$54.00
D0-08CDD1 4-pt. DC In/4pt DC Out ..	\$55.00	D0-16TD2 16-pt. DC Out .....	\$54.00
F0-08SIM Simulator .....	\$35.00		

### 8 Connectivity to the most popular networks

For as little as \$79.00, implement advanced networking solutions for the DL05 with our DeviceNet Slave Module, Ethernet Communications Module (10 or 100 Mbit), or our PROFIBUS Slave Communications Module. The new D0-DCM module supports DirectNet and Modbus (slave) protocols.



Modbus DeviceNet Ethernet PROFIBUS (Modbus TCP)