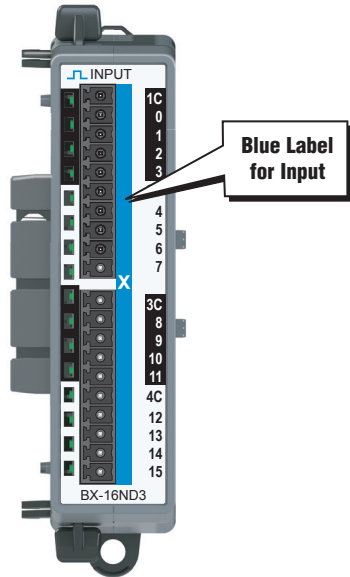


BRX Discrete Expansion Modules

Discrete Input Modules

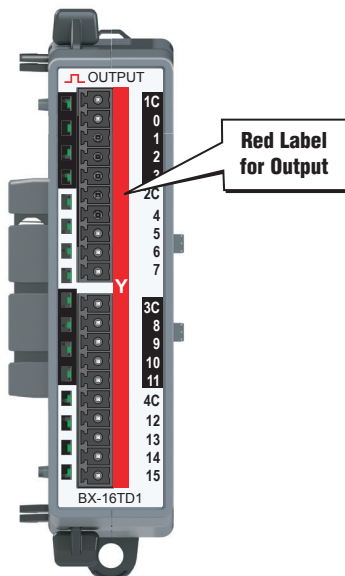
Ten (10) discrete input modules are available in various DC and AC voltage ranges. Input module faceplates have a blue terminal bar and symbol \sqcup for easy distinction from other module types.



Discrete Input Modules			
Part Number	Points	Input Type	Price
<i>BX-08NF3</i>	8	3 – 5 VDC Sink / Source	\$38.00
<i>BX-08ND3</i>		12 – 24 VDC Sink / Source	\$38.00
<i>BX-08NB</i>		24VAC	\$36.00
<i>BX-08NA</i>		120VAC	\$38.00
<i>BX-12ND3</i>	12	12 – 24 VDC Sink / Source	\$42.00
<i>BX-12NB</i>		24VAC	\$37.00
<i>BX-12NA</i>		120VAC	\$48.00
<i>BX-16ND3</i>	16	12 – 24 VDC Sink / Source	\$48.00
<i>BX-16NB</i>		24VAC	\$46.00
<i>BX-16NA</i>		120VAC	\$60.00

Discrete Output Modules

Twelve (12) discrete output modules are available in DC sinking, DC sourcing AC voltage and Relay type outputs. Output module faceplates have a red terminal bar and symbol \sqcup for easy distinction from other module types.

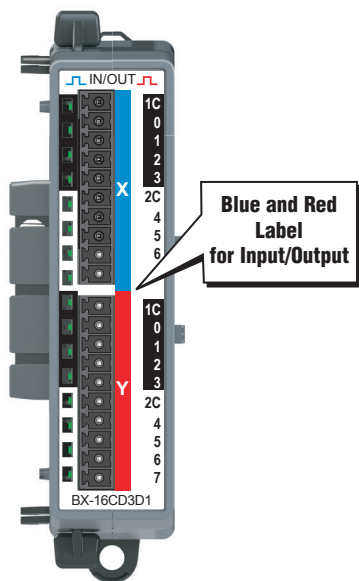


Discrete Output Modules			
Part Number	Points	Output Type	Price
<i>BX-05TRS</i>	5	Relay Form C (SPDT)	\$48.00
<i>BX-08TD1</i>	8	12 – 24 VDC Sinking	\$45.00
<i>BX-08TD2</i>		12 – 24 VDC Sourcing	\$45.00
<i>BX-08TR</i>		Relay Form A (SPST)	\$49.00
<i>BX-08TA</i>		120 – 240 VAC Triac	\$79.00
<i>BX-12TD1</i>	12	12 – 24 VDC Sinking	\$59.00
<i>BX-12TD2</i>		12 – 24 VDC Sourcing	\$59.00
<i>BX-12TR</i>		Relay Form A (SPST)	\$59.00
<i>BX-12TA</i>		120 – 240 VAC Triac	\$93.00
<i>BX-16TD1</i>	16	12 – 24 VDC Sinking	\$72.00
<i>BX-16TD2</i>		12 – 24 VDC Sourcing	\$72.00
<i>BX-16TR</i>		Relay Form A (SPST)	\$73.00

BRX Discrete Expansion Modules

Discrete Combo Input / Output Modules

Five discrete input/output combo modules are available with DC sink/source inputs and sink/source/relay outputs. The Input/Output faceplate terminal bar is in blue and red, making it easy to distinguish between inputs and outputs and from other module types.



Discrete Combo Input / Output Modules					
Part Number	Points		Input Type	Output Type	Price
	Input	Output			
<i>BX-08CD3R</i>	4	4	12–24 VDC Sink / Source	Relay Form A (SPST)	\$51.00
<i>BX-12CD3D1</i>	8	4		12–24 VDC Sinking	\$49.00
<i>BX-12CD3D2</i>				12–24 VDC Sourcing	\$49.00
<i>BX-16CD3D1</i>	8	8		12–24 VDC Sinking	\$61.00
<i>BX-16CD3D2</i>				12–24 VDC Sourcing	\$61.00

BRX Wiring Termination Options

Terminal Block Connectors

The terminal block connectors are provided in kits of multiple connectors that are easily ordered as a single part number. There are 2 different types of kits to choose from; one kit for the five (5),

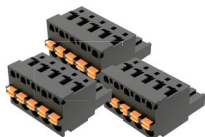
eight (8) and 12-point modules, and one kit for the 16-point modules. The five (5), eight (8) and 12-point module kits include (3) 5-pin 5mm connectors. The 8-point modules will use only 2 of

the 5-pin connectors, one (1) will not be used. The five (5) and 12-point modules will use all three connectors. The 16-point module kits include (2) 10-pin 3.81 mm connectors.

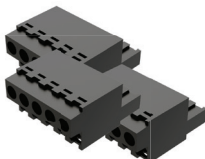
Terminal Block Connectors, 5, 8 and 12-Point Modules



BX-RTB08 Kit



BX-RTB08-1 Kit

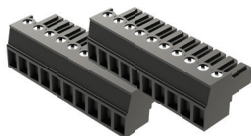


BX-RTB08-2 Kit

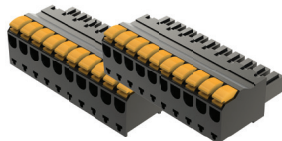
Terminal Block Specifications 5-, 8- & 12-point Type

Part Number	BX-RTB08	BX-RTB08-1	BX-RTB08-2
Price	\$8.00	\$8.00	\$8.00
Connector Type	Screw Type - 90-degree	Spring Clamp Type - 180-degree	Screw Type - 180-degree
Wire Exit	180-degree	180-degree	180-degree
Pitch	5.0 mm	5.0 mm	5.0 mm
Screw Size	M2.5	N/A	M2.5
Screw Torque Recommended	< 3.98 lb-in (0.45 N·m)	N/A	< 3.98 lb-in (0.45 N·m)
Screwdriver Blade Width	3.5 mm	3.5 mm	3.5 mm
Wire Gauge (Single Wire)	28–12 AWG	28–14 AWG	28–12 AWG
Wire Gauge (Dual Wire)	28–16 AWG	28–16 AWG (Dual Wire Ferrule Required)	28–16 AWG
Wire Strip Length	0.3 in (7.5 mm)	0.37 in (9.5 mm)	0.3 in (7.5 mm)
Equiv. Dinkle P/N	5ESDV-05P-BK	5ESDSR-05P-BK	5ESDF-05P-BK

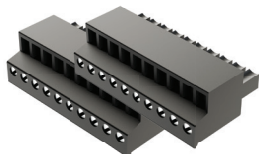
Terminal Block Connectors, 16-Point Modules



BX-RTB10 Kit



BX-RTB10-1 Kit



BX-RTB10-2 Kit

Terminal Block Specifications 16-point Type

Part Number	BX-RTB10	BX-RTB10-1	BX-RTB10-2
Price	\$12.00	\$12.00	\$12.00
Connector Type	Screw Type 90-degree	Spring Clamp Type 180-degree	Screw Type 180-degree
Wire Exit	180-degree	180-degree	180-degree
Pitch	3.81 mm	3.81 mm	3.81 mm
Screw Size	M2	N/A	M2
Screw Torque Recommended	<1.77 lb-in (0.2 N·m)	N/A	<1.77 lb-in (0.2 N·m)
Screwdriver Blade Width	2.5 mm	2.5 mm	2.5 mm
Wire Gauge (Single Wire)	28–16 AWG	26–18 AWG	30–16 AWG
Wire Gauge (Dual Wire)	28–18 AWG	30–20 AWG (Dual Wire Ferrule Required)	30–18 AWG
Wire Strip Length	0.24 in (6mm)	0.35 in (9mm)	0.26 in (6.5 mm)
Equiv. Dinkle P/N	EC381V-10P-BK	ESC381V-10-BK	EC381F-10P-BK

BRX Wiring Termination Options

ZIPLink Wiring System

BRX digital expansion modules can be quickly connected to convenient **ZIPLink** remote terminal blocks for ease of wiring remote I/O devices. Your **ZIPLink** selection is dependent on the number of expansion module terminal points. The following tables list the connector options.



8-Point BRX Digital Expansion Module ZIPLink Selector

Expansion Module Part No.	Price	ZIPLink Module	ZIPLink Module Part No.	Qty Needed	ZIPLink Cable Part No. *	Qty Needed
BX-08ND3	\$38.00	Feedthrough	ZL-RTB20, (standard) -OR- ZL-RTB20-1 (compact)	1	ZL-BXEM-CBL10	1
BX-08NF3	\$38.00					
BX-08NA	\$38.00					
BX-08NB	\$36.00					
BX-08TD1	\$45.00					
BX-08TD2	\$45.00					
BX-08TR	\$49.00					
BX-08TA	\$79.00					
BX-08CD3R	\$51.00					

*Select cable length: Blank = 0.5 m, -1 = 1.0m or -2 = 2.0m. 'P' extension is for pigtail cable.

12 & 5-Point BRX Digital Expansion Module ZIPLink Selector

Expansion Module Part No.	Price	ZIPLink Module	ZIPLink Module Part No.	Qty Needed	ZIPLink Cable Part No. *	Qty Needed
BX-12ND3	\$42.00	Feedthrough	ZL-RTB20, (standard) -OR- ZL-RTB20-1 (compact)	1	ZL-BXEM-CBL15	1
BX-12NA	\$48.00					
BX-12NB	\$37.00					
BX-12TD1	\$59.00					
BX-12TD2	\$59.00					
BX-12TR	\$59.00					
BX-05TRS	\$48.00					
BX-12TA	\$93.00					
BX-12CD3D1	\$49.00					
BX-12CD3D2	\$49.00					

*Select cable length: Blank = 0.5 m, -1 = 1.0m or -2 = 2.0m. 'P' extension is for pigtail cable.

16-Point BRX Digital Expansion Module ZIPLink Selector

Expansion Module Part No.	Price	ZIPLink Module	ZIPLink Module Part No.	Qty Needed	ZIPLink Cable Part No. *	Qty Needed
BX-16ND3	\$48.00	Feedthrough	ZL-RTB20, (standard) -OR- ZL-RTB20-1 (compact)	1	ZL-BXEM-CBL20	1
BX-16NA	\$60.00					
BX-16NB	\$46.00					
BX-16TD1	\$72.00					
BX-16TD2	\$72.00					
BX-16TR	\$73.00					
BX-16CD3D1	\$61.00					
BX-16CD3D2	\$61.00					

*Select cable length: Blank = 0.5 m, -1 = 1.0m or -2 = 2.0m. 'P' extension is for pigtail cable.