

# DL205 WinPLC - Great Fit For Control With Advanced Data Handling and Versatile Connectivity



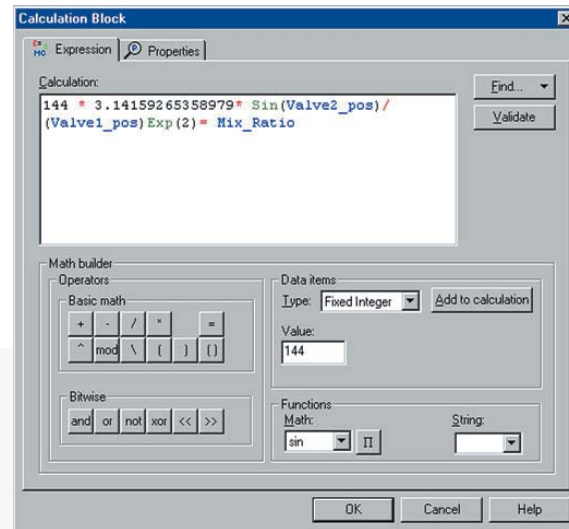
## What is a WinPLC ?

The WinPLC is a hybrid PC-PLC solution that brings the best of the PLC and the PC Control worlds together. The WinPLC module fits into the CPU slot of the popular DL205 series PLC. The WinPLC offers both deterministic control and connectivity to control devices and business systems. With the WinPLC, you'll benefit from:

- PLC reliability
  - Diskless operation
  - Non-volatile program and data memories
  - Direct backplane access to I/O
- Microsoft Windows connectivity
- PC-Style Data Management Tools
- 4 MB ROM/2 MB RAM or 8 MB ROM/8 MB RAM models

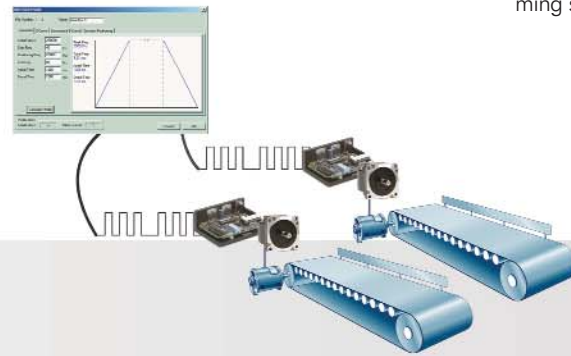
## Advanced data handling

Think & Do software handles advanced math functions, formulas, string data and array manipulation in simple, plain-language format. Think & Do gives you the power and flexibility of custom programming for math and data management in the same development environment as the control logic. No complex RLL or PLC coprocessor required! Save time and money both developing and maintaining your applications with Think & Do's powerful data tools. Just "fill in the blanks" for most data operations, including up to 64 PID loops.



## High performance counting module with pulse output

Our high-speed counter module (H2-CTRIO), at \$289.00, has four independently configurable timer/counter channels (up to 100 kHz) and two pulse output generators (up to 25 kHz). The easy-to-use configuration tool is included. For more details, see the H2-CTRIO pages in this section.



the software catalog section.

## Advanced programming environment

Develop your project with the leader in PC control software, using Think & Do Live! or Think & Do Studio. Enjoy the powerful features of Think & Do to develop applications for the WinPLC. See the PC Control in the Software section of this catalog for details on Think & Do's intuitive flowchart programming software.

| WinPLC CPU Modules                              |                   |                   |
|---|-------------------|-------------------|
| For both Think & Do Studio and Think & Do Live! |                   |                   |
| WPLC  | Memory            | Prices            |
| H2-WPLC2-EN                                     | 4 MB ROM/2 MB RAM | \$789.00 (100MHz) |
| H2-WPLC3-EN                                     | 8 MB ROM/8 MB RAM | \$789.00 (100MHz) |

For qualified OEMs or software developers, the WinPLC comes in a CE-only version for VisualBasic and C++ programmers developing custom code. If you are interested in the CE-only version, visit [www.hosteng.com](http://www.hosteng.com) for details.

## Why is the WinPLC a great fit for data handling and connectivity?

If your application requires complex math, data manipulation (even string arrays) or integrated connectivity as well as I/O control, a WinPLC is the best solution. Check out the top reasons why the DL205 WinPLC is a great fit for these types of applications.

## Built-in and expansion serial ports

With one native port and up to three 3-port serial modules (H2-SERIO for only \$175.00), a WinPLC can handle up to 10 serial ports. Try that with a traditional PLC!! There isn't a better way to combine serial data with I/O control. Unlike most RLL programming, the Think & Do PC control software is designed for easy communication programming and string data manipulation.



Up to 10 serial ports



Connect to our C-more or C-more micro operator panels

Connect to our Industrial Modem

## PLC-style I/O

A WinPLC can use any of the standard DL205 discrete and analog I/O modules, up to 256 I/O in the local base, and more when using the H2-ERM to master an additional base. Modules in the local base allow the WinPLC direct backplane access to those I/O.

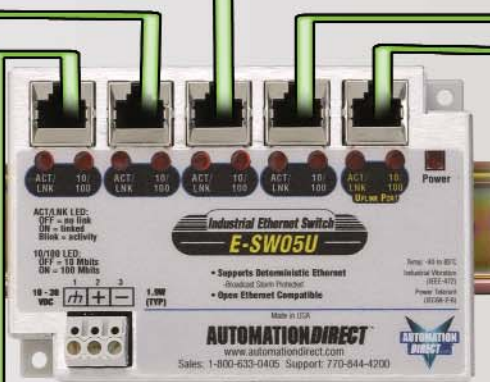
## Built-in standard Ethernet connectivity

The WinPLC has an integrated 10 MB Ethernet port. Use OPC or DDE to link WinPLC's with an HMI or other application. Or, share tags with any PC or WinPLC running Think & Do software. WinPLCs are compatible with the new DataWorx data acquisition software. See

Up to business LAN (Network traffic from business LAN restricted by managed switch)

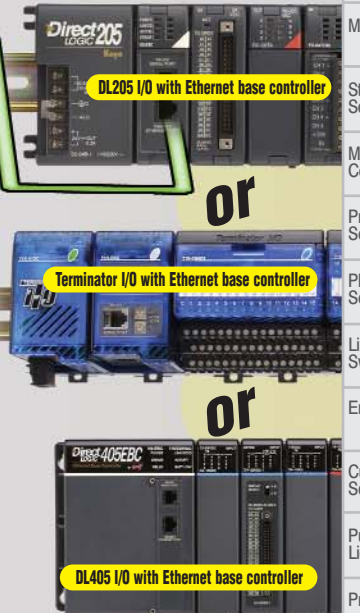


AutomationDirect's Industrial Ethernet Switch (E-SW05U) for reliable, deterministic communications in industrial environments for only \$260.00.



## Distributed I/O

Control an expansion base of I/O with an H2-ERM (Ethernet Remote Master) in the local base connected to Ethernet Base Controllers (EBC), for slave I/O in your choice of DL205, DL405 or Terminator I/O.



|                    |
|--------------------|
| PLC Overview       |
| DL05/06 PLC        |
| DL105 PLC          |
| <b>DL205 PLC</b>   |
| DL305 PLC          |
| DL405 PLC          |
| Field I/O          |
| Software           |
| C-more HMIs        |
| Other HMI          |
| AC Drives          |
| Motors             |
| Steppers/Servos    |
| Motor Controls     |
| Proximity Sensors  |
| Photo Sensors      |
| Limit Switches     |
| Encoders           |
| Current Sensors    |
| Pushbuttons/Lights |
| Process            |
| Relays/Timers      |
| Comm.              |
| TB's & Wiring      |
| Power              |
| Circuit Protection |
| Enclosures         |
| Appendix           |
| Part Index         |