

# DL205: 11 Reasons Why This Is The Most Practical PLC Money Can Buy!

## 1 2-for-1 prices

Check out our prices on everything from I/O modules to CPUs and you'll see that our everyday list prices are among the lowest in the industry. For instance, you can buy two of our D2-260 systems for the price of one of Allen-Bradley's CompactLogix CPUs. Will that help your budget?

## 2 Practical built-in communication includes easy-to-use ASCII instructions

Our D2-260 CPU, priced at \$299.00, offers two built-in communication ports. The top port supports programming and operator interfaces. The bottom port supports the same, as well as ASCII input and output (bar code readers, label printers, scales, servo drives), Modbus RTU master/slave, and Remote I/O master. All that just in the CPU!

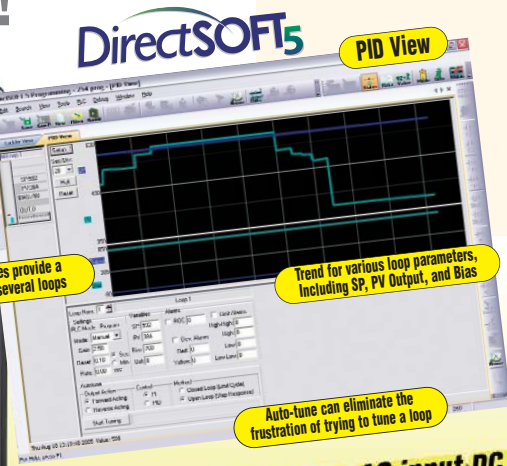
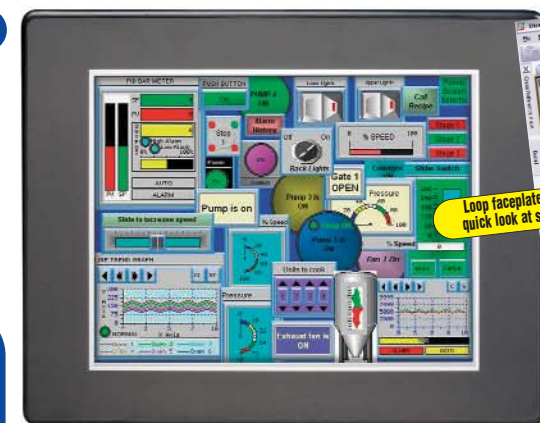
## 3 Practical communication

Many communication modules are available for DL205 PLCs, including Ethernet, DeviceNet, Profibus, and a general purpose serial communication module that supports HMI's, programming, operator panels, Modbus RTU slave and DirectNET slave.

**CHECK OUT OUR PRICES**

PLC CPUs	AutomationDirect DL205 D2-260	US	Allen-Bradley SLC 5/03 L531 1747-L531 (5/03)
Local addressing	1280	🟢	960
Memory (words)	15.8K (program)	🟢	8K (program)
Built-in comm ports	2	🟢	2
ASCII In/out	Yes	🟢	Yes
Real-time clock/calendar	Yes	🟢	Yes
Removable memory	No	🔴	Yes
Floating-point math	Yes	🟢	Yes
PID Loops	Yes	🟢	Yes
PID Fill-in-the-blank	Yes	🟢	Ladder
Loop scheduling	Yes	🟢	No
Auto loop tune	Yes	🟢	No
List Price	\$299	🟢	\$944

\*AutomationDirect prices are from October 2007 Price List. Allen-Bradley prices taken from http://shoprockwellautomation.com 7/20/07. Technical data from SLC500 Chassis-Based Processors Product Data Publication 1747-2.39, November 2000



**D2-260 CPU**  
Communicate to ASCII devices from the bottom CPU port

## 4 Practical counting/pulse

At \$289.00, our high-speed counter module (H2-CTRIO) has four independently configurable timer/counter channels (up to 100 kHz) and two pulse output generators (up to 25 kHz). The easy-to-use configuration tool is included in our PLC programming software, so it's a snap to integrate with your other application logic. For counting on a shoestring budget, the \$85.00 D2-CTRINT module offers two 5 kHz counters, one up/down counter, or a variable pulse train output.

See Software section for detailed features and specifications

## 5 \$395.00 programming software includes auto-tune PID

Program the DL205 family of PLCs with DirectSOFT5. Customers tell us that it's one of the easiest PLC programming packages to use!

- Point and click or function key editing
- Can use nicknames or data points for writing programs
- I/O cross reference and element usage windows for keeping track of addresses used

The D2-260 CPU has over 280 instructions, including:

- New IBox pre-programmed function blocks
- Floating-point math
- Time and event-based drum sequencers
- ASCII input or output
- Timed and hardware triggered subroutines

**Ethernet**  
to other control systems and business systems networks

## 6 Expansion I/O

In addition to remote I/O and Ethernet remote I/O, the DL205 family supports local expansion I/O! Up to four DL205 bases can be connected (30 meters total) to a local base that contains a D2-260 CPU (two expansion bases with a D2-250-1 CPU). With expansion I/O, all bases are updated synchronously with each I/O scan for a deterministic system.

## DirectSOFT5 Auto-tune PID

Some of the traditional PLC companies require a separate ladder program for each PID loop and for loop scheduling. We make it automatic. Get up and running faster!

- Fill out a chart for alarms and ramp/soak
- Automatic loop scheduling
- Programming software includes the loop tune screen with trending (shown to the left)
- Loop auto-tuning, which allows the CPU to automatically determine the near-optimum loop settings

## 7 Super flexible coprocessor module

Create custom BASIC programs to interface to barcode readers, VF drives or other intelligent ASCII devices. The module comes with 128K memory, 26 MHz CPU and three independent communication ports.

## 8 Practical low-cost analog

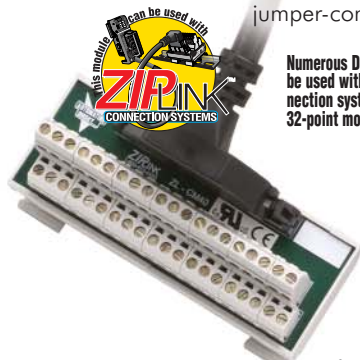
Do you need up to 16-bit resolution, up to eight channels of input or output, combination, RTD or thermocouple modules? We've got it all! And many of our modules have selectable unipolar or bipolar voltage range options (0-5V, 0-10V, ±5V or ±10V) too.

## 9 High current modules

We offer a wide range of high current relay modules that can support up to 10A per point.

## 10 Practical temperature sensing

The DL205 series features a four-channel thermocouple module (F2-04THM for \$299.00) that is jumper-configurable for the nine most popular thermocouple types, as well as four common voltage ranges.



Numerous DL205 modules can be used with our ZIPLink connection systems. Connect even 32-point modules in seconds!

## 11 Practical high-density modules and ZipLink connections

DL205 I/O modules offer a wide range of points per module including 4-pt., 8-pt., 12-pt., 16-pt. and 32-pt. modules. To help you wire them fast and inexpensively, we offer ZIPLink quick connection cables and terminal blocks that allow you to connect the PLC I/O modules to terminal blocks in seconds. These easily pay for themselves by reducing wiring costs. We also offer relay, fused and LED ZIPLink modules. For information on our 5-second wiring solution, see ZIPLinks in the Terminal Blocks and Wiring section.

- AutomationDirect
- PLC Overview
- DL05/06 PLC
- DL105 PLC
- DL205 PLC**
- DL305 PLC
- DL405 PLC
- Field I/O
- Software
- C-more HMI's
- Other HMI
- AC Drives
- Motors
- Steppers/Servos
- Motor Controls
- Proximity Sensors
- Photo Sensors
- Limit Switches
- Encoders
- Current Sensors
- Pushbuttons/Lights
- Process
- Relays/Timers
- Comm.
- TB's & Wiring
- Power
- Circuit Protection
- Enclosures
- Appendix
- Part Index