

# DL205 - Great Fit For Simple Data Acquisition and Supervisory Control

## Here's why

The DL205 PLC family, along with our other value packed products, gives you the components to build powerful and cost-effective data acquisition with supervisory control systems. These can range from a handful of I/O points to thousands of I/O points.

## 3-for-1 prices makes the DL205 the low price winner 1

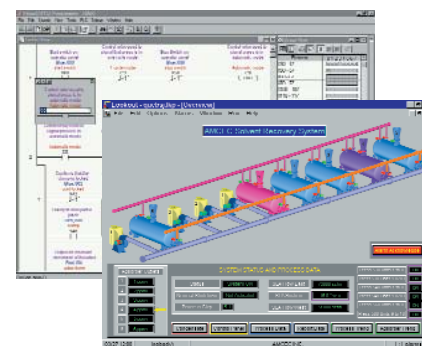
Data acquisition systems often require many data points to be collected. This may include dozens, hundreds or perhaps thousands of discrete, analog or temperature inputs. This type of system can be extremely expensive with traditional PLCs or SCADA (Supervisory Control and Data Acquisition) systems. Previous pages describe how you can often buy two or three DL205 I/O modules (discrete and analog) for the price of one module from some traditional suppliers. Add our new DataWorx data acquisition software and you can afford to do more when using AUTOMATIONDIRECT!

## High-speed, low-cost Ethernet connects I/O and VFDs 2

The DL205 supports a wide range of Ethernet-based products for connecting additional field I/O (our Terminator I/O, DL205 I/O, DL405 I/O) or even variable speed drives to your monitoring or control system! All of our Ethernet products are priced so you can take advantage of Ethernet for almost any application.

## Program our PLCs and touch panels over Ethernet 3

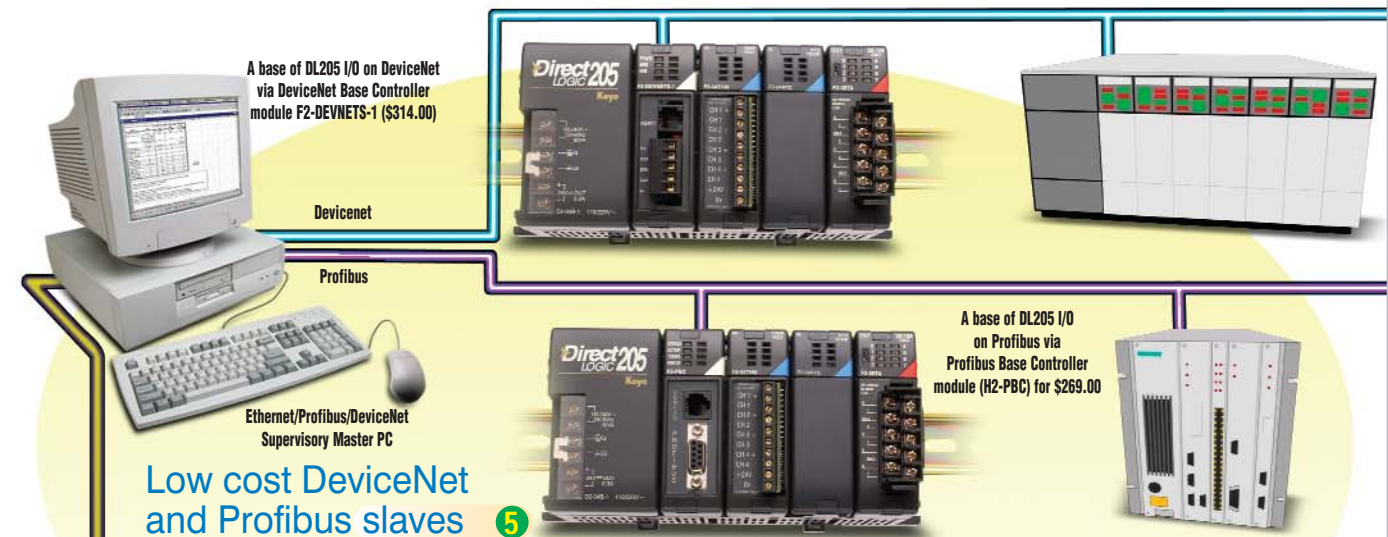
Our DL205, DL405 systems and C-more panels can be programmed over an Ethernet network with the same low cost software that you buy every day from AUTOMATIONDIRECT to program non-networked PLC systems and touch panels.



Directsoft RLL programming and PC-based HMI (such as LookoutDirect) over Ethernet to multiple PLCs

## High-speed Ethernet links PLC systems to a supervisory system 4

Use off-the-shelf Ethernet hubs to communicate between multiple PLCs (peer-to-peer between PLCs) and a supervisory system. You can also communicate among our PLCs that support Ethernet. We even offer a DIN-rail mount, industrial high-performance Ethernet hub/switch for very strict deterministic requirements. Now that's cost-effective distributed control!



## Low cost DeviceNet and Profibus slaves 5

Many I/O systems are required to support traditionally high-cost DeviceNet and Profibus networks. Now you can beat these often artificially inflated prices with one of our DeviceNet or Profibus slave modules in the CPU slot of a DL205 base. This allows you to attach our wide variety of low-cost I/O systems to new and existing DeviceNet and Profibus networks.

## Locate operator panels anywhere 6

Multiple serial communication ports available on our PLCs allow you to locate operator panels near the operator.

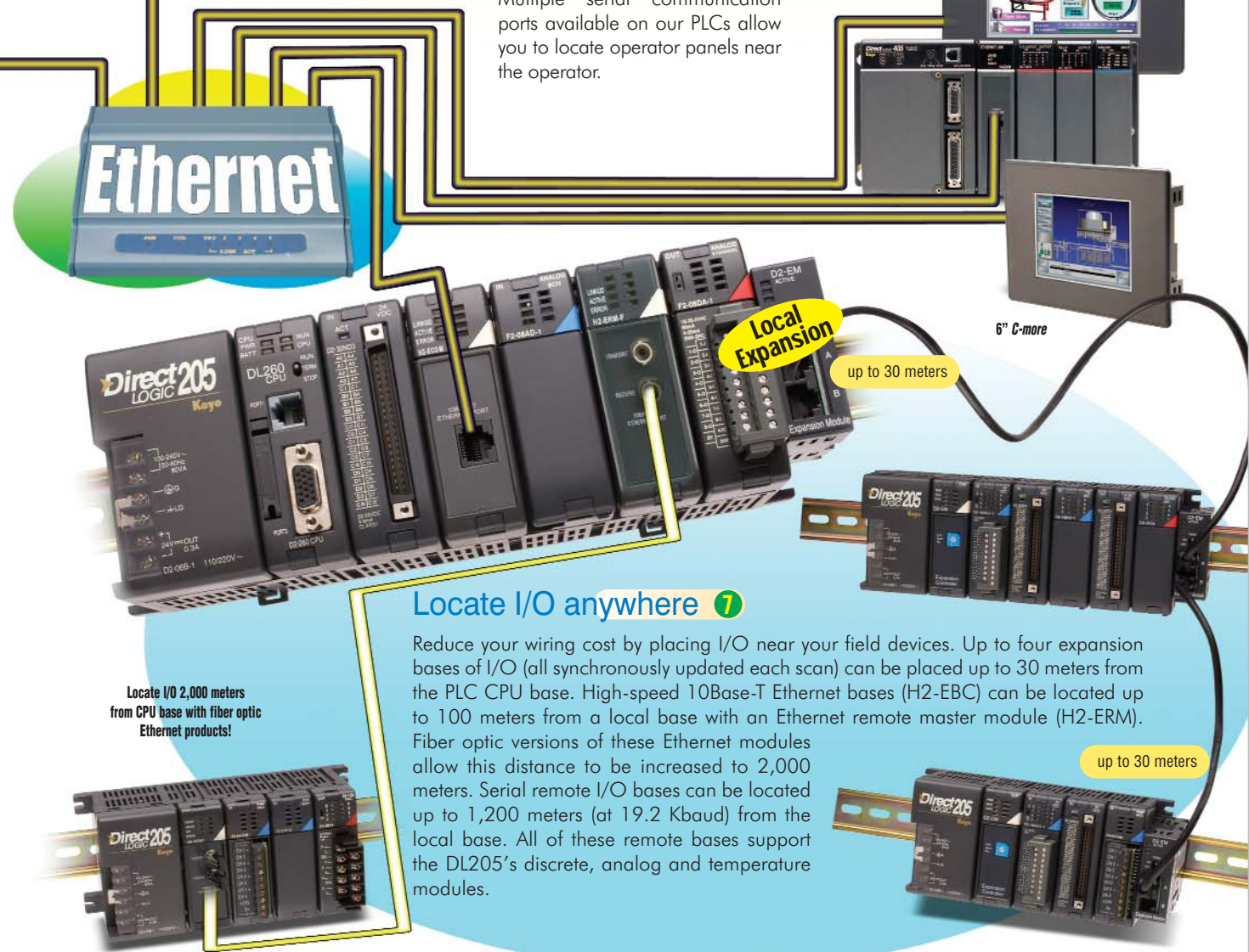


AutomationDirect industrial Ethernet hub/switch Part # E-SW05U \$260.00 (or use any off-the-shelf hub)



Connect our GS family of VFDs to a PLC via Ethernet

Ethernet interface GS-EDRV (\$200.00)



## Locate I/O anywhere 7

Reduce your wiring cost by placing I/O near your field devices. Up to four expansion bases of I/O (all synchronously updated each scan) can be placed up to 30 meters from the PLC CPU base. High-speed 10Base-T Ethernet bases (H2-EBC) can be located up to 100 meters from a local base with an Ethernet remote master module (H2-ERM). Fiber optic versions of these Ethernet modules allow this distance to be increased to 2,000 meters. Serial remote I/O bases can be located up to 1,200 meters (at 19.2 Kbaud) from the local base. All of these remote bases support the DL205's discrete, analog and temperature modules.



- PLC Overview
- DL05/06 PLC
- DL105 PLC
- DL205 PLC**
- DL305 PLC
- DL405 PLC
- Field I/O
- Software
- C-more HMIs
- Other HMI
- AC Drives
- Motors
- Steppers/Servos
- Motor Controls
- Proximity Sensors
- Photo Sensors
- Limit Switches
- Encoders
- Current Sensors
- Pushbuttons/Lights
- Process
- Relays/Timers
- Comm.
- TB's & Wiring
- Power
- Circuit Protection
- Enclosures
- Appendix
- Part Index